

# Model Consistency

Central Florida Coordination Area  
Tools Development Team Workshop  
July 29, 2010

*Presented by Mark Barcelo, P.E.; Program Director  
Southwest Florida Water Management District*

# Model Consistency

## Purpose:

- To show the ECFT model and DWRM produce reasonably similar results
  - conceptual framework
  - sources of water to wells
- To assess effects of withdrawals from adjacent model area

# Model Consistency

## Approach:

- Mass balance over common area
- Conduct simulations of hypothetical withdrawal(s) in common area
  - Compare changes in mass balance over defined area for base case and “new” withdrawal case

# CENTRAL FLORIDA COORDINATION AREA

## DWRM CFCA Model

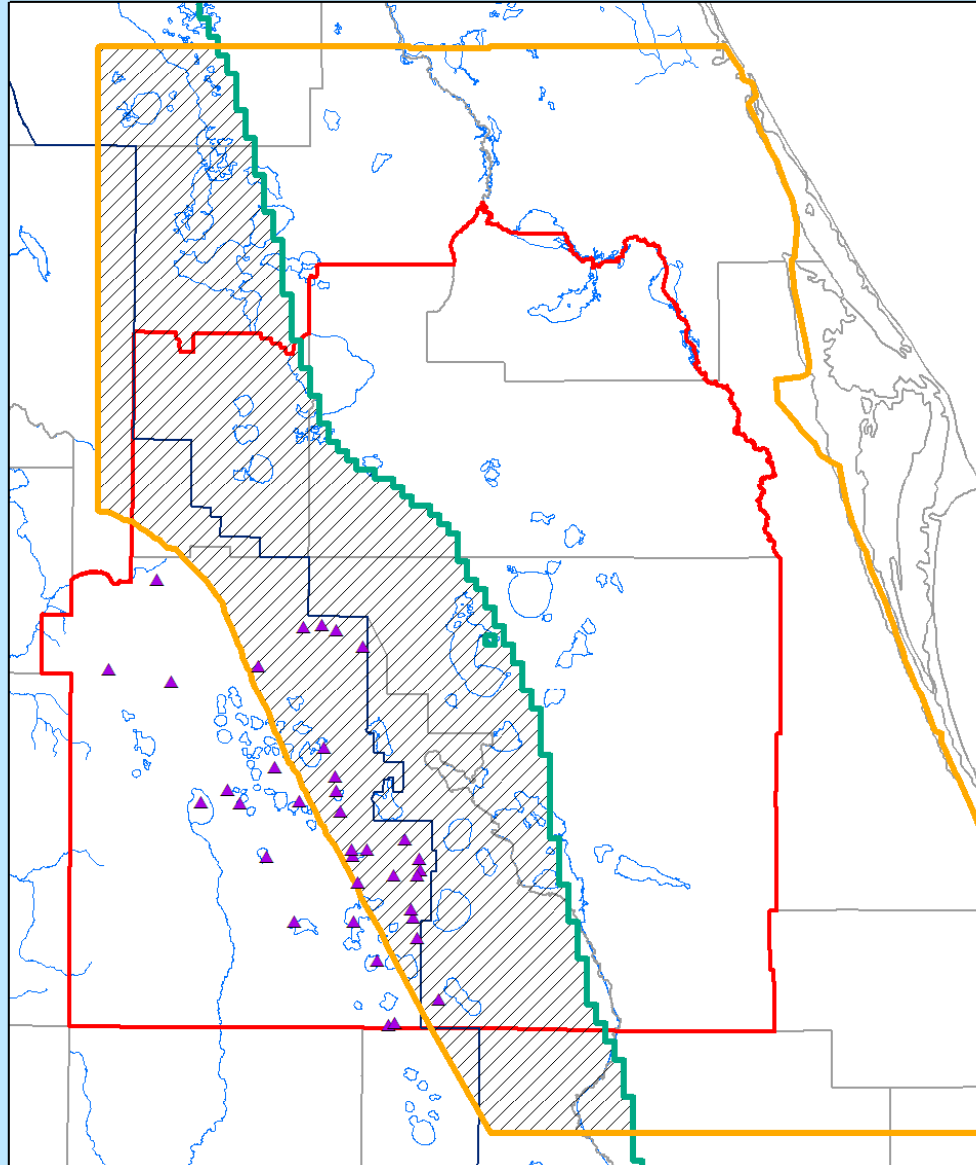
### DWRM and ECFT Area of Overlap

- ▲ CFCA Environmental Sites
- ▭ CFCA Boundary
- ▭ ECFT Active Area
- ▭ DWRM Active Area
- ▨ Model Overlap



0 5 10 20 Miles

Southwest Florida  
Water Management District



# CENTRAL FLORIDA COORDINATION AREA

## DWRM CFCA Model

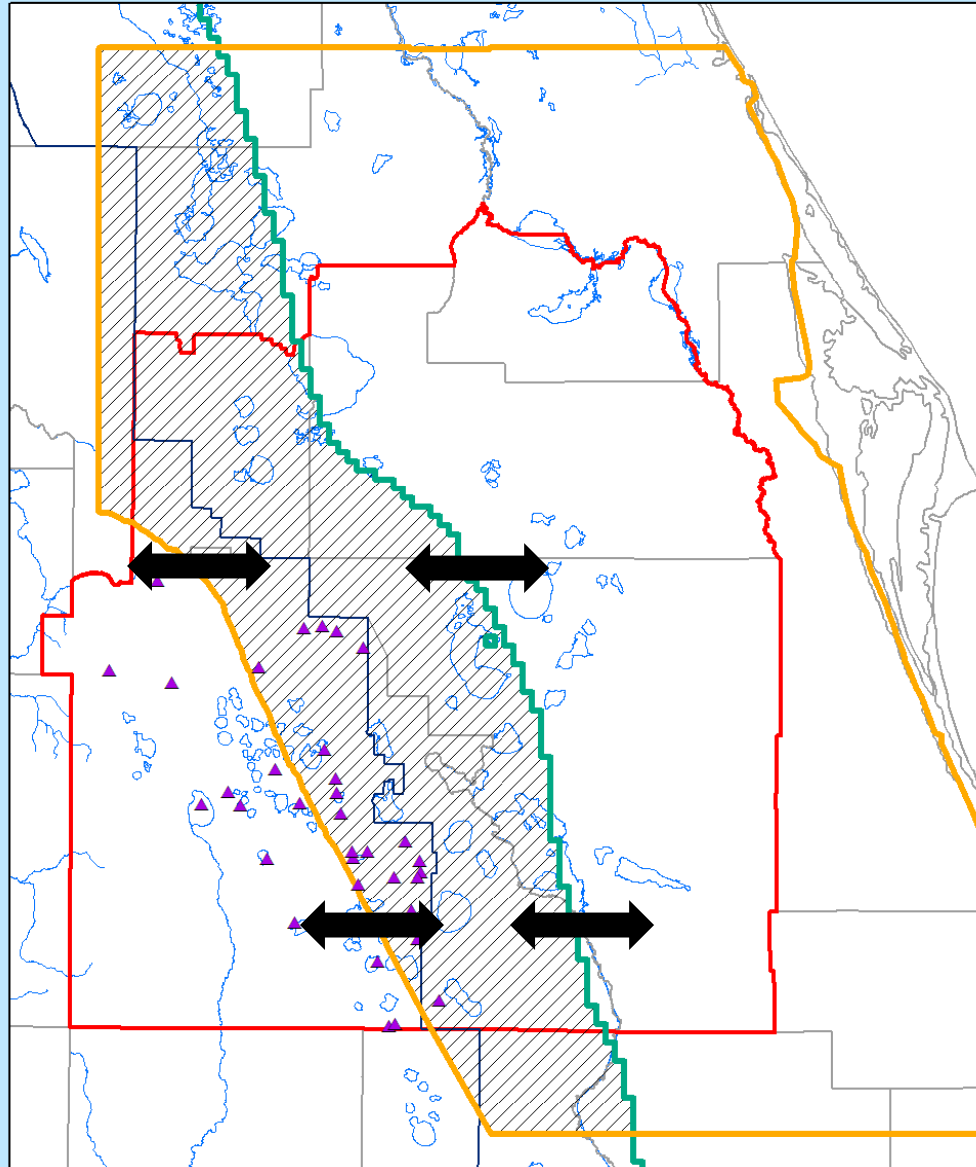
### DWRM and ECFT Area of Overlap

- ▲ CFCA Environmental Sites
- ▭ CFCA Boundary
- ▭ ECFT Active Area
- ▭ DWRM Active Area
- ▨ Model Overlap



0 5 10 20 Miles

Southwest Florida  
Water Management District





# CENTRAL FLORIDA COORDINATION AREA

## DWRM CFCA Model

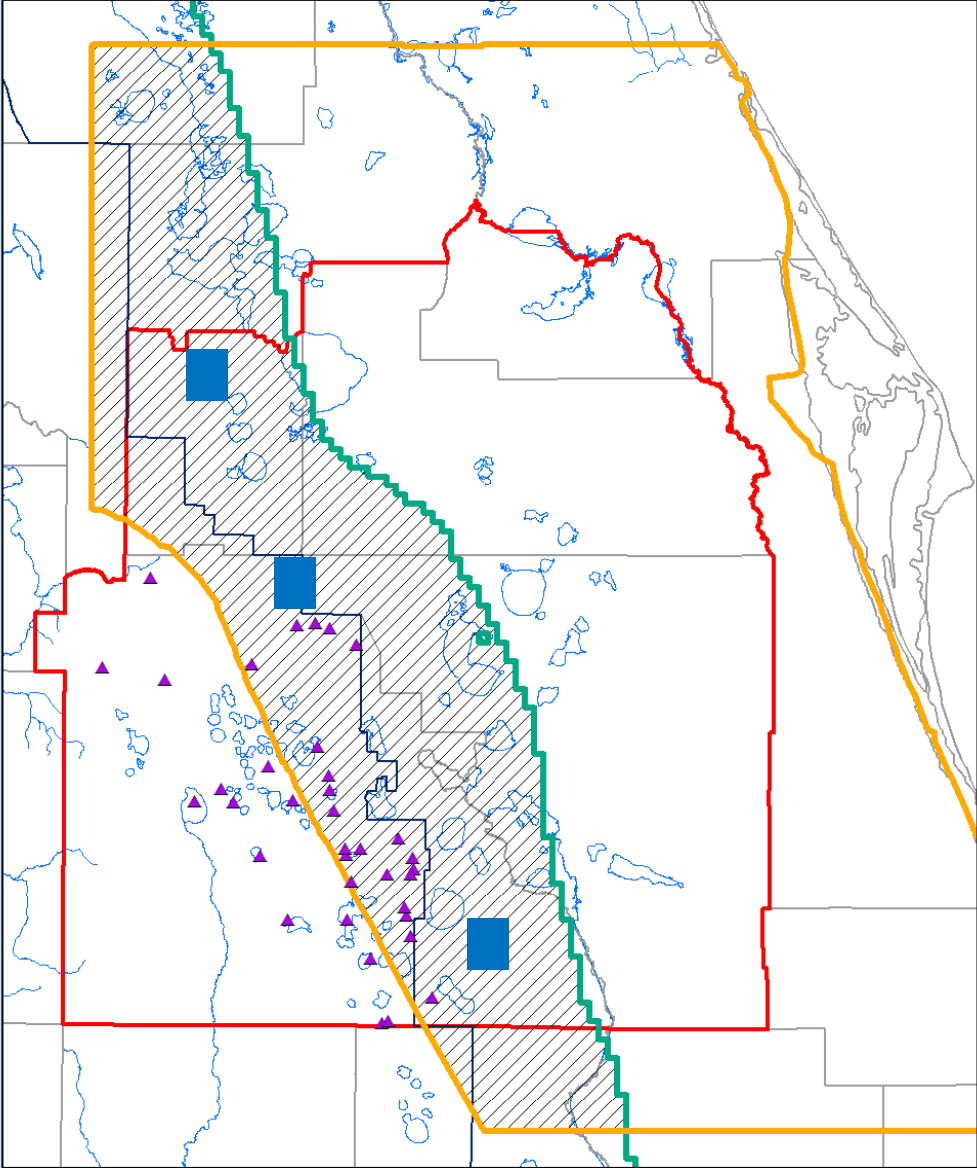
### DWRM and ECFT Area of Overlap

- ▲ CFCA Environmental Sites
- CFCA Boundary
- ECFT Active Area
- DWRM Active Area
- ▨ Model Overlap

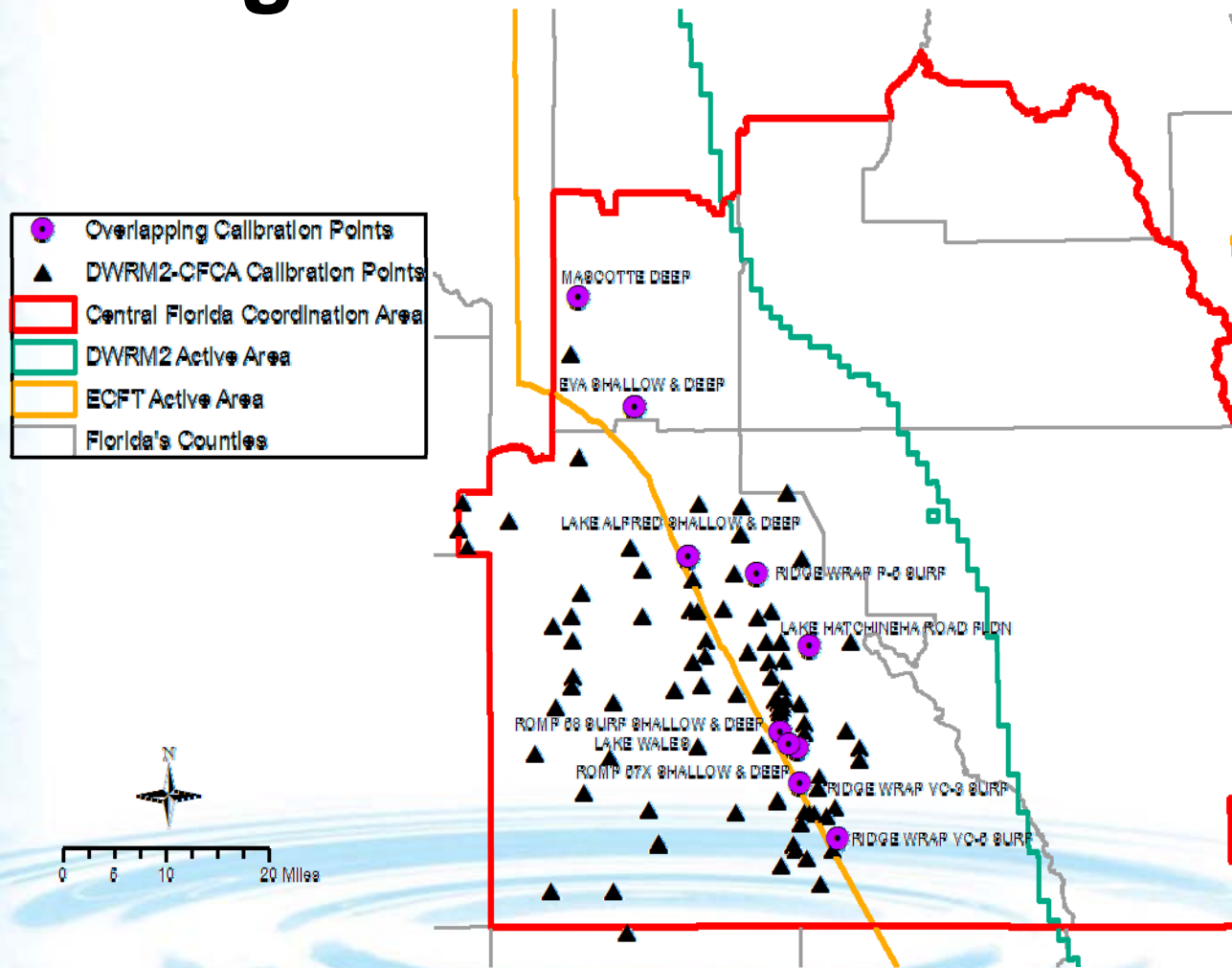


0 5 10 20 Miles

Southwest Florida  
Water Management District



# Compare Model Results at Monitoring Points in Common Area



CENTRAL FLORIDA COORDINATION AREA

