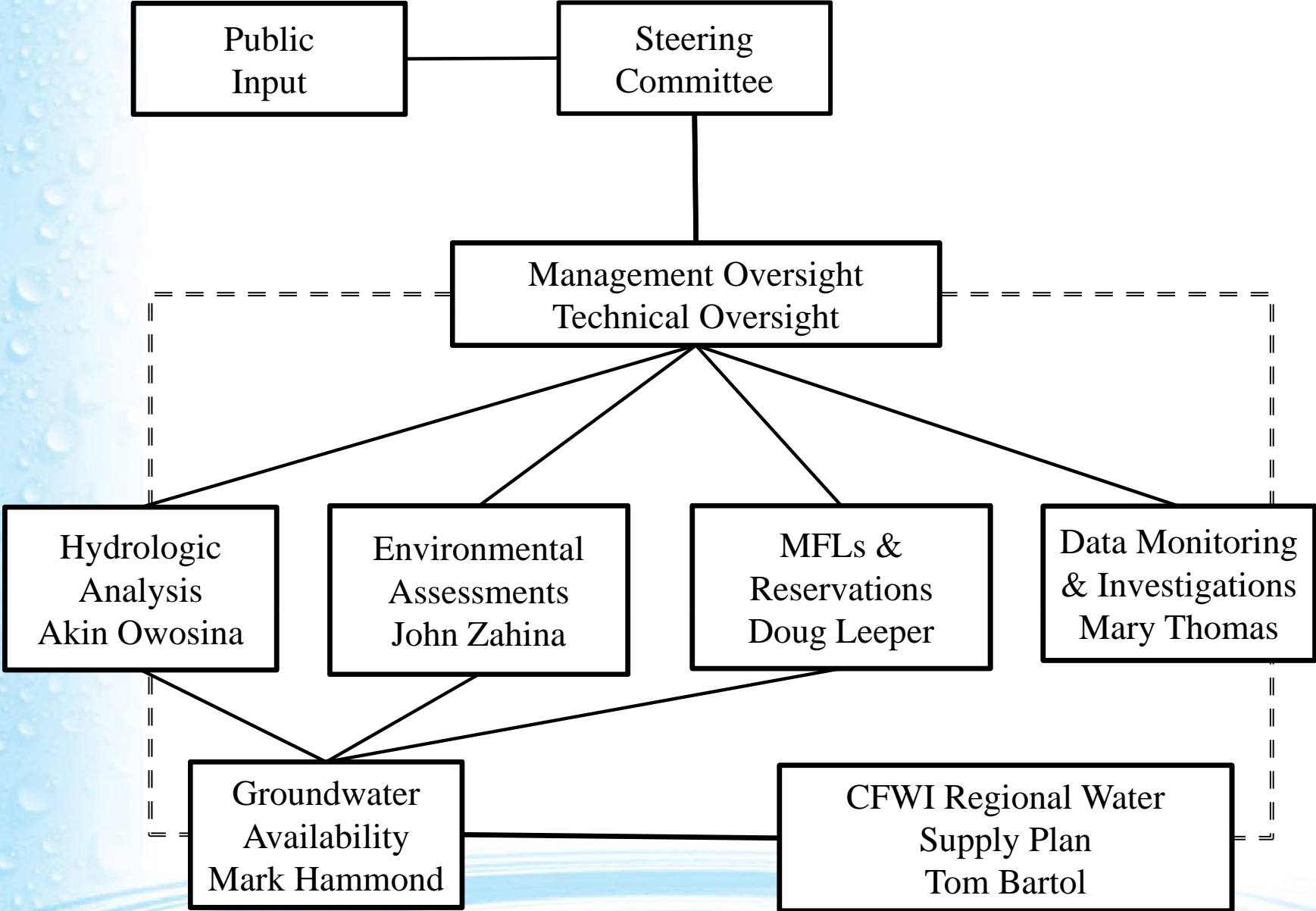


Central Florida Water Initiative



Steering Committee Scheduling Guidance



Central Florida Water Initiative

CFWI Guidance Document		Start	Complete	Remaining Days to Complete	Comments
Initiatives	Key Components				
Hydrologic Analysis (A)	Key Components Model Calibration (A1)	3/1/2011	9/30/2011	COMPLETED	Completed 11/23/2011
	Technology Transfer Protocol (A1B)	11/10/2011	12/30/2011	COMPLETED	Technology transfer memo finalized in Jan and reported to SC. Workshop held March 21 & 22
	Statistical Trends in Hydrologic Data (A2)	3/1/2011	2/28/2012	-70	Draft deliverable from consultants received and reviewed by HAT 2/28. Final revisions in March.
	USGS Project to Quantify Factors Affecting Groundwater and Lake Levels in the Central Florida Area (A3)	3/1/2011	6/30/2012	52	
	Initial Model Scenarios (A4)	3/1/2011	4/30/2012	-8	Schedule slipping; evaluating degree to which it will affect overall CFWI schedule
	Documentation (A5)	3/1/2011	5/30/2012	22	
Environmental Measures (B)	Evaluate current conditions (B1)	3/1/2011	3/31/2012	COMPLETED	Slightly behind but will not impact overall schedule; 4-6 weeks to finalize
	Supplemental data collection to strengthen statistical relationships found in B1 (B1, supplemental)	4/1/2012	6/1/2012	14	Additional data collection/analysis underway, 4-6 weeks to finalize. Will not impact overall schedule.
	Relate current conditions to output of hydrologic model (B2)	3/1/2011	6/30/2012	52	
Minimum Flows and Levels "C"	Review and understand the various approaches used by the WMDs to set MFLs/Reservations (C1)	6/22/2011	9/30/2011	COMPLETED	
	Identify commonalities and differences in the approaches currently used to set criteria (C2)	6/22/2011	9/30/2011	COMPLETED	
	Develop options for a standard methodology to establish MFLs and Reservations (C3 a,b,c-MFLs Sub-Tasks)	9/30/2011	8/31/2012	113	Modification of the original task and identification of new sub-task (MFLs)
	Develop options for a standard methodology to establish MFLs and Reservations (C3 e,f – Reservations Sub-Tasks)	3/31/2012	10/31/2012	173	New sub task (Reservations)
	Develop options for uniform definitions of "significant harm" for different water body types (wetlands, lakes, rivers, springs) (C3d – MFLs Sub-Task)	9/30/2012	10/31/2012	173	
	Evaluate current peer review process of each WMD in order to develop options for a standard procedure to peer review MFLs and Reservations within the CFWI (C4a)	6/22/2011	1/31/2012	COMPLETED	Draft memorandum on peer-review options completed 1/31/2012; discussed with MOC 4/2/2012.
	Peer review the methods developed under C3 if appropriate (C4b)	2/28/2012	3/31/2013	323	Discussed with MOC 4/2/2012.
	Develop options for guidelines for implementing MFLs in the consumptive use permit program, planning efforts, and water shortage determinations where appropriate (C5)	4/30/2012	11/30/2012	202	
	Coordinate with the Environmental Measures and Hydrologic Assessment Teams to develop options for measures to evaluate MFLs and Reservation criteria in the model application (C6)	1/1/2012	6/30/2012	52	
Establish options for a collaborative process to update the priority water body lists to adopt new MFLs and Reservations or reassess established MFLs (C7)	1/1/2012	12/31/2012	233		
Data Monitoring & Investigations (D)	Standard data inventory sheet (D1)	3/1/2011	8/31/2011	COMPLETED	
	Intra-and inter-agency investigation of other existing data (D2)	3/1/2011	10/31/2011	COMPLETED	
	Inventory Development (D3)	3/1/2011	1/31/2012	COMPLETED	This task will continue to be updated.
	Establish Minimum Standards for Data Collection (D4)	3/1/2012	12/31/2012	233	
	Collaboration with other technical initiatives (D5)	3/1/2011	12/31/2012	233	
Groundwater Availability (E)	Identify evaluation methodology (E1)	1/1/2012	8/31/2012	113	Methodology transferred to GAT from RWSP
	Groundwater Withdrawal Impacts (E2)	5/18/2012	8/31/2012	113	
	Estimate of Groundwater Availability (E3)	5/18/2012	8/31/2012	113	
CFWI Regional Water Supply Plan (F)	Develop and assimilate population and water demand projections (F1)	12/19/2011	6/29/2012	51	
	Develop water conservation component for the CFWI (F2)	12/19/2011	7/2/2012	54	
	Evaluate and assess water sources done by Groundwater availability team (F3)	7/2/2012	8/31/2012	113	
	Develop water supply development component options (F4)	2/1/2012	11/30/2012	202	
	Develop water resource development component options (F5)	2/1/2012	11/30/2012	202	
	Conduct public workshops and meetings on the Regional Water Supply Plan (F6)	3/30/2012	3/29/2013	321	
	Produce DRAFT Regional Water Supply Plan (F7)	2/1/2012	12/28/2012	230	

Central Florida Water Initiative

CFWI Key Component Tracking										5/8/2012		
CFWI Guidance Document		Start	Scheduled Complete	Revised Complete (O)	Revised Complete (R)	Date Completed	Remaining Days to Complete	Days Behind (Optimistic)	Days Behind (Realistic)	Comments		
Initiatives	Key Components											
Hydrologic Analysis (A)	Key Components Model Calibration (A1)	3/1/2011	9/30/2011	11/23/2011	11/23/2011	11/23/2011	COMPLETED		54	Completes 11/23/2011		
	Technology Transfer Protocol (A1B)	11/10/2011	12/30/2011	1/30/2012	1/30/2012	11/30/2011	COMPLETED		31	Technology transfer memo finalized in Jan and reported to SC. Workshop held March 21 & 22		
	Statistical Trends in Hydrologic Data (A2)	3/1/2011	2/28/2012	2/28/2012	3/30/2012		(70)	-	31	Draft deliverable from consultants received and reviewed by HAT 2/28. Final revisions in March.		
	MILESTONE EFFORT: Reference Condition	10/1/2011	3/31/2012	5/15/2012	7/1/2012		(37)	45	92	The selected reference condition can not be tested until the USGS ECFT model is delivered. A projected end date of July 1 (R) or May 15 (O).		
	MILESTONE EFFORT: Release of groundwater model by USGS	2/1/2011	3/30/2012	4/30/2012	4/30/2012		(38)	31	31	Delayed by 1 month. Revised delivery date by USGS is April 30, 2012.		
	MILESTONE EFFORT: Develop model pre and post processors for PM Viewer	12/1/2011	2/29/2012	2/29/2012	2/29/2012	2/29/2012	COMPLETED		-	-	Work completed and the tools and sample output delivered to HAT. Cover Memo on WIKI	
	MILESTONE EFFORT: Develop of initial scenarios and creation of water use data sets	1/12/2012	2/22/2012	2/22/2012	2/22/2012		(76)	-	-			
	MILESTONE EFFORT: Develop draft evaluation methodology for GAT	10/1/2011	2/29/2012	2/29/2012	2/29/2012		(69)	-	-	Preliminary draft completed and initial review by HAT underway.		
	MILESTONE EFFORT: Develop Environmental and Hydrologic relationships	11/1/2011	2/29/2012	2/29/2012	2/29/2012		(69)	-	-			
	MILESTONE EFFORT: Develop environmental measures (limiting conditions for availability determination)	12/1/2011	2/29/2012	5/23/2012	7/4/2012		(69)	84	126	The proposed measures can not be tested until the USGS ECFT model is delivered. A projected end date of July 4 (R) or May 23 (O).		
	USGS Project to Quantify Factors Affecting Groundwater and Lake Levels in the Central Florida Area (A3)	3/1/2011	6/30/2012	6/30/2012	6/30/2012		52	-	-			
	Initial Model Scenarios (A4)	3/15/2011	4/30/2012	5/15/2012	7/15/2012		(8)	15	76	Schedule slipping; evaluating degree to which it will affect overall CFWI schedule		
Documentation (A5)	3/1/2011	5/30/2012	6/30/2012	8/30/2012		22	31	92				

Central Florida Water Initiative

CFWI Regional Water Supply Plan

5/8/2012				
Team	Key Components	Start	End	Remaining Days to Complete
Public Involvement Core Team	Develop Unified Messaging	4/1/2012	5/15/2012	7
	Finalize Communication Plan	4/1/2012	6/1/2012	23
	Public Kickoff meeting	4/1/2012	6/30/2012	52
	Periodic Public Update meeting(s)	4/15/2012	10/15/2012	157
	Technical Methods Workshop	10/1/2012	11/15/2012	187
	Workshop on Draft Regional Water Supply Plan	11/1/2012	12/15/2012	217
	Final Regional Water Supply Plan	1/31/2013	4/30/2013	352
	<i>Ad-hoc</i> Meeting(s)	2/1/2012	1/31/2013	263