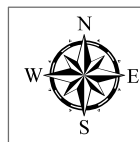
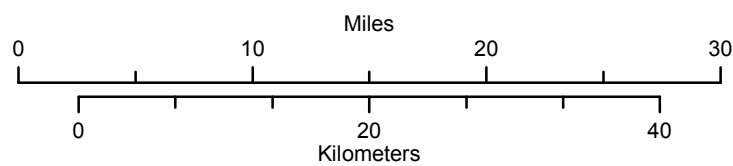


Figure 1

GROUNDWATER MONITORING SITE LOCATION MAP



PARSONS BRINCKERHOFF

Project: 173691F	Projection: UTM Zone 17N	
Prepared: 06-07-12	Horizontal Datum: NAD83	Vertical Datum: N/A
Prepared by: MS	Revised by:	Revised:
File: T:\GIS\173691F-CFCAIDatabase\20120611\Groundwater_sites.mxd		

Central Florida Water Initiative



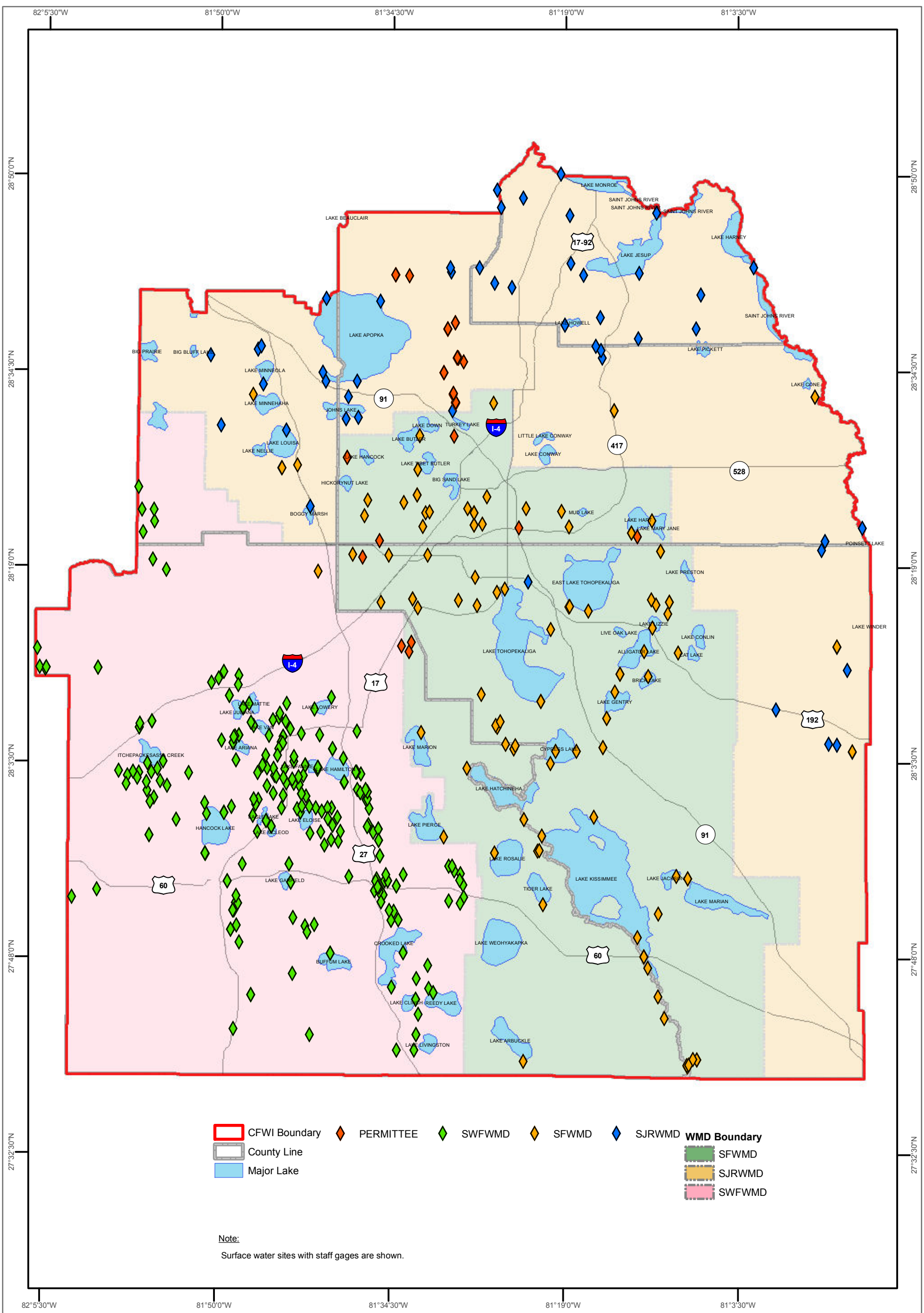
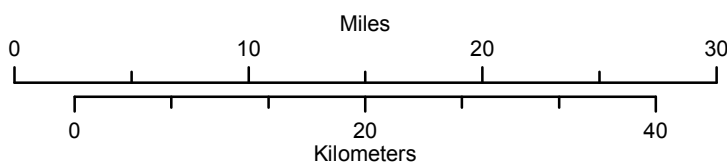


Figure 2

SURFACE WATER STAGE MONITORING SITE LOCATION MAP



Project: 173691F		Projection: UTM Zone 17N
Prepared: 06-07-12	Horizontal Datum: NAD83	Vertical Datum: N/A
Prepared by: MS	Revised by:	Revised:
File: T:\GIS\173691F-CFCAIDatabase\20120611\Surface_water_sites.mxd		



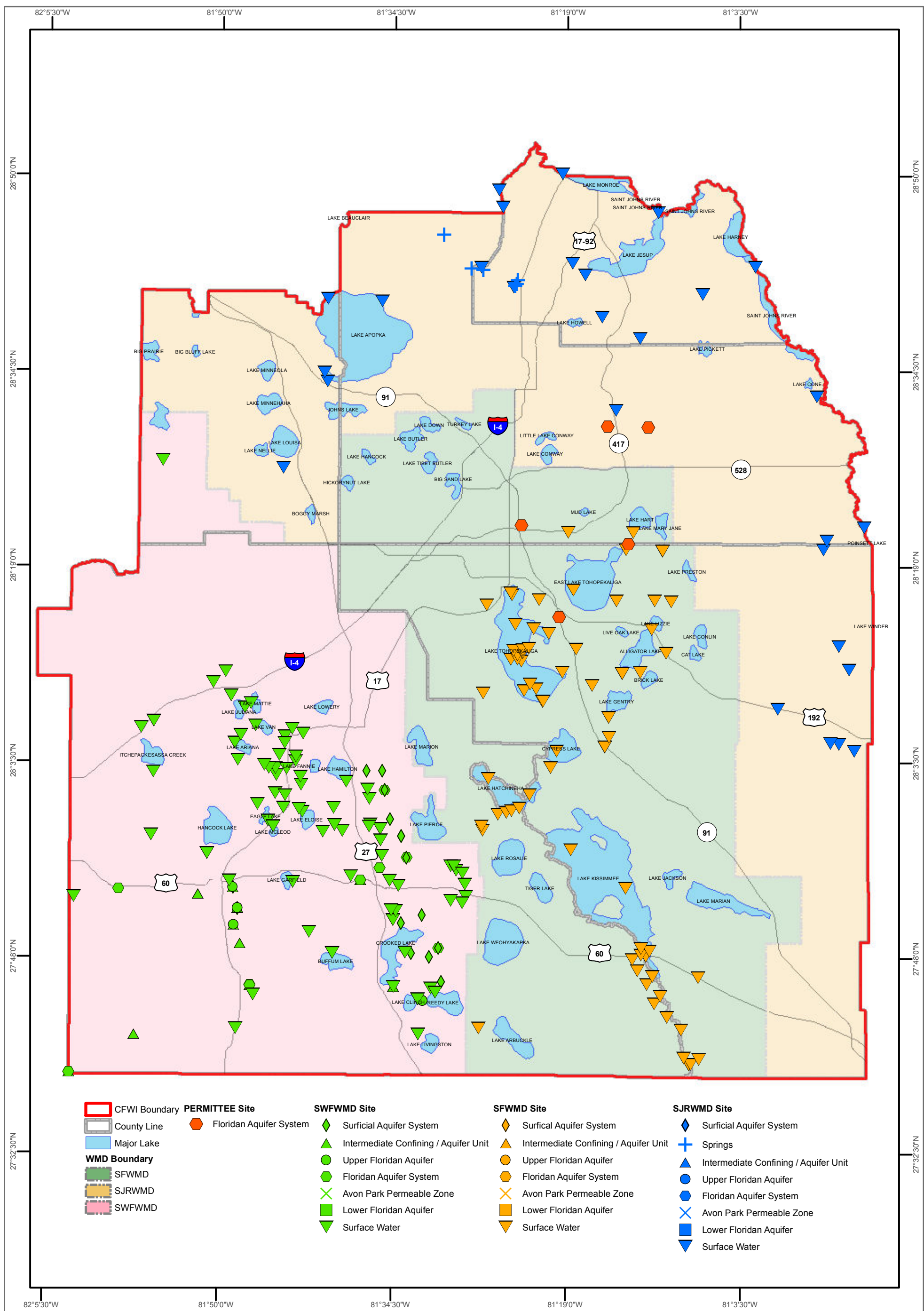
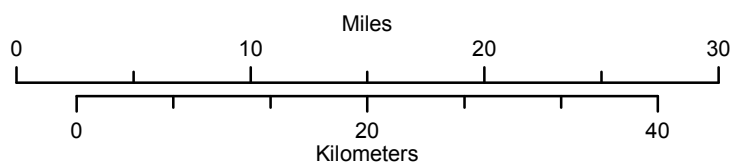


Figure 3

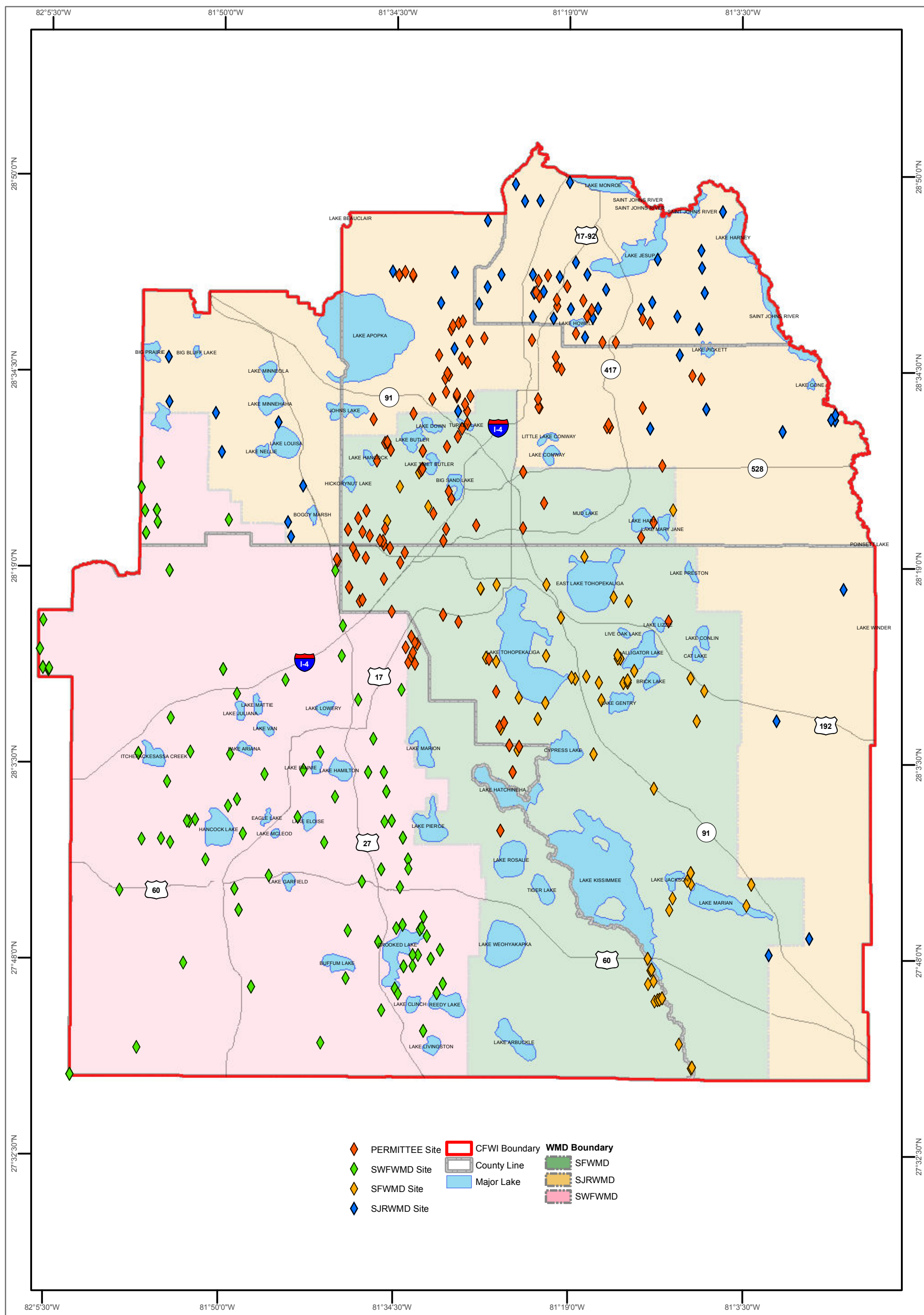
WATER QUALITY MONITORING SITE LOCATION MAP



PARSONS BRINCKERHOFF

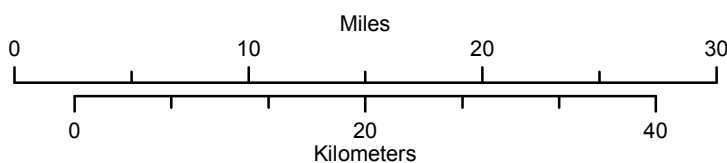
Project: 173691F	Projection: UTM Zone 17N	Vertical Datum: N/A
Prepared: 06-07-12	Horizontal Datum: NAD83	Revised:
Prepared by: MS	Revised by:	
File: T:\GIS\173691F-CFCAIDatabase\20120611\Water_quality_sites.mxd		





SURFICIAL AQUIFER GROUNDWATER MONITORING SITE LOCATION MAP

Figure 4



PARSONS BRINCKERHOFF

Project: 173691F	Projection: UTM Zone 17N	
Prepared: 06-07-12	Horizontal Datum: NAD83	Vertical Datum: N/A
Prepared by: MS	Revised by:	Revised:
File: T:\GIS\173691F-CFCAIDatabase\20120611\Groundwater_sites.mxd		

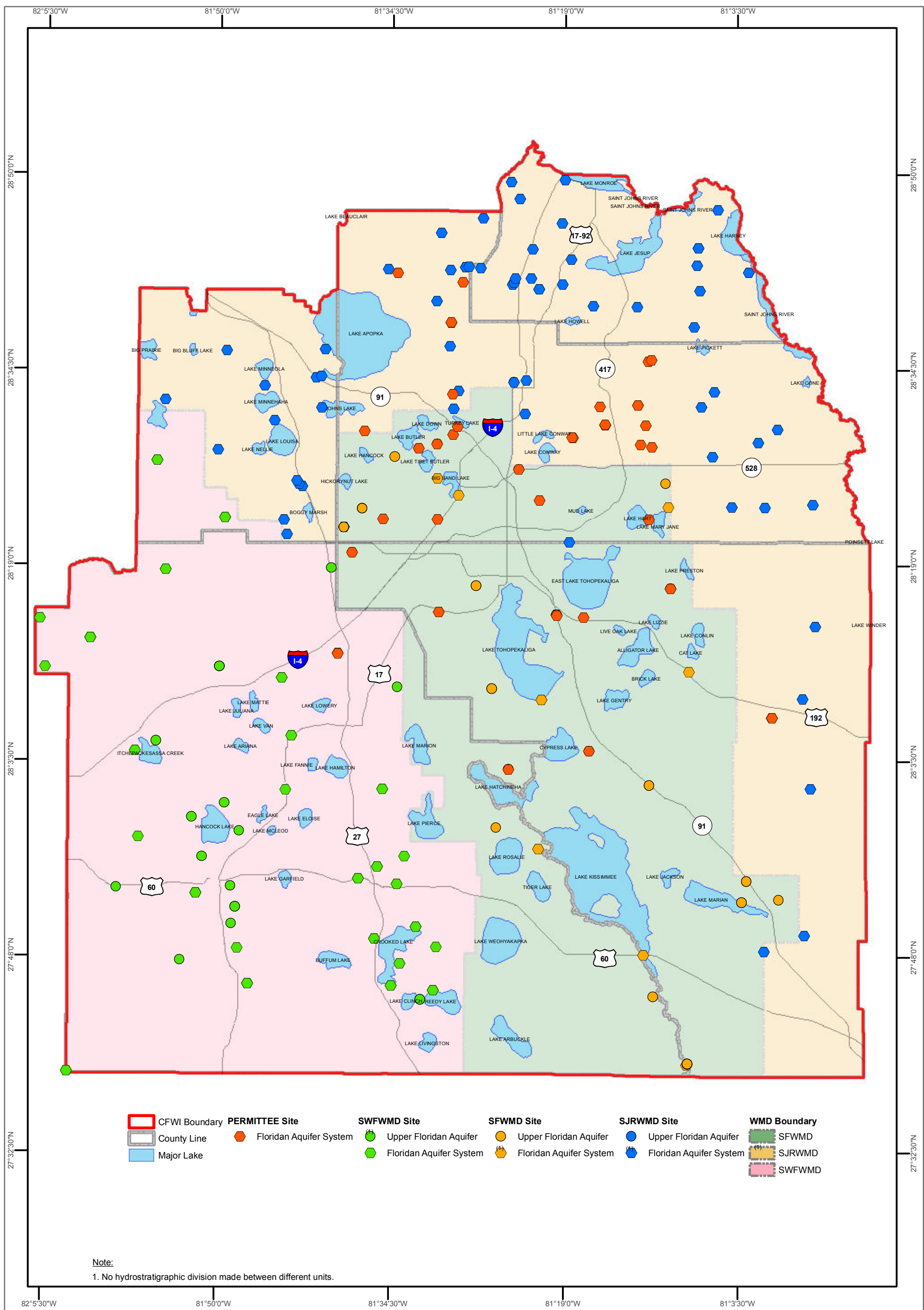
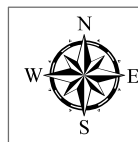
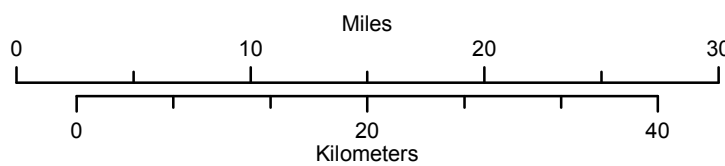


Figure 5

UPPER FLORIDAN AQUIFER MONITORING SITE LOCATION MAP



**PARSONS
BRINCKERHOFF**

Project: 173691F	Projection: UTM Zone 17N	
Prepared: 06-07-12	Horizontal Datum: NAD83	Vertical Datum: N/A
Prepared by: MS	Revised by:	Revised:
File: T:\GIS\173691F-CFCAIDatabase\20120611\Groundwater_sites_UFA.mxd		

Central Florida
Water Initiative



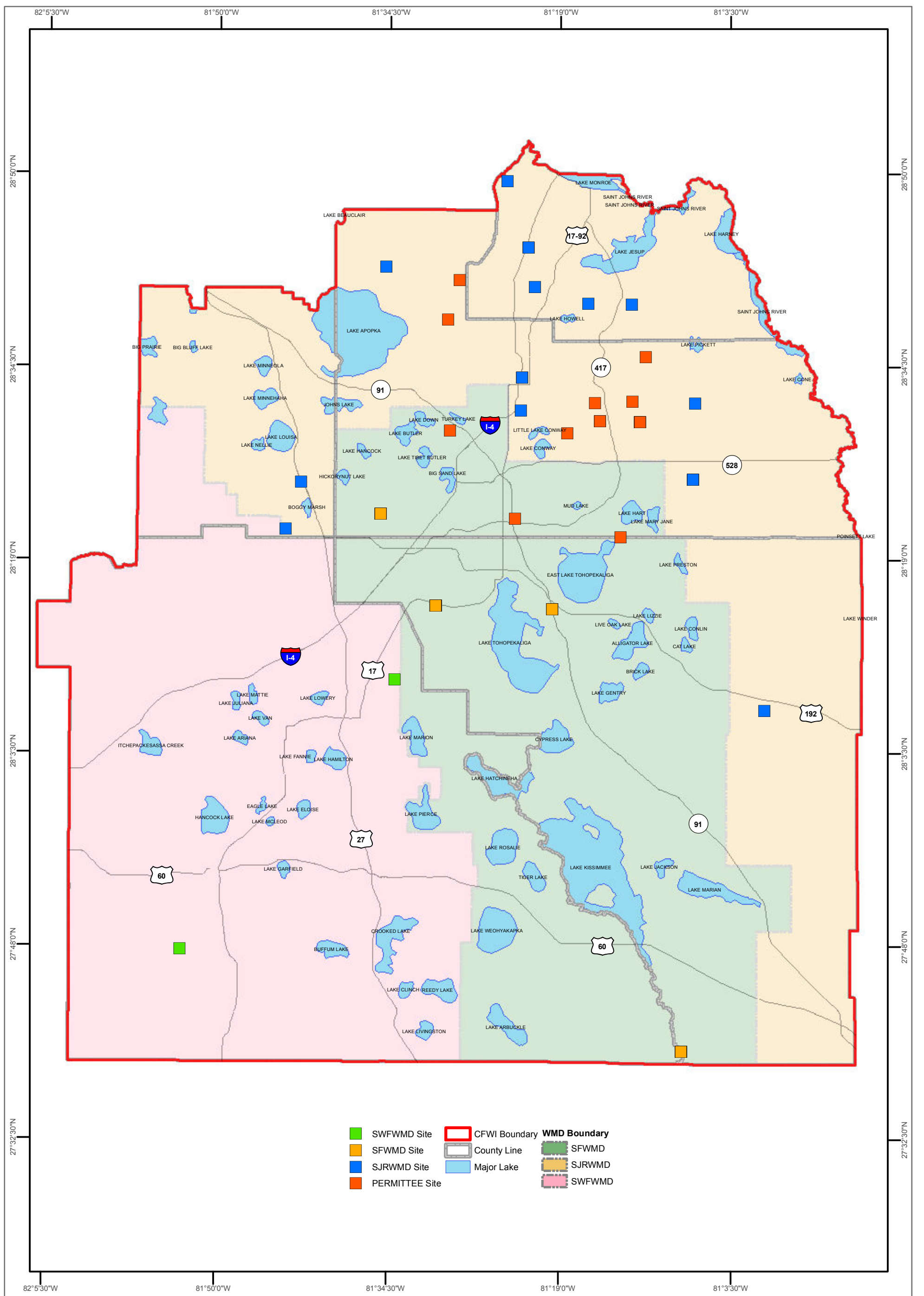
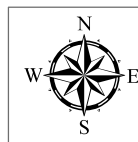
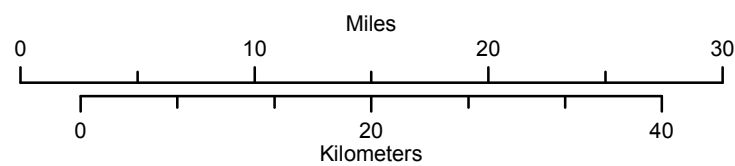


Figure 6

LOWER FLORIDAN AQUIFER MONITORING SITE LOCATION MAP



PARSONS BRINCKERHOFF

Project: 173691F	Projection: UTM Zone 17N	
Prepared: 06-07-12	Horizontal Datum: NAD83	Vertical Datum: N/A
Prepared by: MS	Revised by:	Revised:
File: T:\GIS\173691F-CFCAIDatabase\20120611\Groundwater_sites_LFA.mxd		

Central Florida Water Initiative



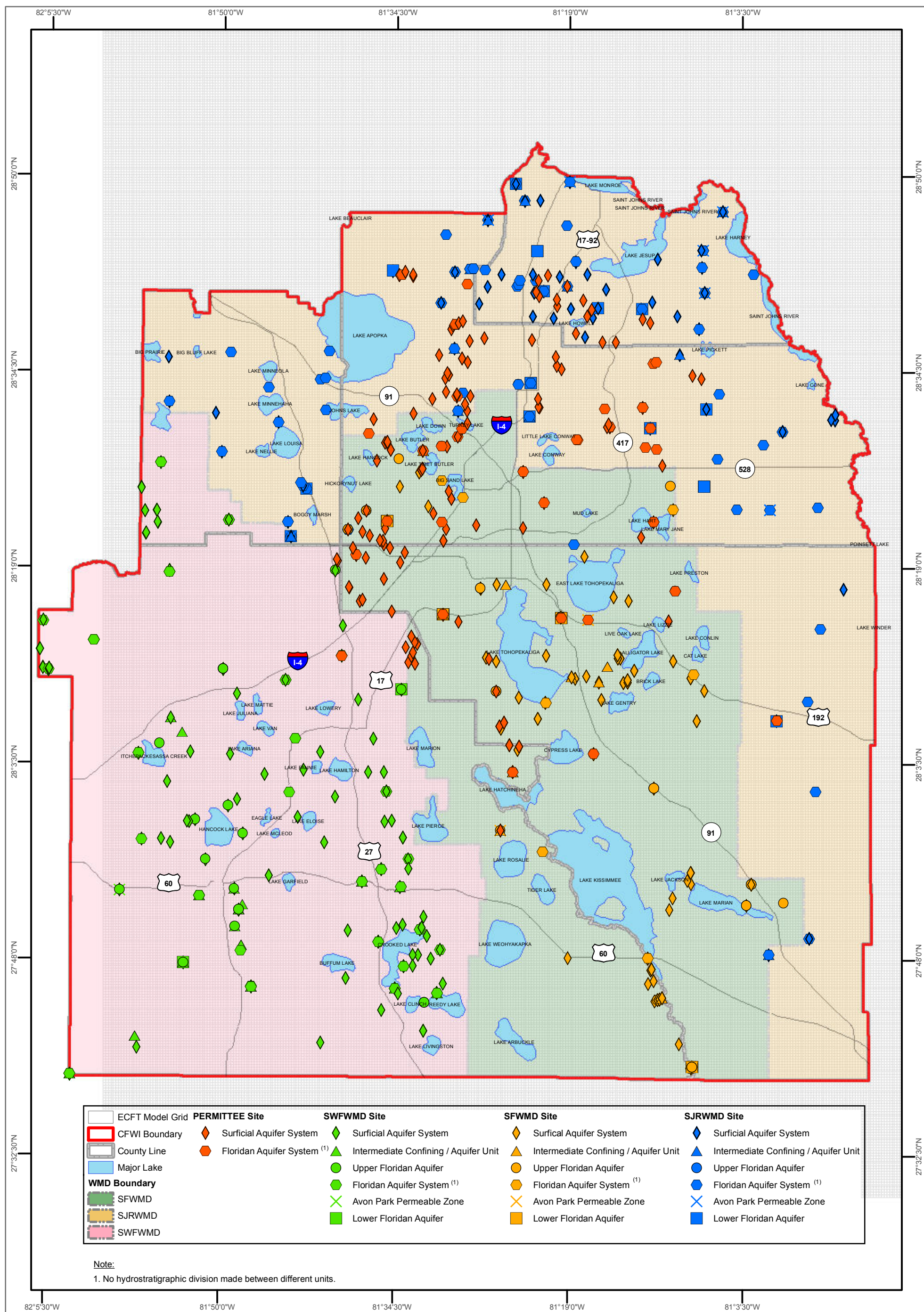
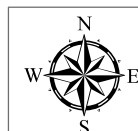
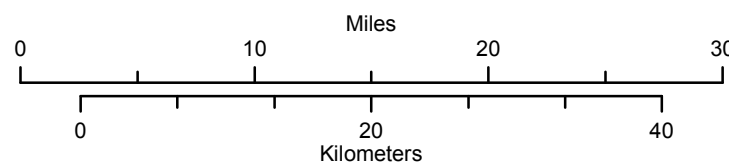


Figure 7

ECFT MODEL GRID & GROUNDWATER MONITORING SITE LOCATION MAP



PARSONS BRINCKERHOFF

Project: 173691F	Projection: UTM Zone 17N	
Prepared: 06-07-12	Horizontal Datum: NAD83	Vertical Datum: N/A
Prepared by: MS	Revised by:	Revised:
File: T:\GIS\173691F-CFCAIDatabase\20120611\Groundwater_sites_GRID.mxd		



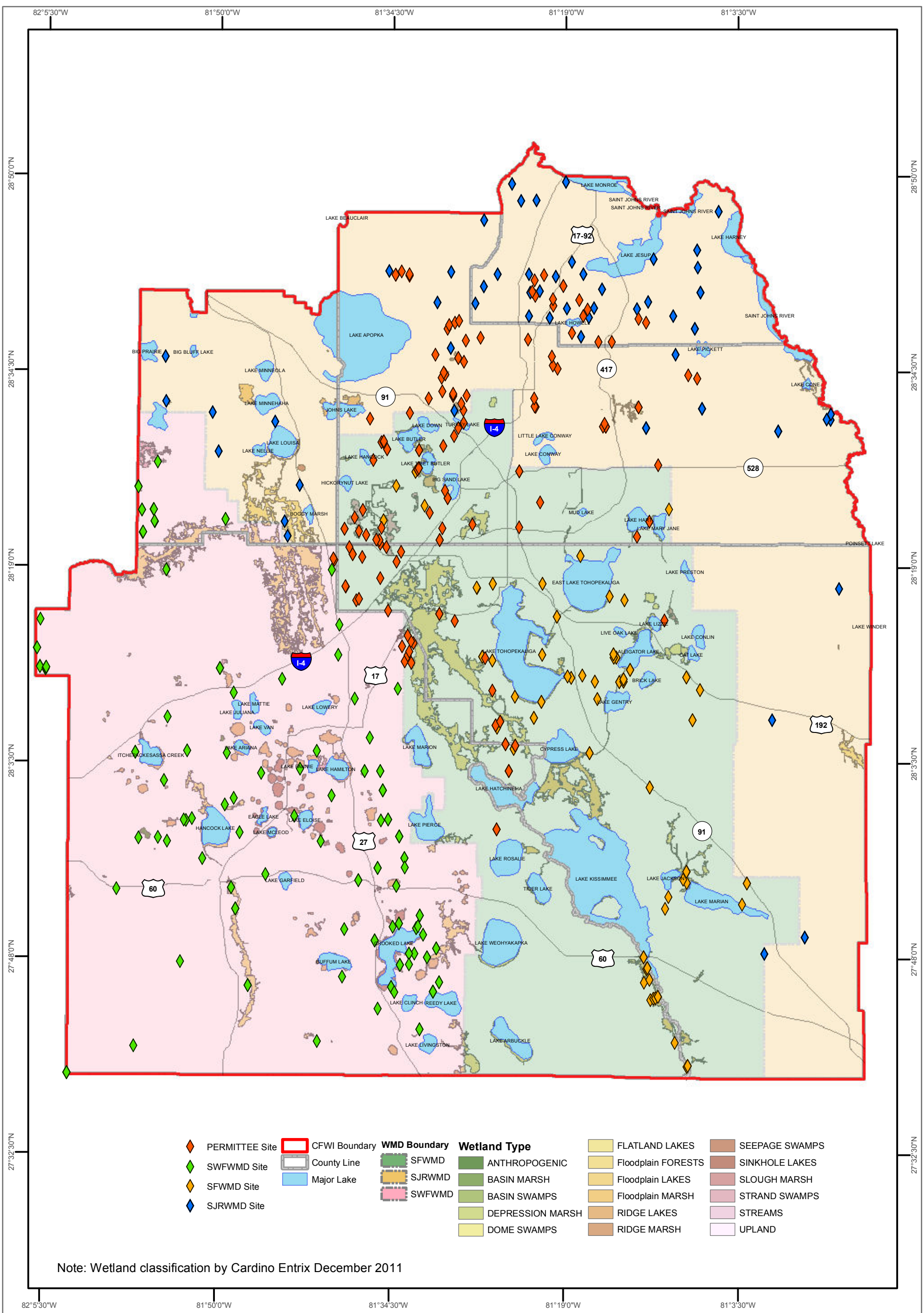
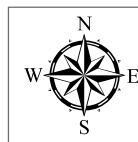
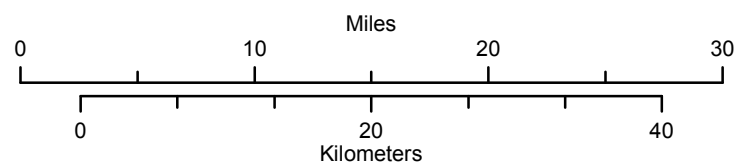


Figure 8

SAS MONITORING SITE & WETLAND PROXIMITY MAP



PARSONS BRINCKERHOFF

Project: 173691F	Projection: UTM Zone 17N	
Prepared: 06-07-12	Horizontal Datum: NAD83	Vertical Datum: N/A
Prepared by: MS	Revised by:	Revised:
File: T:\GIS\173691F-CFCAIDatabase\20120611\Groundwater_SAS_wetlands.mxd		

Central Florida Water Initiative



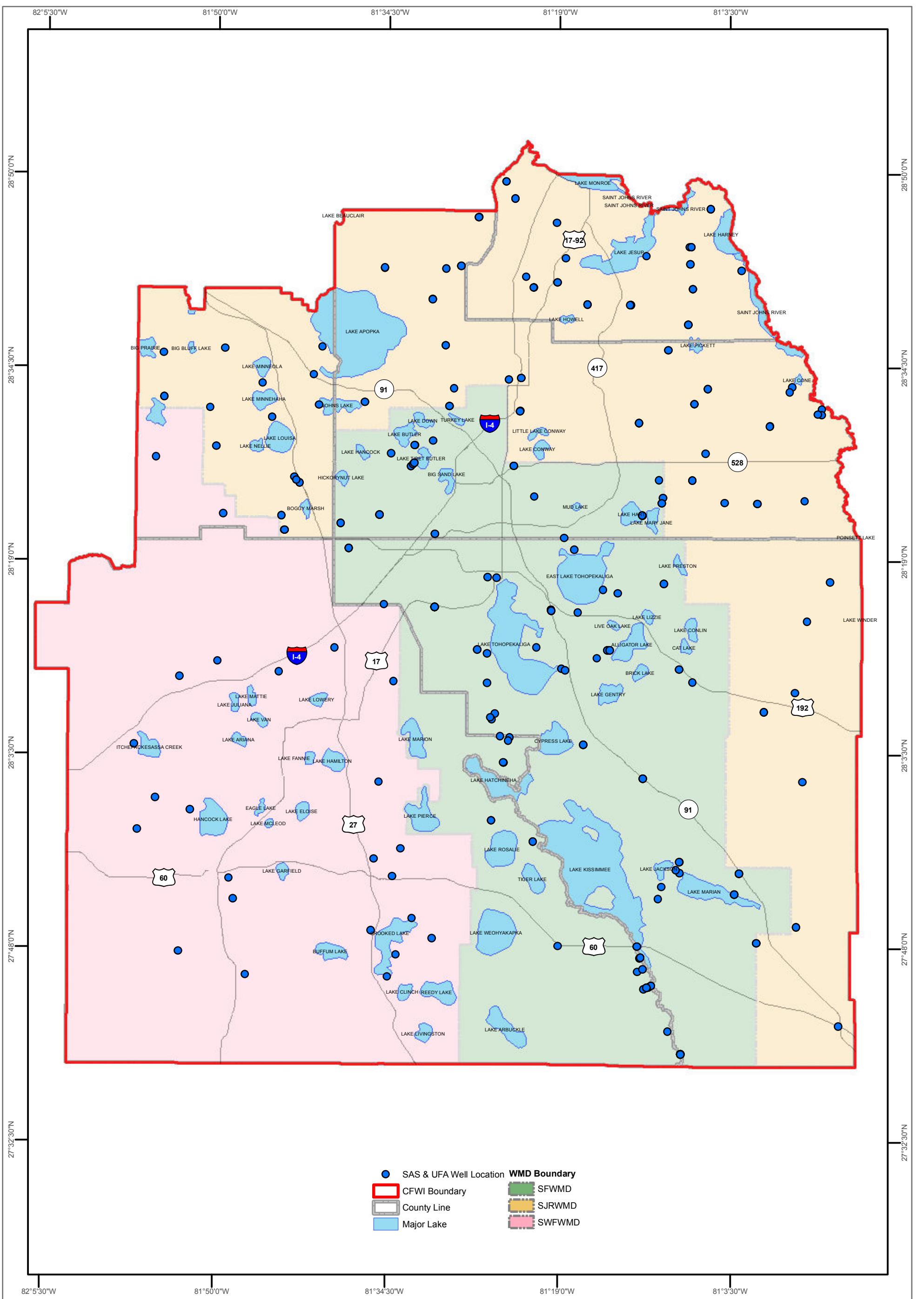
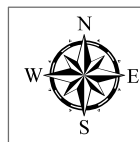
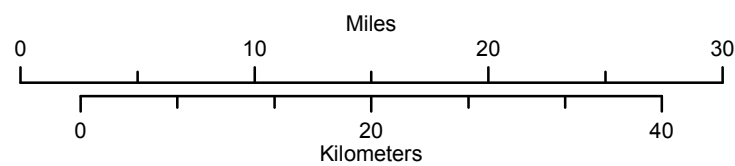


Figure 9

WELL CLUSTER SITE LOCATION MAP



**PARSONS
BRINCKERHOFF**

Project: 173691F	Projection: UTM Zone 17N	
Prepared: 06-07-12	Horizontal Datum: NAD83	Vertical Datum: N/A
Prepared by: MS	Revised by:	Revised:
File: T:\GIS\173691F-CFWA\Database\20120611\Groundwater_sites_clusters.mxd		

Central Florida
Water Initiative

