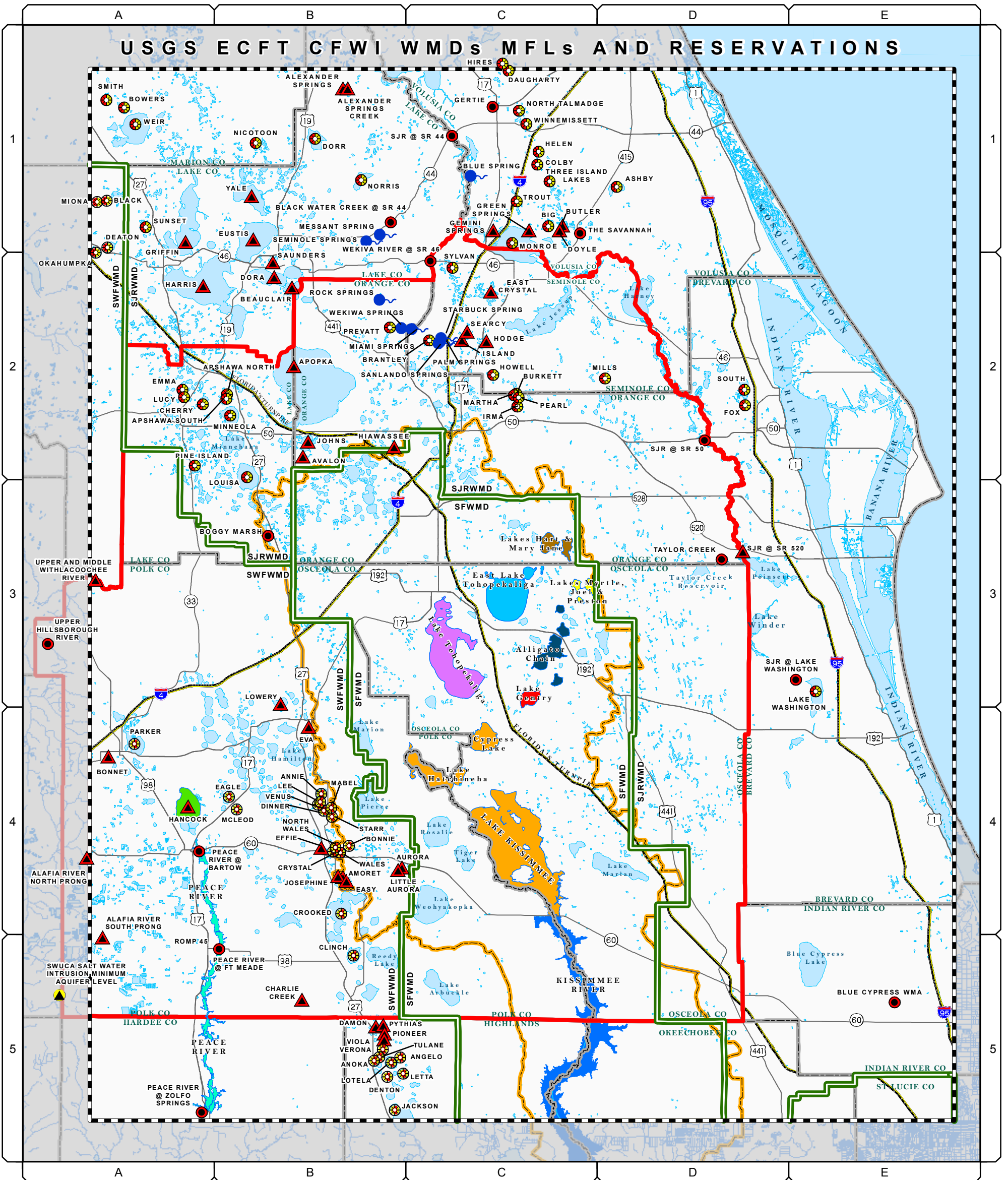
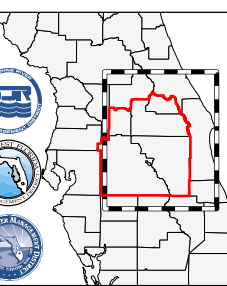


USGS ECFT CFWI WMDs MFLs AND RESERVATIONS



SJRWMD MFLs	SJRWMD MFLs	SJRWMD MFLs	SJRWMD PROPOSED MFLs	SFWWMD MFLs	SFWWMD MFLs	SFWWMD PROPOSED MFLs
BIG LAKE - C1 BLACK WATER CREEK @ SR 44 - B1 BLUE CYPRESS WMA - E5 BLUE SPRING - C1 BOGGY MARSH - B3 BOWERS LAKE - A1 CHERRY LAKE - A2 FOX LAKE † - D2 LAKE ASHBY - D1 LAKE BRANTLEY - C2 LAKE BURKETT - C2 LAKE COLBY - E2 LAKE DAUGHARTY - C1 LAKE DORR - C2 LAKE EMMA - A2 LAKE GERTIE - C1 LAKE HELEN - E2 LAKE HIRES - C1 LAKE HOWELL - C2 LAKE IRMA - C2 LAKE LOUISA - B2 LAKE LUCY - A2	LAKE MARTHA - B2 LAKE MINNEOLA - B2 LAKE MONROE - C1 LAKE NORRIS † - B1 LAKE PEARL - C2 LAKE WASHINGTON - E3 LAKE WEIR - A1 LAKE WINNEMISSETT - C1 MESSANT SPRING - B1 MIAMI SPRINGS - C2 MILLS LAKE - D2 NICOTOON LAKE - B1 NORTH LAKE APSHAWA † - B2 NORTH LAKE TALMADGE - C1 PALM SPRINGS - C2 PINE ISLAND LAKE - A2 PREVATT LAKE † - B2 ROCK SPRINGS - B2 SANLANDO SPRINGS - C2 SEMINOLE SPRINGS - B1 ST JOHN'S RIVER @ LAKE WASHINGTON - E3 ST JOHN'S RIVER @ SR 44 - C1	ST JOHN'S RIVER @ SR 50 - D2 SMITH LAKE - A1 SOUTH LAKE † - D2 SOUTH LAKE APSHAWA † - B2 STARBUCK SPRING - D3 SUNSET LAKE - A1 SYLVAN LAKE † - C2 TAYLOR CREEK - D3 THE SAVANNAH - C1 THREE ISLAND LAKES - E2 TROUT LAKE - C1 WEKIVA RIVER @ SR 46 † - C2 WEKIVA SPRINGS - B2 <i>(† MFLs scheduled for re-evaluation)</i>	ALEXANDER SPRINGS - B1 ALEXANDER SPRINGS CREEK - B1 EAST CRYSTAL LAKE - C2 GEMINI SPRINGS - C1 ISLAND LAKE - C2 JOHNS LAKE - B2 LAKE APOPKA - B2 LAKE AVALON - B2 LAKE BEAUCLAIR - B2 LAKE BUTLER - C1 LAKE DORA - B2 LAKE DOYLE - C1 LAKE EUSTIS - B1 LAKE GRIFFIN - A1 LAKE HARRIS - A1 LAKE HIAWASSEE - B2 LAKE HODGE - C2 LAKE HOWELL - B2 LAKE SAUNDERS - B2 LAKE SEARCY - C2 LAKE YALE - B1 ST JOHN'S RIVER @ SR 520 LAKE POINSETT - D3	ANGELO - B5 ANNIE - B4 ANOKA - D10 BLACK - A1 BONNIE - B4 CLINCH - B5 CROOKED - B4 CRYSTAL - B4 DEATON - A1 DENTON - B5 DINNER - B4 EAGLE - B4 JACKSON - B5 LEE - B4 LETTA - B5 LOTELA - B5 MABEL - B4 MCLEOD - B4 MIONA - A1 NORTH WALES - B4 OKAHUMPKA - A2 PARKER - A4	PEACE RIVER @ BARTOW † - A4 PEACE RIVER @ FT MEADE † - B5 PEACE RIVER @ ZOLFO SPRINGS † - A5 SWUCA MINIMUM AQUIFER LEVEL - A5 UPPER HILLSBOROUGH RIVER - A3 VENUS - B4 VERONA - B5 WALES - B4 <i>(† MFLs scheduled for re-evaluation)</i>	ALAFIA RIVER NORTH PRONG - A4 ALAFIA RIVER SOUTH PRONG - A5 AMORET - B4 AURORA - D8 BONNET - A4 CHARLIE CREEK - C9 DAMON - B5 EASY - B4 EFFIE - B4 EVA - B4 HANCOCK - A4 JOSEPHINE - B4 LITTLE AURORA - D8 LOWERY - B4 PIONEER - B5 PYTHIAS - B5 UPPER/MIDDLE WITHLACOCHEE RIVER - A3 VIOLA - B5



- SJRWMD - SFWWMD MFLs**
- Adopted MFL Lake
 - Adopted MFL River/Creek/Wetland
 - Adopted MFL Spring
 - Adopted Aquifer MFL
 - Proposed MFL

- SFWWMD Proposed Reservations For The Kissimmee Basin And SFWWMD Proposed Reservations For Lake Hancock And The Peace River**
- East Lake Tohopekaliga
 - Alligator Chain Group
 - Kissimmee Group
 - Gentry
 - Hancock
 - Hart & Mary Jane
 - Myrtle, Joel & Preston
 - Tohopekaliga
 - Kissimmee River
 - Peace River

- CFWI Boundary
- USGS ECFT Boundary
- Water Management Boundary
- County Boundary

