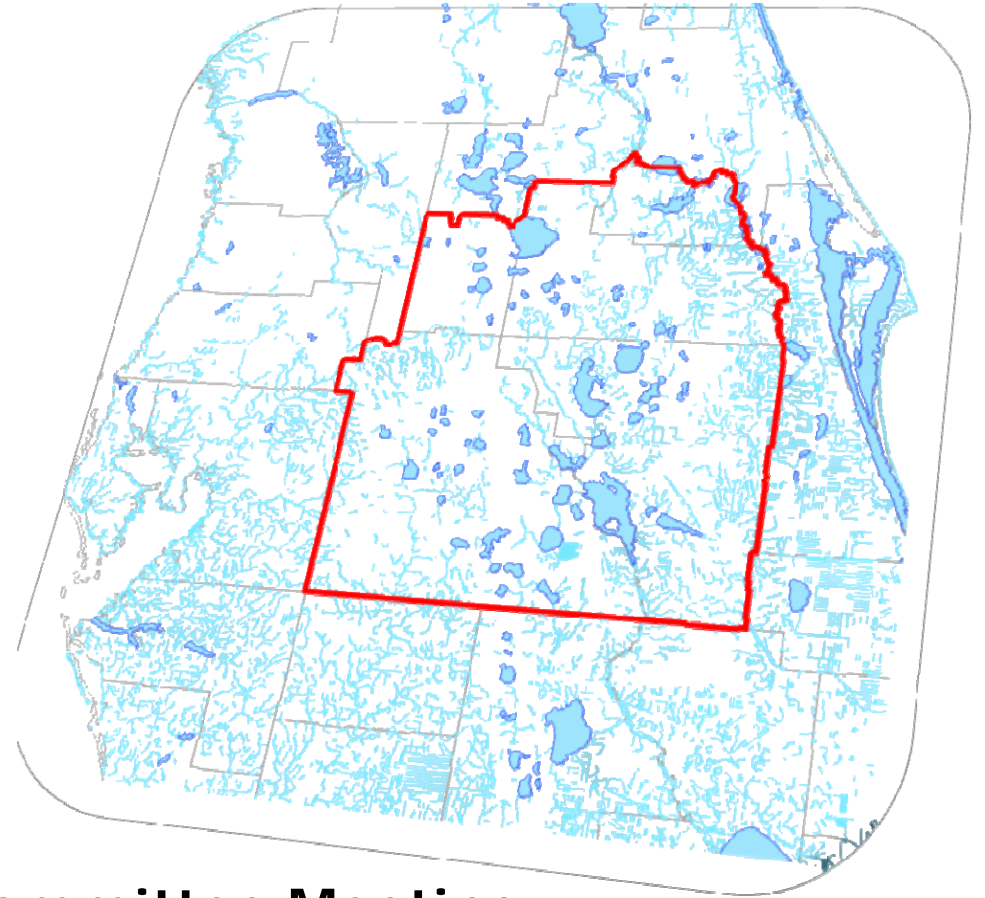


Regulatory Team



CFWI Steering Committee Meeting
December 13, 2013

Goal

Guiding Principle three for the CFWI is to “establish consistent rules and regulations for the three water management districts that meet the Collaborative Process Goals and implement the results of this Central Florida Water Initiative.”

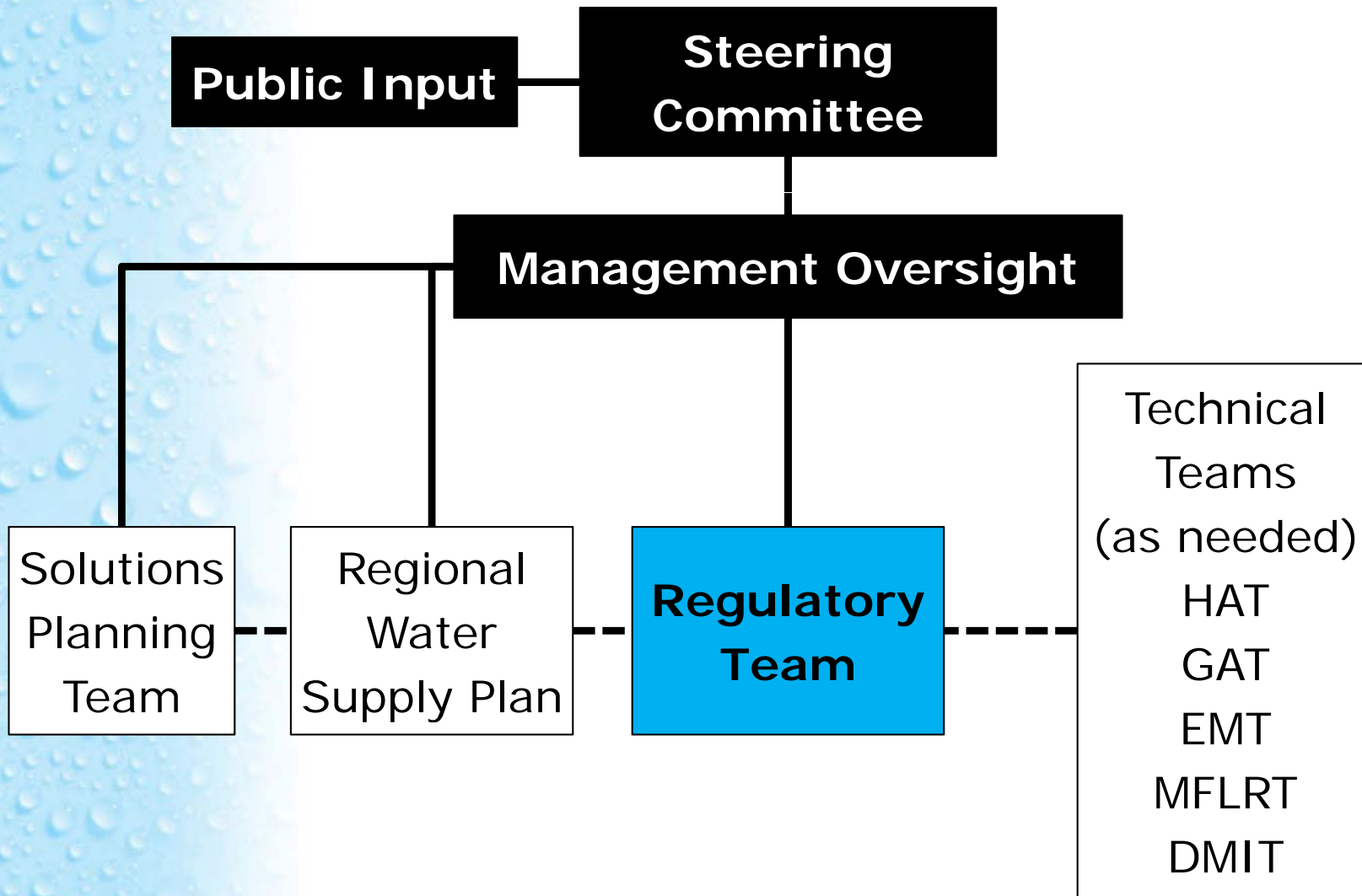
Regulatory Team Membership

Team Leader	Len Lindahl, SFWMD
Water Management Districts	Mike Register, SJRWMD Alba Más, SWFWMD Sharon Trost, SFWMD
Florida Department of Environmental Protection	Janet Llewellyn, Office of Water Policy
Florida Department of Agriculture & Consumer Services	Steve Lamb, Federico Lamb & Associates
Environmental	Jane Graham, Audubon Florida
Public Water Supply Utilities	Krystal Azzarella, Polk County Debbie Bradshaw, OUC
Legal Counsel	Mary Ellen Winkler, SJRWMD Laura Donaldson, SWFWMD Beth Ross, SFWMD Ed de la Parte, Public Water Supply

Regulatory Team Objectives

- **Develop options for consistent regulations (including Legislative) to implement the solution strategies identified in the CFWI process.**
- **Assist with resource recovery strategies.**
- **Provide for equitable and predictable review of consumptive use permit applications among the districts.**

Central Florida Water Initiative



Scope of Work

1. The WMDs will generate monthly WMD reports of consumptive use program data such as: pending applications, 10 year compliance reports, and anticipated renewal applications.
2. Understand the products and deliverables from the Regional Water Supply Plan (RWSP). Identify options to solve regulatory impediments to implementing Team(s) recommendations, including options for regulatory or statutory changes as needed.
3. Develop options for a consistent regulatory definition of sustainable water withdrawals and reasonable-beneficial demands in the CFWI region and associated implementation strategies.
4. Review management activities associated with permitted uses to maximize yield and minimize environmental impacts to maximize use of traditional supplies.

Scope of Work

5. Identify options for alignment of regulatory programs to employ appropriate implementation strategies and management activities identified above.
6. Identify a process to analyze implementation of CFWI strategies and provide for on-going consistency in implementation by the districts.
7. Present findings of the above evaluations to the Management Oversight Committee and Steering Committee.
8. In coordination with the Regulatory Team's strategies and Solutions Planning Team's recommended projects, develop options, as needed, to better align permitted quantities with reasonable-beneficial demands over the term of the permit, consistent with State Water Policy concerning water conservation.

Requested Action

- **Request approval of the Regulatory Team's Scope of Work for incorporation into the Central Florida Water Initiative Guiding Document.**