

# Groundwater Availability Team

*Steering Committee Meeting  
August 16, 2013*

[www.cfwiwater.com](http://www.cfwiwater.com)

# Guiding Principle #1

Identify the sustainable quantities of traditional groundwater sources available for water supply that can be used without causing unacceptable harm to the water resources and associated natural systems.



# Groundwater Availability Measuring Sticks

- Established and proposed MFLs within the CFWI
  - Regulatory constraints including SWUCA
- Non-MFL lakes/wetlands
- Non-MFL springs
- Aquifer water quality/saltwater intrusion

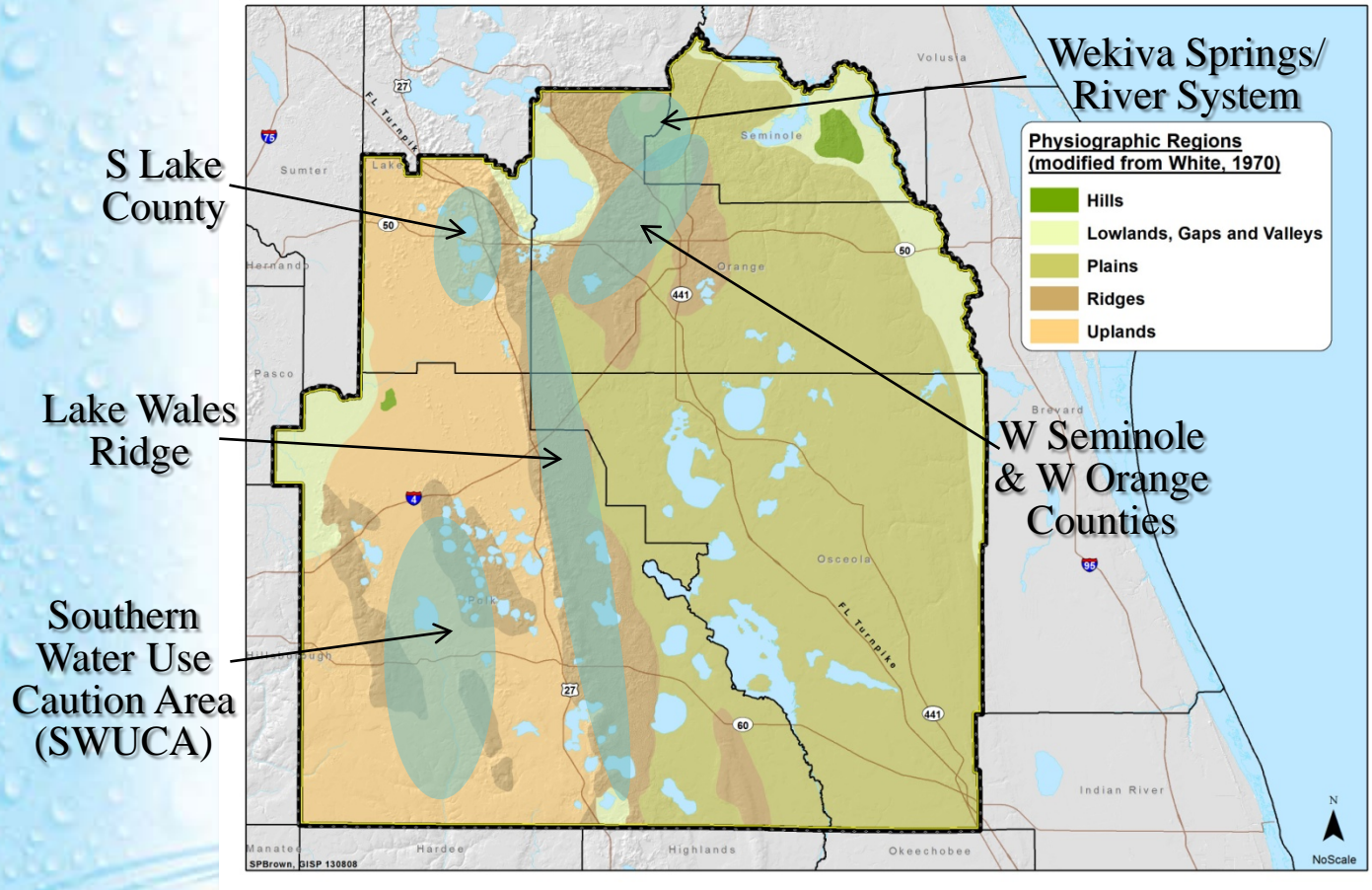
# Findings

- Traditional groundwater sources can meet some, but not all projected needs in the CFWI.

# Findings

- Areas that limit future groundwater availability based on measuring sticks
  - Wekiva Springs/River System
  - West Seminole County/West Orange County
  - South Lake County
  - Lake Wales Ridge
  - SWUCA

# Primary Areas Susceptible to Groundwater Withdrawals



# CFWI Planning Level Groundwater Availability Estimates

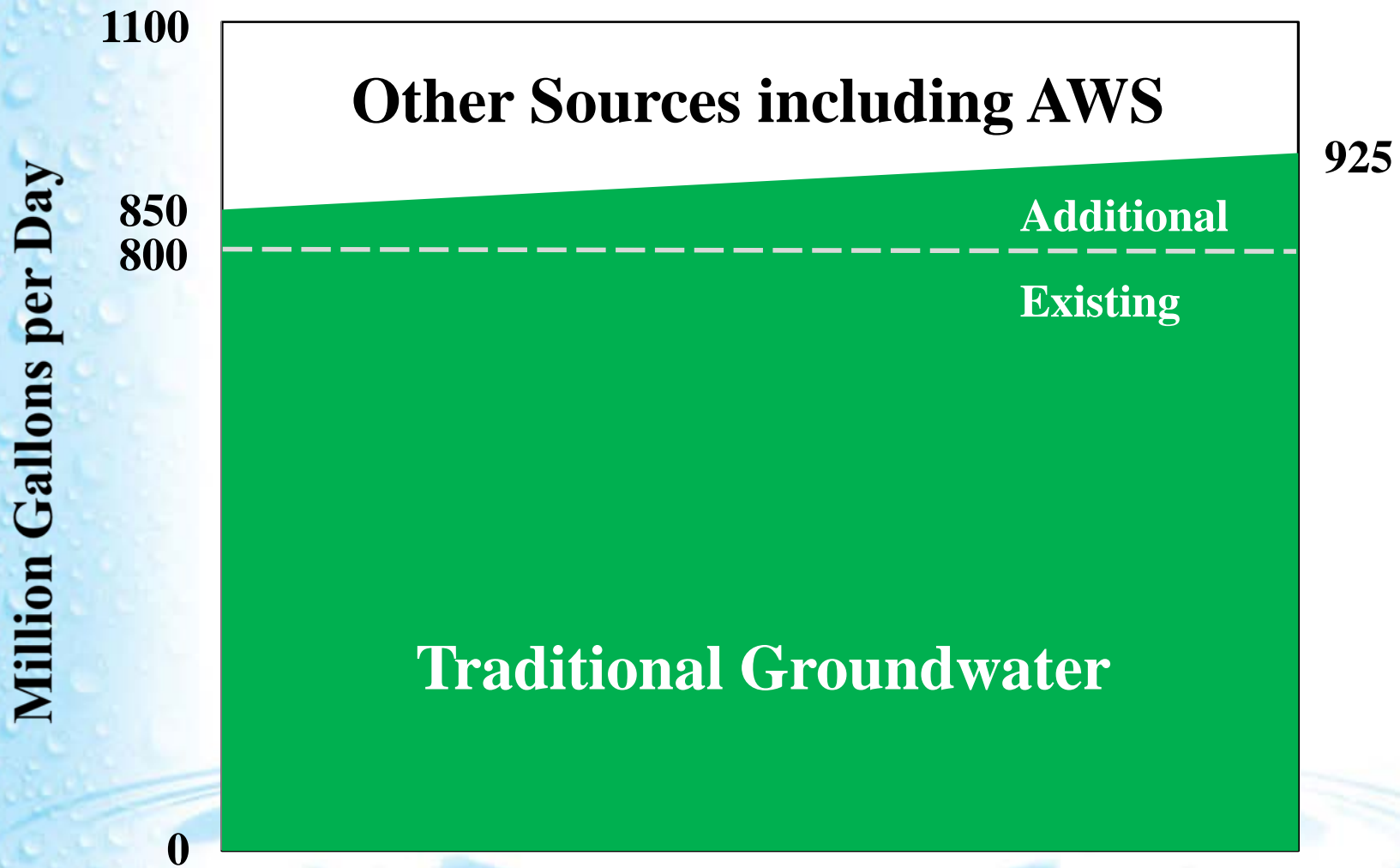
- 800 mgd
  - Average groundwater use (1995 to 2010)
  - Includes some management activities
- 850 mgd
  - Lower level of planning range
  - Additional management activities (local scale)
- 925 mgd
  - Upper level of planning range
  - More management activities (regional scale)

# Management Activities to Extend Traditional Groundwater

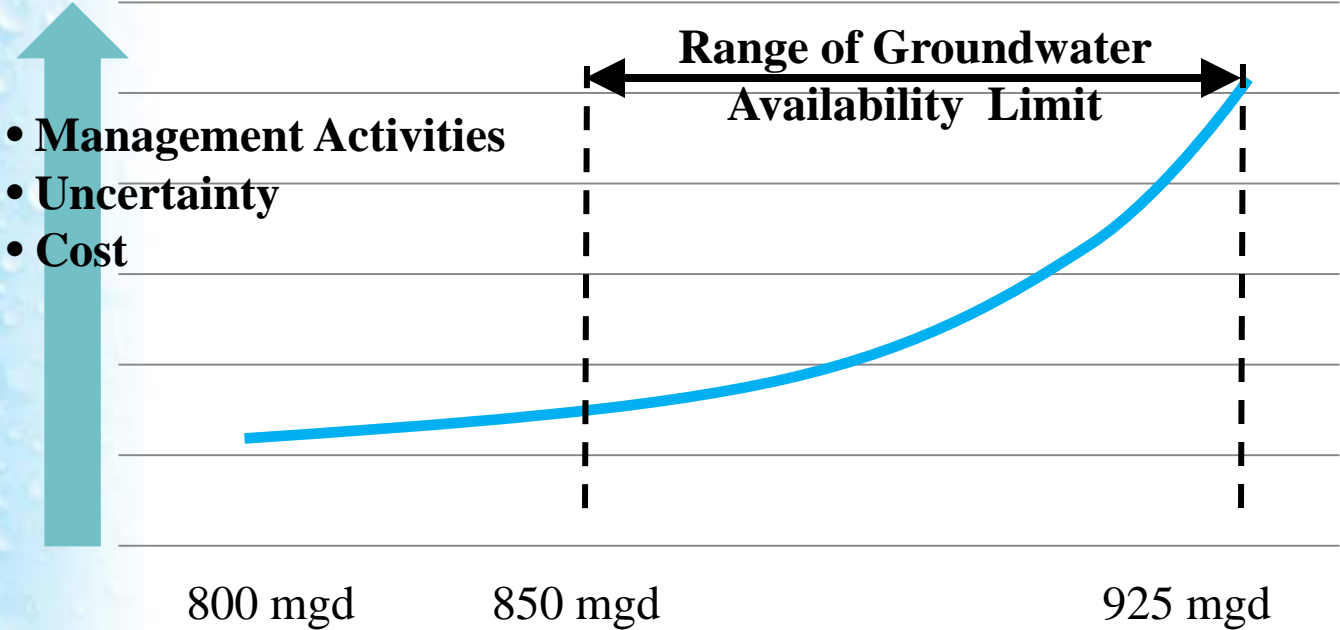
- Reclaimed water irrigation
- Aquifer recharge
- Shifting withdrawals
  - Relocate withdrawals
  - Deepen wells (e.g., LFA)
- Environmental mitigation



# Sources to Meet 2035 Demands



# Traditional Groundwater Availability



# Recommended Action

- Accept groundwater availability findings for inclusion in the RWSP
  - Range for groundwater availability: 850 mgd to 925 mgd

# Next Steps

- Regional Water Supply Plan (Nov)
  - Re-initiate coordinated MFL prevention/recovery strategy
- Solutions Team (through 2014)
  - Guiding Principle #2 - Develop strategies to meet demands in excess of traditional groundwater sources.
- Guiding Principle #3
  - Consistent regulations

**Questions?**

