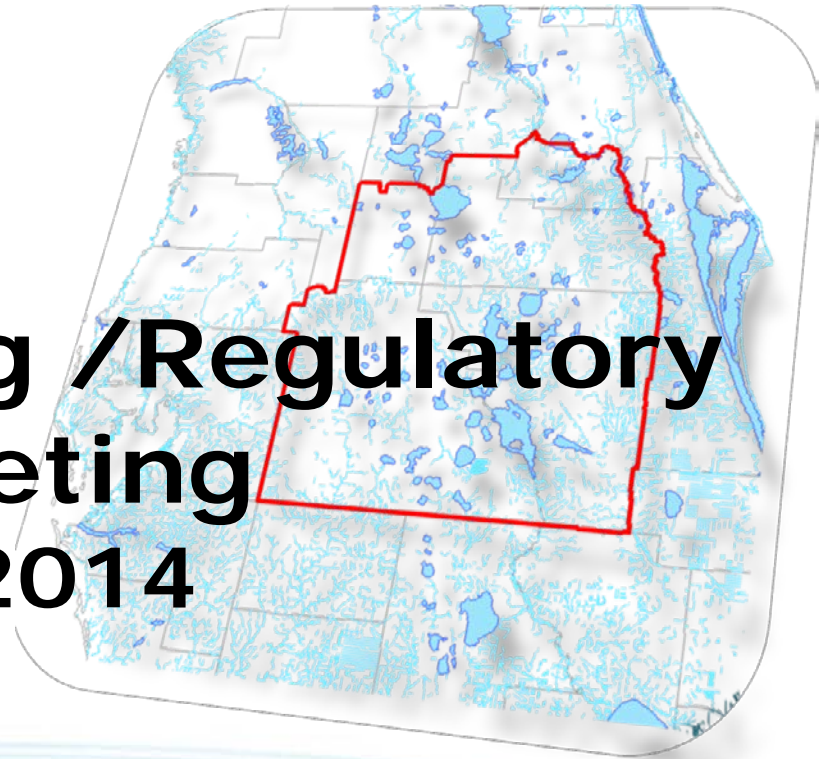


Recovery and Prevention Sub-Team Criteria Update

**Solutions Planning /Regulatory
Team Meeting
May 21, 2014**



Recovery and Prevention Criteria

Option 1

- Identify most impacted regional areas and regions with potential for future impacts
- Determine if existing programs will be sufficient or if additional strategies will be needed for prevention and/or recovery
- Evaluate all available data in the Upper Floridan aquifer
- Develop a sustainable aquifer level target range to correlate with impacted areas

Option 2

- Identify most impacted regional areas and regions with potential for future impacts
- Summarize existing projects and programs associated with recovery and protection of MFL and non-MFL water bodies
- Evaluate project scenarios to quantify their effects on MFL and non-MFL waterbodies using methods established in the water supply planning process
- Work with other sub-teams to initiate development of options for sustainable aquifer level target ranges and identify additional data requirements

Recovery and Prevention Criteria: Option 3

- Identify most impacted regional areas and regions with potential for future impacts
- Evaluate project scenarios to quantify their effects on MFL waterbodies using existing MFL measuring sticks established in the water supply planning process
- Evaluate project scenarios to quantify their effects on non-MFL waterbodies using statistical methods established in the water supply planning process
- Work with other sub-teams to initiate development of potential options for sustainable aquifer level target ranges and identify additional data requirements to assist in the implementation of the Solutions Phase.



Re-Naming Options

- Environmental Protection Sub-Team
- Protection and Restoration Sub-Team
- Environmental Evaluation Sub-Team