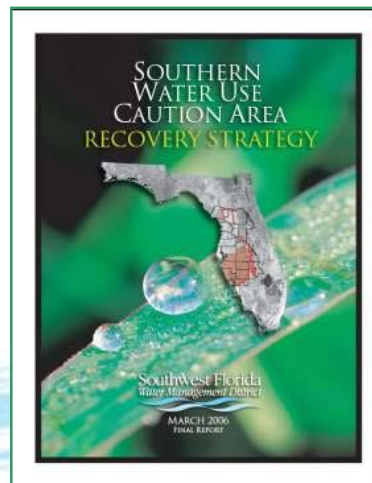


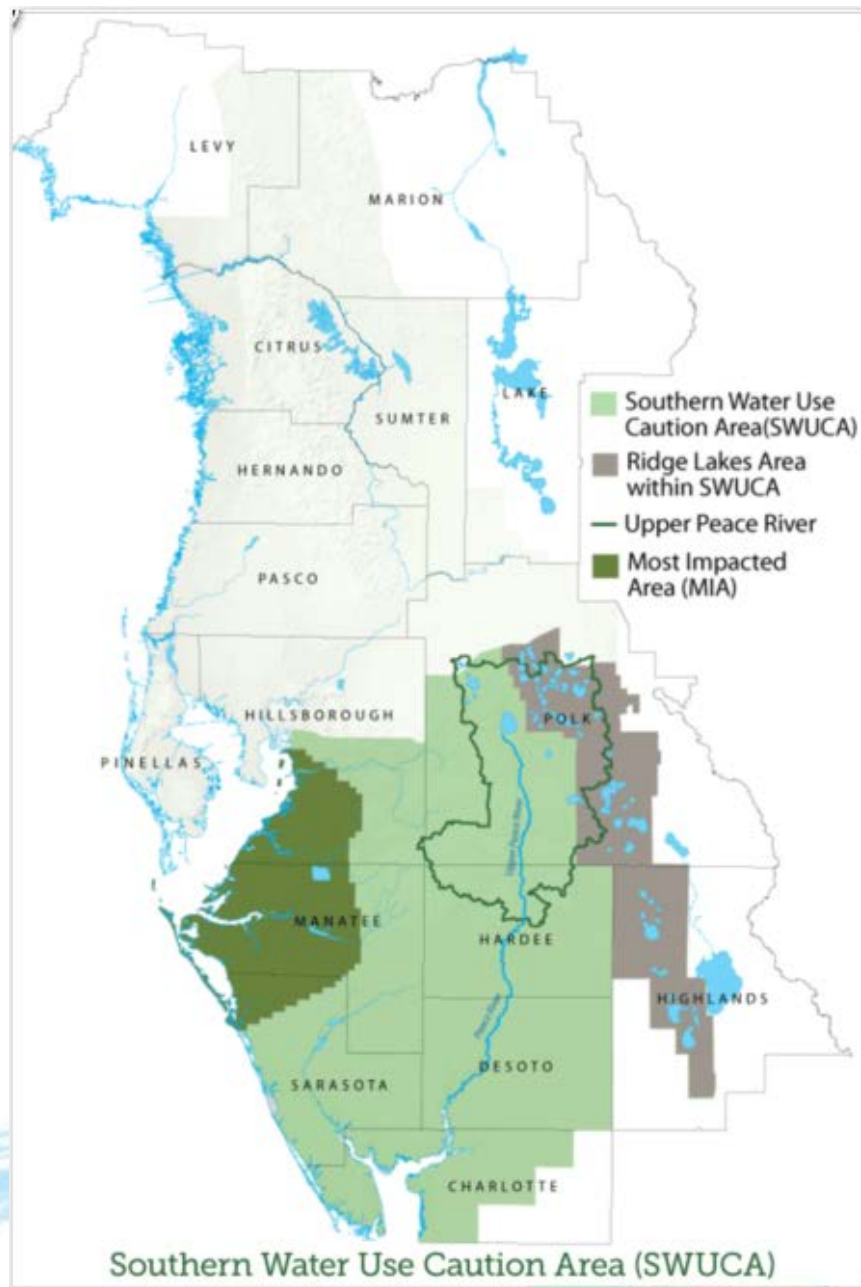
Southern Water Use Caution Area Regulatory Component

**CFWI Joint Solutions Planning Team/
Regulatory Team
May 21, 2014**



Presentation Outline

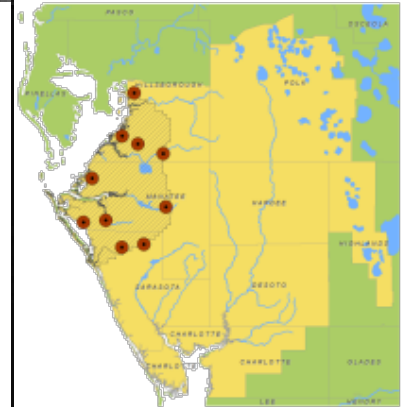
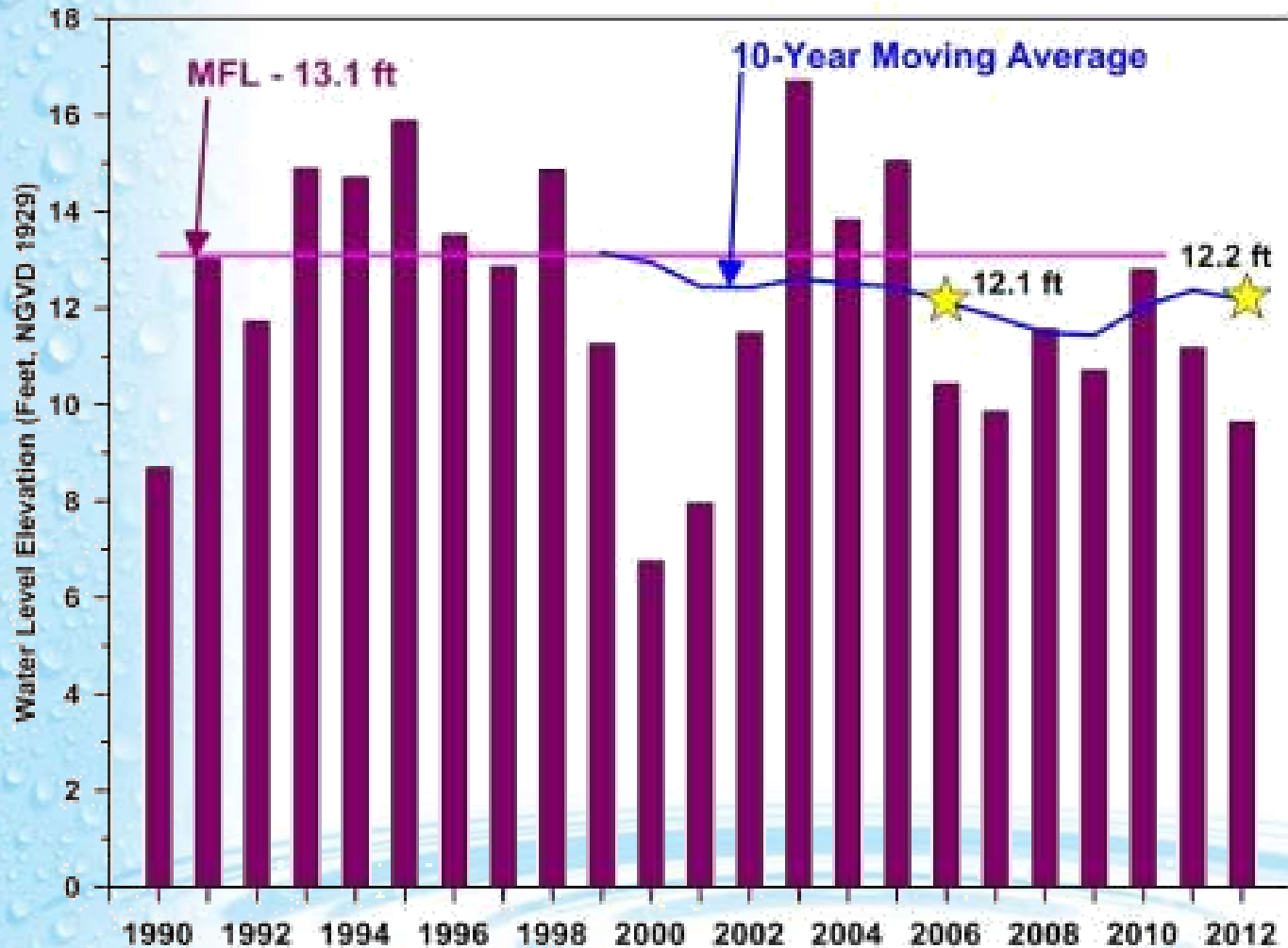
- SWUCA Overview
- SWUCA Rules
 - Adoption of Minimum Flows and Levels
 - Water Use Per Capita
 - Irrigation Quantities
 - Metering
 - Net Benefit
 - Other Tools



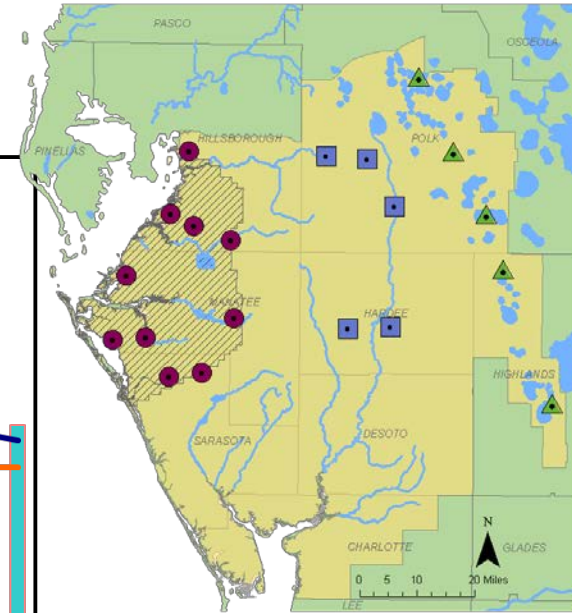
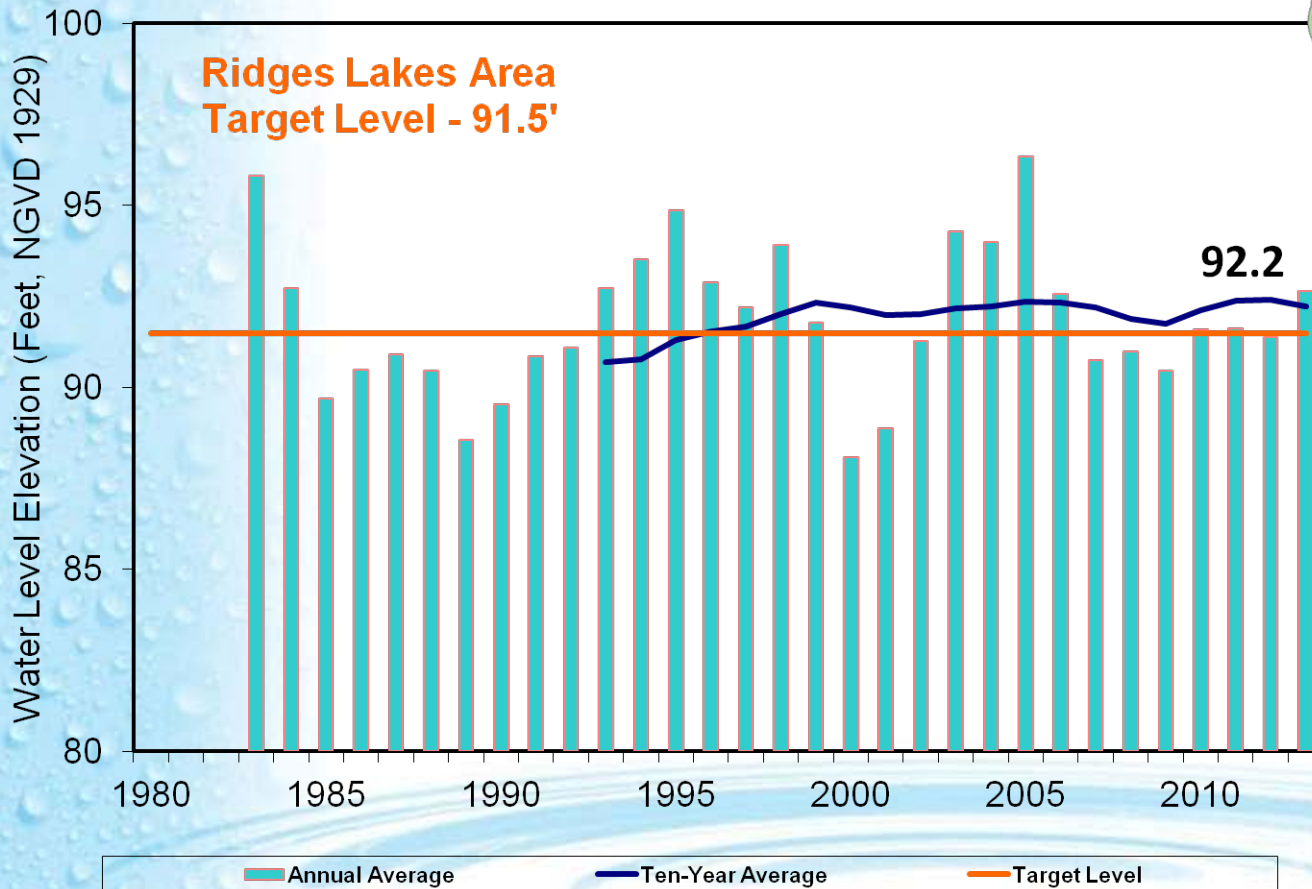
Six Major Elements of SWUCA Recovery Strategy

1. Regional Water Supply Planning.
2. **Use of Existing Rules.**
3. **Enhancements to Existing Rules.**
4. Financial Incentives to Develop AWS.
5. Develop Projects to Reestablish MFLs.
6. Resource Monitoring.

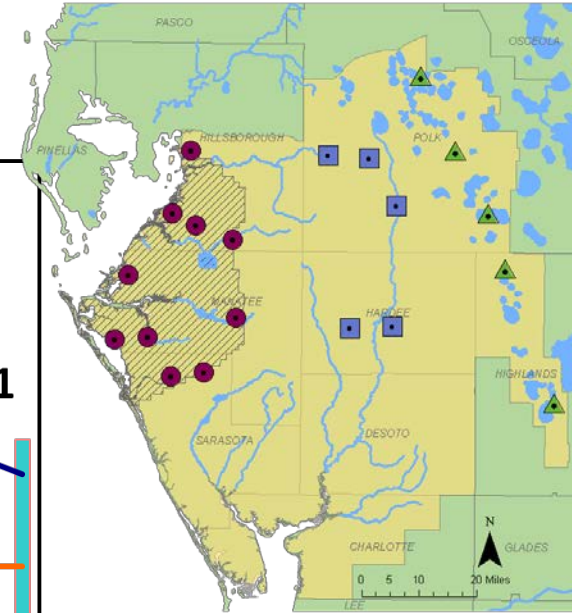
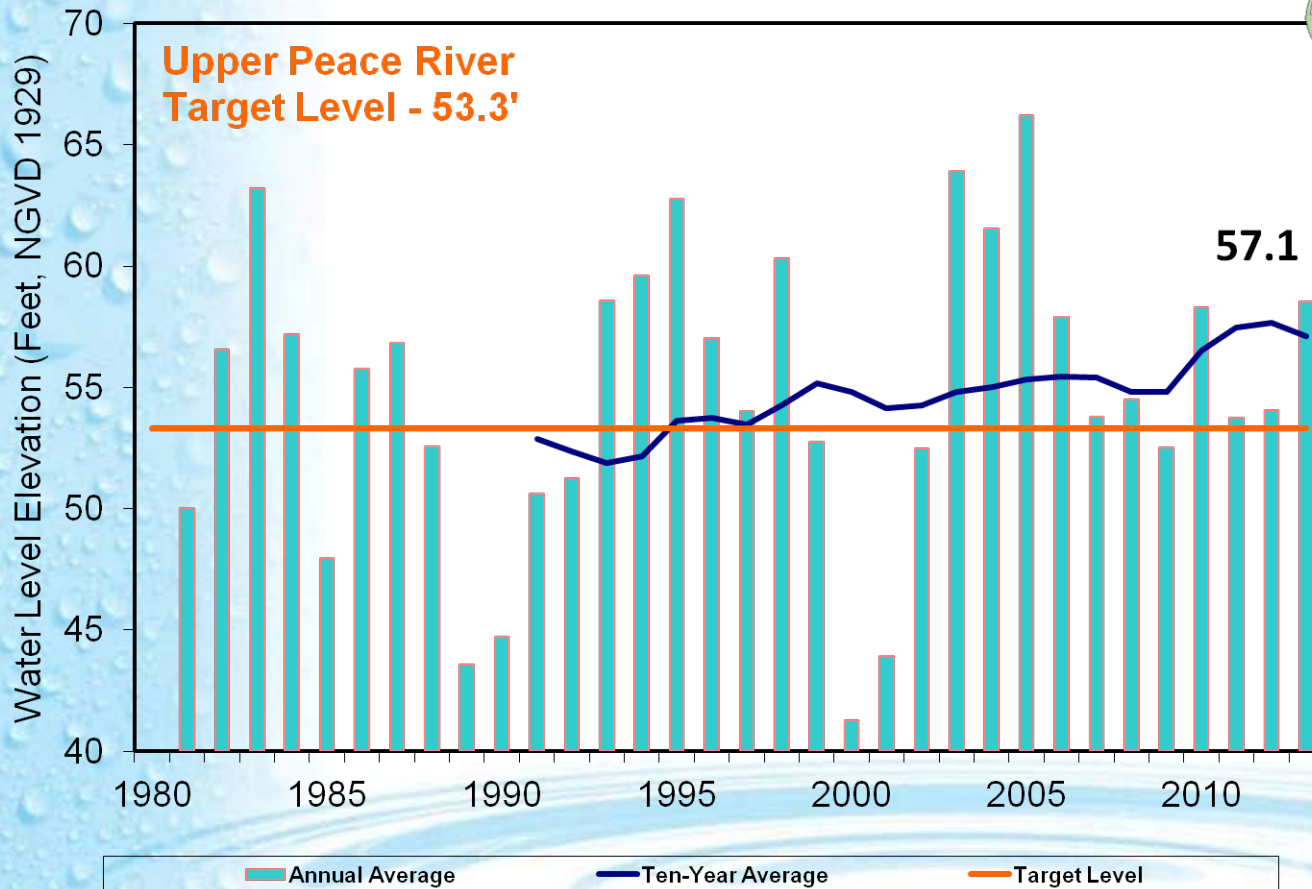
Achieve the SWIMAL by 2025



Ridge Lake Groundwater Levels



Upper Peace River Groundwater Levels



SWUCA Rules

- Chapter 40D-2 Consumptive Use of Water.
- 40D-2.801 Water Use Caution Areas
 - (3)(b) Southern Water Use Caution Area (SWUCA).
- Section 3.9.2 in Water Use Permit Applicant's Handbook Part B.

Water Use Per Capita

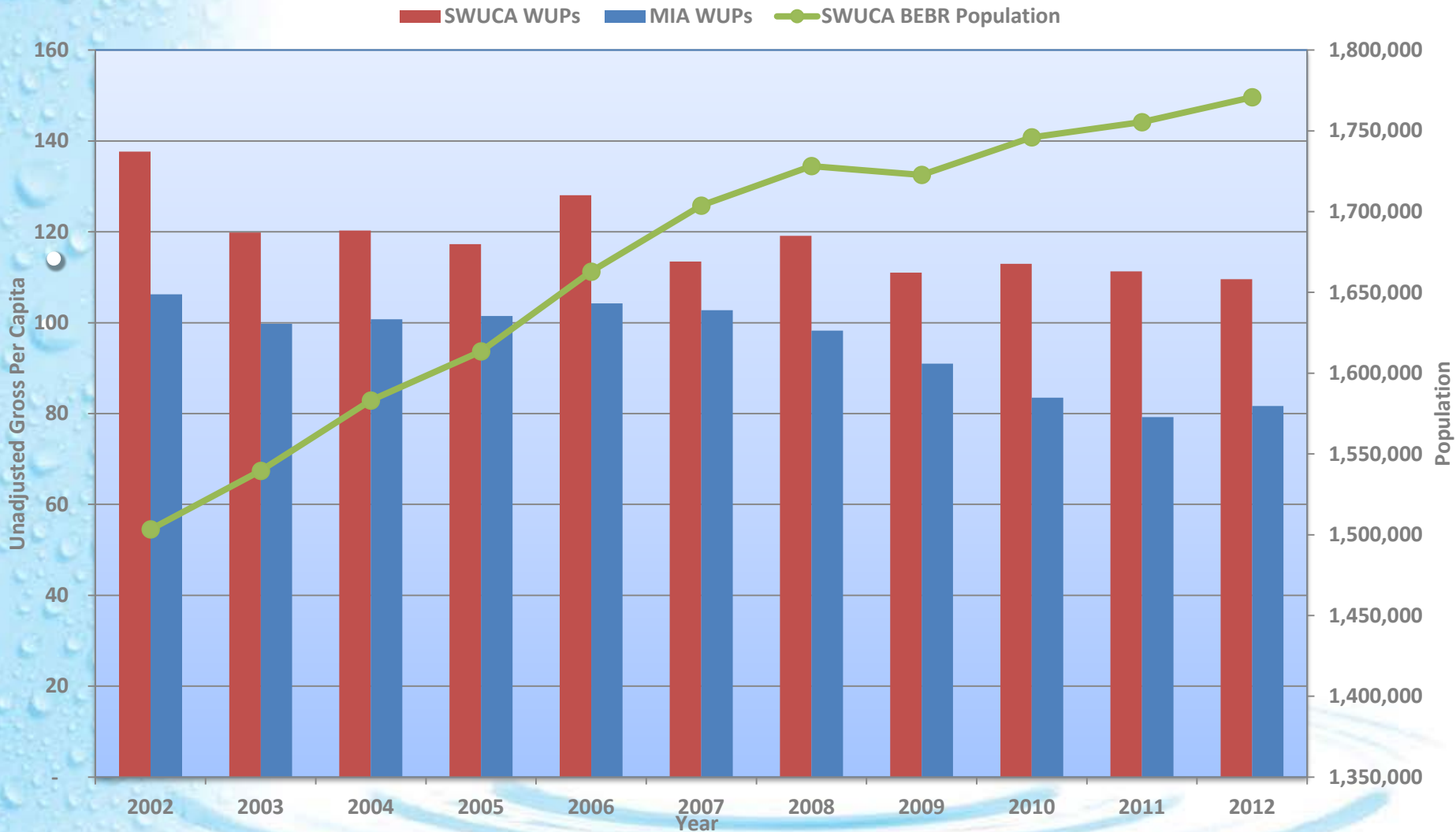
- Public supply Permittees required to have compliance per capita of 150 gpcd or below.
- Rules define per capita calculation and deductions.

$$\frac{(\text{WD} + \text{IM} - \text{EX-TL-SU-GC-EM-ST-RW})}{\text{FP}}$$

FP

- Annual reporting required.

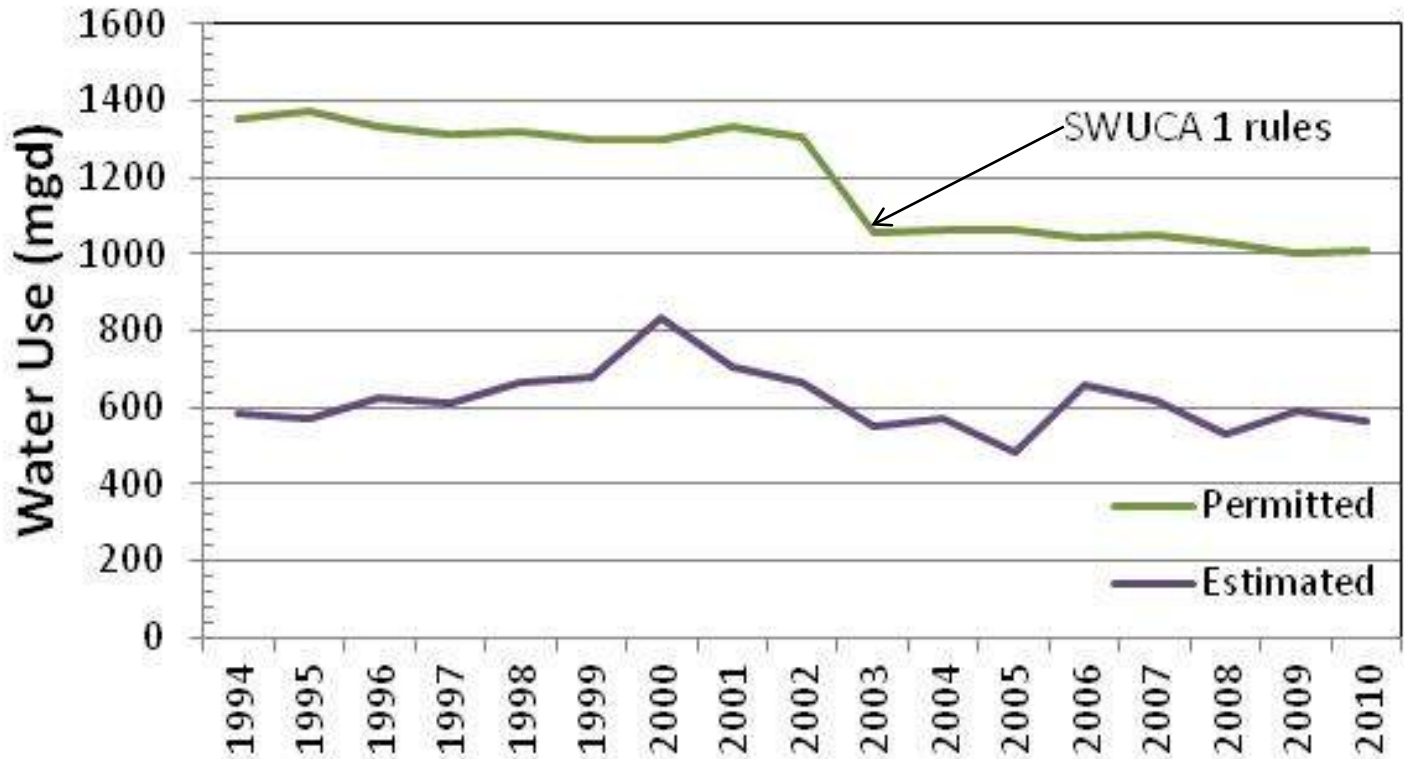
Per Capita



Irrigation Quantities

- Standard annual average – 5 in 10 rainfall year
- Drought annual average – 2 in 10 rainfall year
- Water conserving credit system
- Annual or seasonal crop reports are required
 - Crop name
 - Irrigation system
 - Acreage
 - Production Dates

SWUCA Groundwater Use



SWUCA Metering

- Required when standard annual average or drought quantities are 100,000 gpd or greater.
- Monthly reporting frequency.
- Purpose is to develop historical records, assess impacts and ensure compliance with permitted quantities.

Net Benefit

- Required when the following occurs:
 - Requests for new quantities of groundwater predicted to impact the SWIMAL, Upper Peace River and Ridge Lakes MFLs.
 - Change in use type.
- Must offset predicted impact of proposed withdrawal and provide positive effect equal to or exceeding 10% of predicted impact.

Net Benefit Options

- Mitigation Plus Recovery
- Use of Quantities Created by District Water Resource Development Projects
- Groundwater Replacement Credit

Net Benefit Option: Mitigation Plus Recovery

- Permanently retiring reasonable-beneficial, historically used quantity associated with one or more water use permits.
- Recharging the aquifer and withdrawing water for a net positive impact on the Upper Floridan aquifer potentiometric surface.
- Other actions.

Net Benefit Option: Use of Quantities Created by District Water Resource Development Projects

- Used if applicant has contributed to a District water resource development project and it resulted in the development of new quantities that exceed those needed for MFL recovery.
- Proposed withdrawal affects the same MFL associated with the project.
- Water quantity developed in excess of the MFL has been determined.
- Net Benefit quantities will not interfere with those reserved or already designated for water resource development.

Net Benefit Option: Groundwater Replacement Credits

- Incentive for water users to provide Permittees with alternative supplies – credit holder can use to provide Net Benefit to withdraw new quantities.
- Created when a supplier provides an alternative supply to another user to offset actual groundwater withdrawals by an existing WUP holder.
- Credit issued for an amount equal to percent of amount offset that was reasonable-beneficial and historically used:
 - Prior to January 1, 2000 this is 50% of offset
 - After January 1, 2000 equal to 90% of offset
- Receiver permit will be modified to place quantities on standby.

Other Regulatory Tools

- Self relocation:
 - Allows transfer of all used and unused reasonable-beneficial permitted quantities to another location owned by same Permittee.
 - Cannot increase impacts to MFLs and must meet all other permitting criteria.

Other Regulatory Tools

- Submittal of a water conservation by January 1, 2003 by all users not previously in a water use caution area.
- Irrigation system efficiency standards set at 75%
- Pasture irrigation limited to improved pasture and quantities provided for the three driest months.
- Aesthetic augmentation prohibited in SWUCA.

Questions

