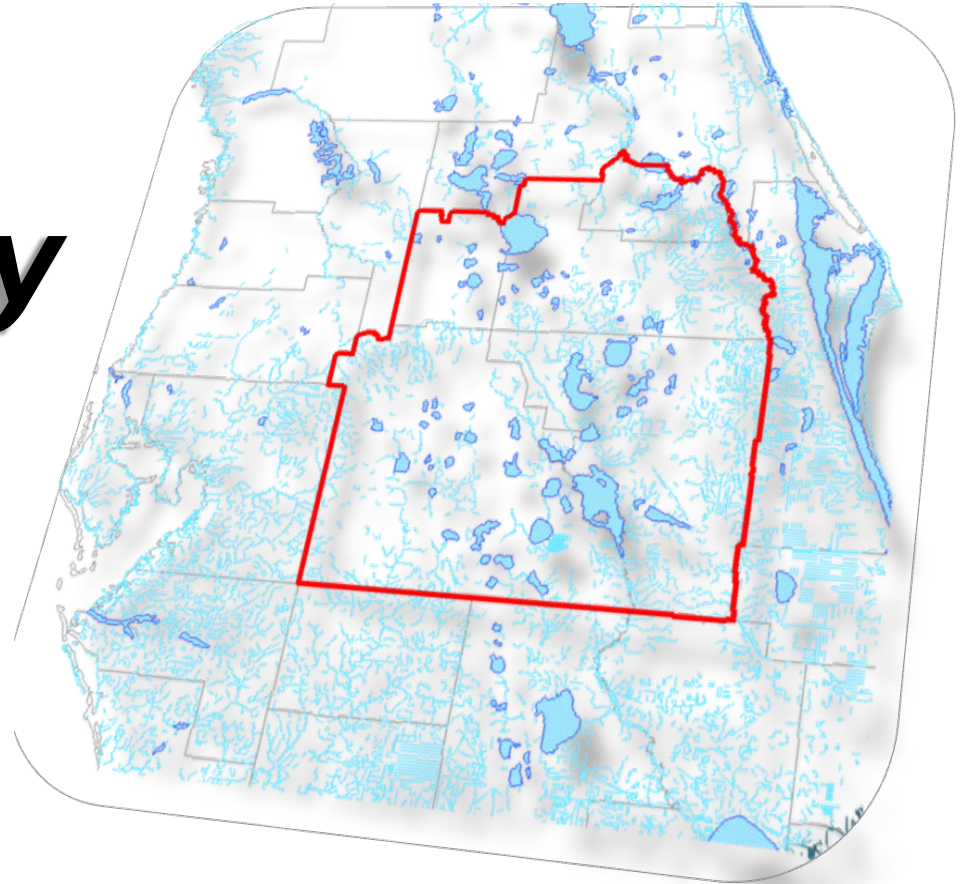


CFWI Steering Committee Meeting
June 27, 2014

Regulatory Team Update



Lennart J. Lindahl, P.E.
Assistant Executive Director
South Florida Water Management District

Regulatory Team

H4 - Review management activities

- Delivered to the Groundwater Subteam for modeling scenarios and data analysis:
 - Reclaimed water projects
 - Wellfield operational plans
 - Mitigation



Regulatory Team

Joint meeting with SPT on May 21st

- Request for near-term input:
 - Water use per capita
 - Water shortage criteria comparison
 - Aquifer recharge and impact offset sources and programs
 - Resource redistribution
 - Caution area example review
 - Interdistrict transfer of ground and / or surface water
 - Public interest (3rd prong test interpretation)

Regulatory Team

Joint meeting with SPT on May 21st

- Request for potential future input:
 - Environmental strategy for projects
(coordinated with Recovery/Prevention Team)
 - New MFL's and Reservations during CFWI implementation
 - Permittability of Solutions Planning Team projects

Regulatory Team

Water Use Per Capita - the average daily water use per person measured in gallons per capita per day (gpcd).

Water Use ÷ Population = Per Capita

- Factors that affect per capita:
 - Permanent / Seasonal Population
 - Demographics
 - Irrigation
 - Commercial / Industrial Use

Regulatory Team

Water Use Per Capita - the average daily water use per person measured in gallons per capita per day (gpcd).

Water Use ÷ Population = Per Capita

- Raw Withdrawals
- Finished Water
- Self-Supply
- Treatment Losses
- Bulk Sales
- Bulk Purchases
- Delivery Losses
- Permanent
- Seasonal
- Temporary
- Commuters
- Regional Water Supply Plans
- Consumptive Use Permitting
- FDEP Reporting
- Conservation
- Public Communication
- Research

Regulatory Team

Water Use Per Capita

- FDEP Guidance on Per Capita: Uniform Definitions and Performance Measures (March 3, 2008)
- Developed in coordination with WMDs
- Acknowledged variations needed for particular purposes such as:
 - Regulation
 - Demand Projections
 - Resource Assessments

Regulatory Team

Water Use Per Capita

- CFWI Regional Water Supply Plan
 - Gross (Raw) Per Capita
 - Includes all uses within a utility:

Total Raw Water Use

Total Estimated Permanent Population

- Consistent calculation throughout the RWSP
- Demand projections based on average from 2006 – 2010 where available

Regulatory Team

Water Use Per Capita - RWSP

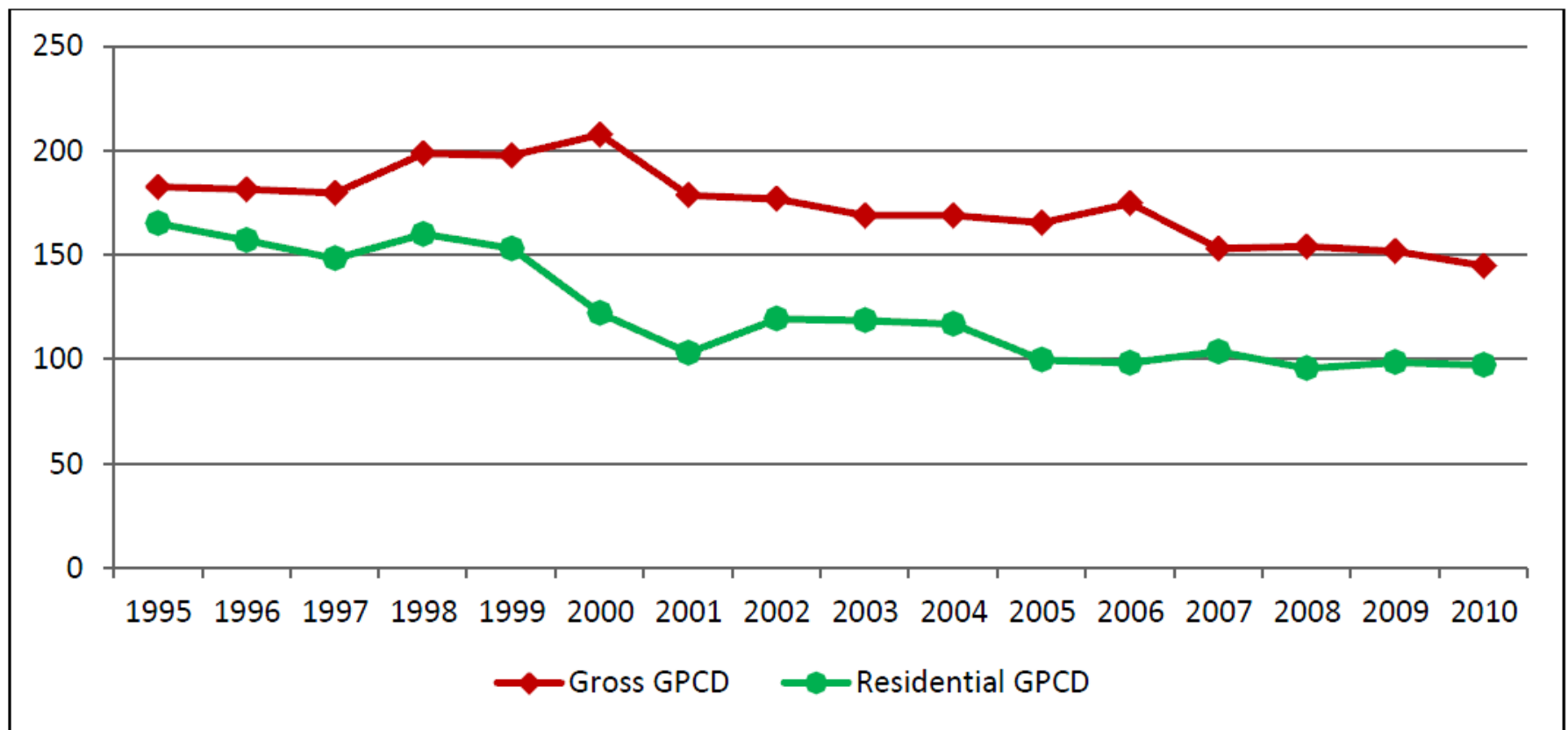


Figure 11. Gallons per capita per day (GPCD) water use in the CFWI Planning Area.

Regulatory Team

Water Use Per Capita

- **Consumptive Use Permitting**
 - Each District has criteria to calculate per capita use rates and determine permit allocations.
 - Consistent factors include:
 - Population projections
 - Historic use
 - Treatment and distribution efficiency
 - Conservation
 - Calculated on an applicant-by-applicant basis
 - Regional-specific rules such as SWUCA

Regulatory Team

Water Use Per Capita

■ Reporting to FDEP

- All WMDs follow the March 3, 2008 Guidance
- Uniform Gross Per Capita

$$\frac{\text{Utility Service Area Finished Water Use}}{\text{Utility Service Area Residential Population}^*}$$

■ Uniform Residential Per Capita

$$\frac{\text{Utility Service Area Finished Water Used by Dwelling Units}}{\text{Utility Service Area Residential Population}^*}$$

* Estimates relate to permanent population

Regulatory Team

Water Use Per Capita

- Data Submitted to FDEP in January 2014

Water Management District	Generally Follows FDEP 2008 Guidance Memo?	Uniform Gross Per Capita (gpcd) *	Uniform Residential Per Capita (gpcd) *
SJRWMD	Yes	131	103
SFWMD	Yes	133	85
SWFWMD	Yes	105	71

* District-wide per capita estimates - not limited to CFWI geographic area

Regulatory Team

Upcoming

- Additional progress on other priority topics
- Joint meeting with Solutions Planning Team



Thank you.

