

138. St. Johns River Near Yankee Lake Project – Phase II

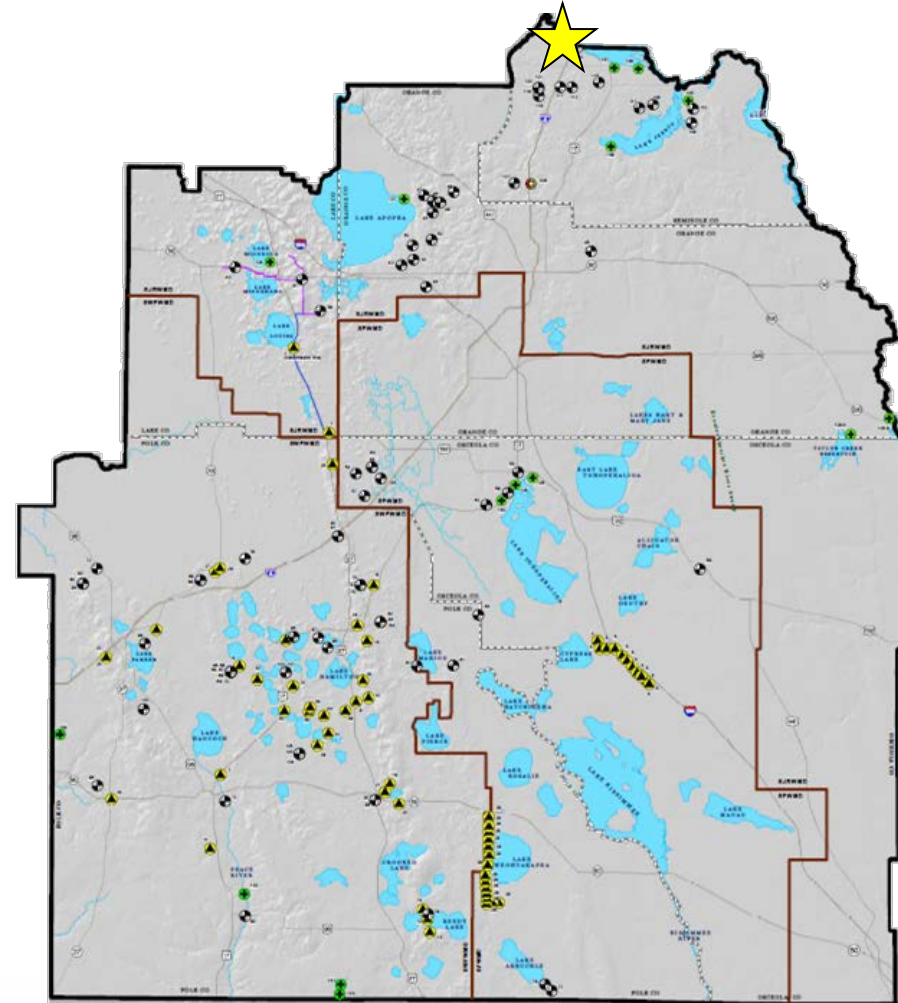
PWS – 4.5-31.7 mgd

Purpose: Managed withdrawal of surface water from the St. Johns River (SJR) for potable consumption to meet 2035 demands.

Cost Estimates: *not from CE Tool*

- ❖ Construction Phase I: \$54.2 M
- ❖ Already constructed – 10 mgd / 5.5 mgd permitted
- ❖ Construction Phase II: \$53.3 M (4.5 mgd) to \$245.7 M (31.7 mgd)
- ❖ Operation and maintenance Phase II:
- ❖ Unit production cost:

Water Resource Constraints: Compliance with adopted and proposed MFLs

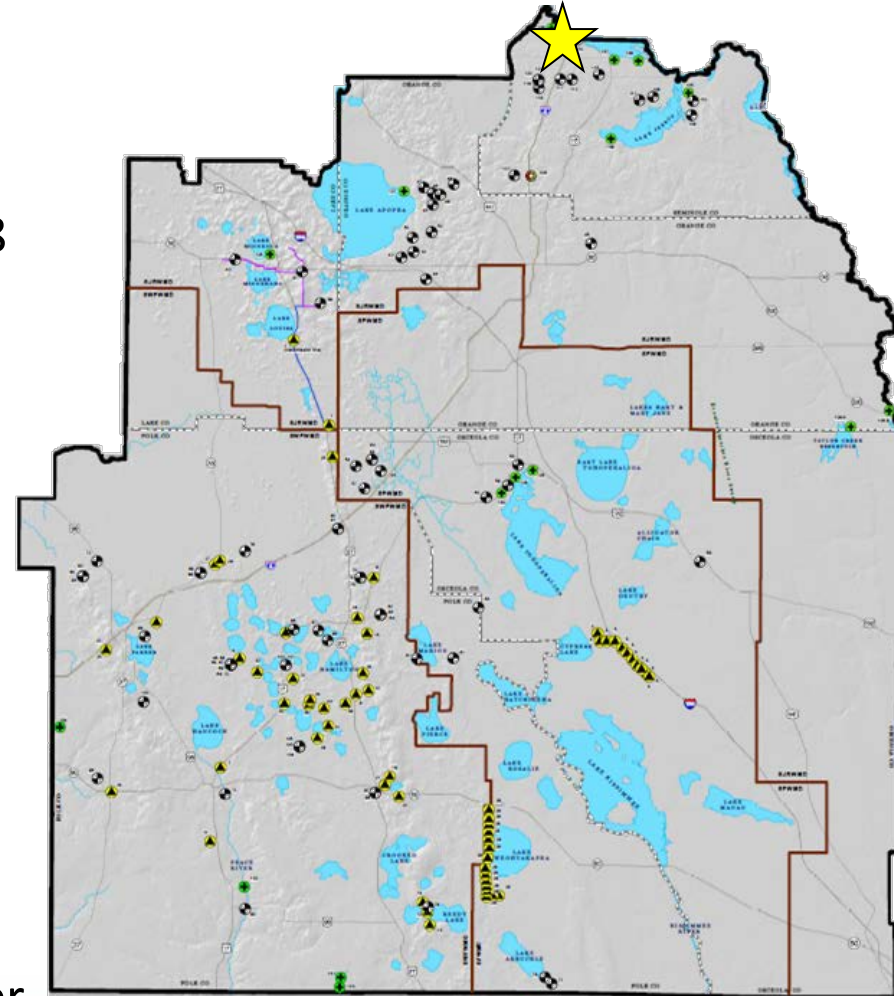


138. St. Johns River Near Yankee Lake Project – Phase II

PWS – 4.5-31.7 mgd

Partners & Governance: Proposed governance & partnership developed in 2008 - included: Eustis, Mount Dora, OUC, Aqua, Sanford, Longwood, DeLand, Winter Park, Oviedo, Apopka, Orange County, Maitland, Volusia County, Deltona and Lake Mary. Currently on hold due to reduced demand and pending the identification of specific regional partners to help this project realize an appropriate economy of scale.

Feasibility: Project is feasible; no limitations due to rule inconsistencies have been identified. Included in SJRWMD District Water Supply Plan and examined through the WSIS

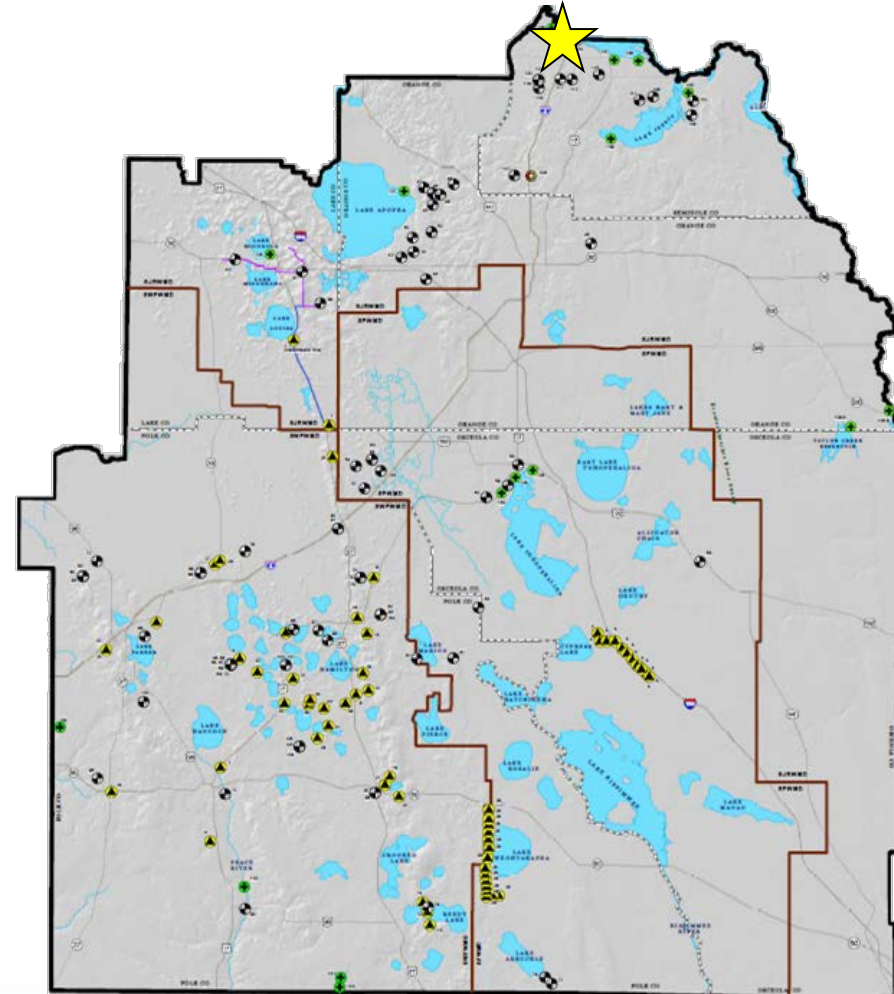


138. St. Johns River Near Yankee Lake Project – Phase II

PWS – 4.5-31.7 mgd

Funding Options: Project partners, customers, State of Florida Water Protection and Sustainability Program, WMD ad valorem tax revenues, new development impact fees, Florida Forever Trust Fund, federal revenues & private investments.

Implementation Schedule: Phase I of the Yankee Lake Water Supply Project was placed into operation in December 2011. Phase II could be implemented within the next 10 years.



Project Evaluation Status:
80% Complete