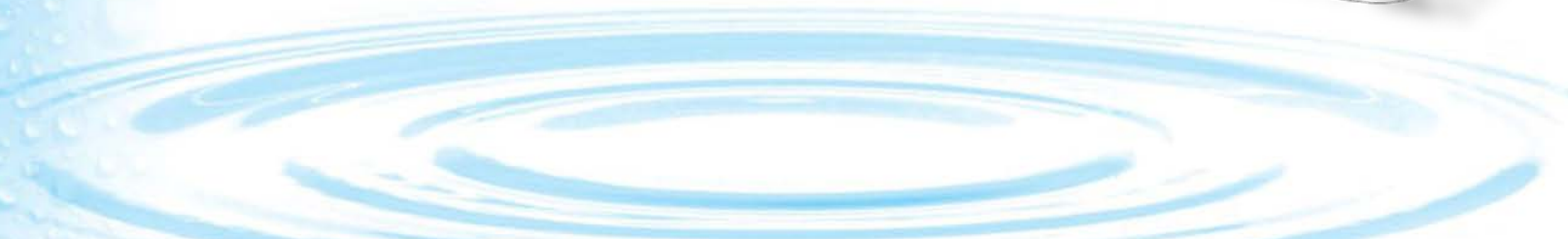
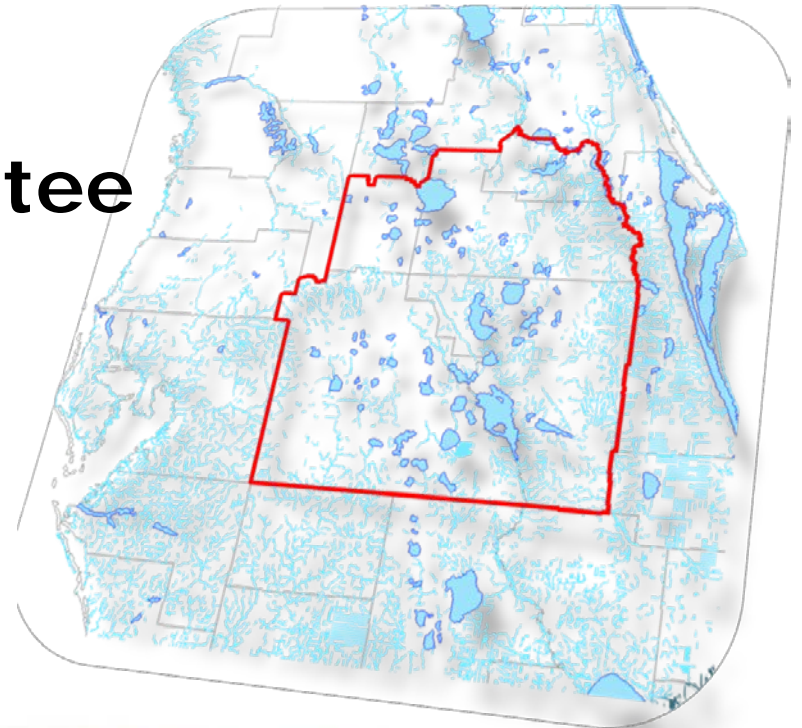


Environmental Evaluation Sub-Team Update

**CFWI Steering Committee
December 19, 2014**

Presented by: Dean Powell



Tasks completed

- **Task 1**: Review and assess areas of environmental sensitivity
 - Completed – map produced ✓
- **Task 2**: Evaluate project locations relative to areas of environmental sensitivity
 - Completed – map produced ✓

Task 3: Work with the MFLRT to evaluate projects for MFL water body impacts

- MFL “measuring sticks” used in RWSP applied to all modeled scenarios
 - “freeboard analysis”
- Evaluation of all model scenarios now complete ✓

Task 4: Work with the EMT to evaluate projects for non-MFL water body impacts

- Non-MFL wetland “Measuring sticks” used in RWSP applied to all modeled scenarios
 - EMT developed probability-based approach developed using field data
 - A computer program developed to post process multiple model runs more quickly
- Evaluation of all model scenarios now complete ✓
- Draft Chapter 5 submitted 12/17 ✓

Round 1 Modeling Results

- 4 Scenarios
 - Large, multi-jurisdictional Groundwater projects
 - As expected, additional groundwater withdrawals may increase impacts on MFLs and non-MFL wetlands
 - Implementation may require mitigation or offsets by implementation of Round 2 scenarios

Round 2 Modeling Results

- 5 Scenarios
 - Concepts designed to improve environmental performance and test management strategies
- Most promising concepts:
 - Replacing groundwater withdrawals with AWS
 - Moving withdrawals from UFA to LFA
 - Moving withdrawals away from most susceptible areas
 - Targeted Recharge

The image features a vertical column of water droplets on the left side, transitioning into a series of concentric ripples at the bottom. The background is a light, clean white.

Questions?