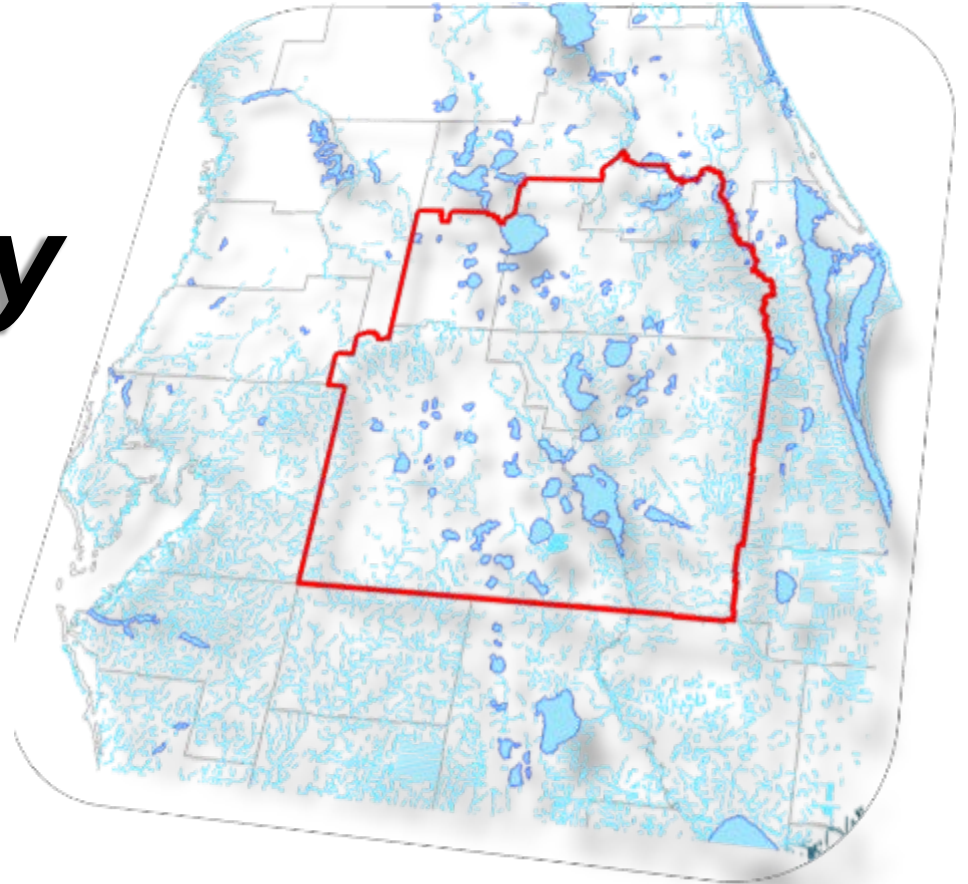


CFWI Steering Committee Meeting
January 29, 2016

Regulatory Team Update



Lennart J. Lindahl, P.E.
Regulatory Team Leader

Regulatory Topics

- **Following Dec 2013 FDEP Guidance Memo**
 - WMD coordination on pending applications
 - Review of permit duration
 - Water conservation criteria
- **Reporting consumptive use data**
 - Updated list of pending consumptive use permit applications
 - Available on www.cfwiwater.com

Regulatory Subgroups

Areas of focus:

■ SJRWMD topics

- Environmental resource permitting / consumptive use permitting concurrency
- Variance process for soil moisture sensors for landscape irrigation

■ CFWI Consistency

- Priority topics identified and subgroups created
- Subgroup leads identified
- Working closely with FDEP on process and scheduling to meet legislative requirements and deadlines

CFWI Consistency

- **Conditions for issuance**
SJRWMD - Mary Ellen Winkler
- **Uniform definition of harm**
FDEP - Janet Llewellyn
- **Uniform demand calculation by use class**
Utility - Krystal Azzarella & Terry McCue
Agriculture - Steve Lamb (FDACS)
- **Uniform conservation requirements by use class**
Utility - Christine Russell & Mike Sweeney
Agriculture - Steve Lamb (FDACS)
- **Use of MFLs and reservations in the permitting process**
FDEP - Janet Llewellyn
- **Single permitting model tool**
SFWMD - Steven Memberg
- **Permitting thresholds**
SFWMD - Steven Memberg
- **Permit compliance**
SWFWMD - Amy Brennan
- **Addressing potential impacts outside of the CFWI boundary**
SJRWMD - Mary Ellen Winkler

Regulatory Team

Upcoming

- Continued progress on regulatory topics
- Meetings set for 2016



Roseate spoonbill, ibis, and egrets forage in a drying pool in the Phase I restoration area floodplain (December 10, 2015)