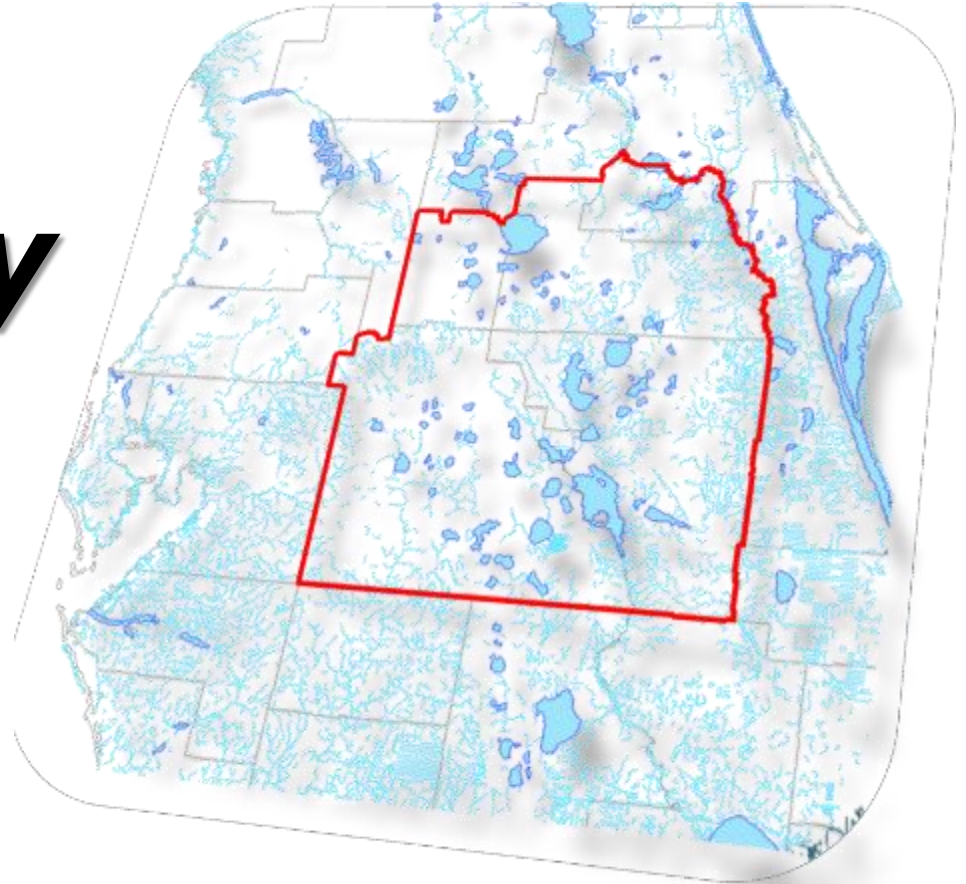


**CFWI Steering Committee Meeting  
July 22, 2016**

***Regulatory  
Team  
Update***



**Steven J. Memberg, P.G.**  
South Florida Water Management District

# Regulatory Topics

## ■ **Following Dec 2013 FDEP Guidance Memo**

- WMD coordination on pending applications
- Review of permit duration
- Water conservation criteria

## ■ **Reporting consumptive use data**

- Updated list of pending applications and issued consumptive use permits
- Available on [www.cfwewater.com](http://www.cfwewater.com)

# CFWI Consistency

## H2: Regulatory and statutory options

Identify options for uniform regulations and statutory changes as needed.

- Determine conceptual approach for rule options for each topic
  - June 1, 2016
- Provide initial draft rule language options for each topic
  - October 1, 2016
- Publish Notice of Rule Development for CFWI rules (DEP)
  - December 31, 2016

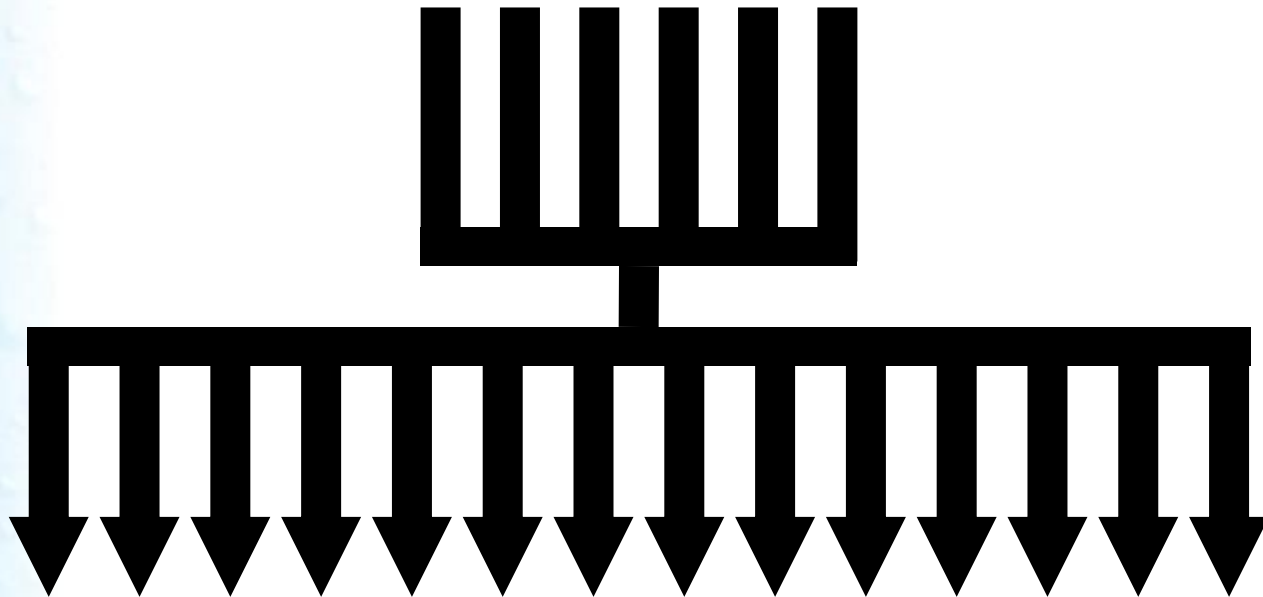
# SB 552 – Uniform Rules

## s. 373.0465(2)(d) contains 6 requirements

1. A single, uniform definition of the term “harmful to the water resources” consistent with the term’s usage in s. 373.219;
2. A single method for calculating residential per capita water use;
3. A single process for permit reviews;
4. A single, consistent process, as appropriate, to set minimum flows and minimum water levels and water reservations
5. A goal for residential per capita water use for each consumptive use permit
6. An annual conservation goal for each consumptive use permit consistent with the regional water supply plan

# Regulatory Team Implementation

**6 SB 552 Requirements**



**14 Topic Groups**

# Reg Team Topic Groups

- **Conditions for issuance**
  - SJRWMD - Mary Ellen Winkler
- **Uniform definition of harm**
  - FDEP – Kristine Morris
- **Uniform demand calculations**
  - Utility - Krystal Azzarella & Terry McCue
  - Agriculture – Rebecca Elliott (FDACS)
  - Industrial/Commercial – Eric Olsen
- **Landscape irrigation restrictions**
  - SJRWMD - Mary Ellen Winkler
- **Addressing potential impacts outside of the CFWI boundary**
  - SJRWMD - Mary Ellen Winkler
- **Uniform conservation requirements**
  - Utility - Christine Russell & Mike Sweeney
  - Agriculture - Rebecca Elliott (FDACS)
  - Industrial/Commercial – Eric Olsen
- **Use of MFLs and reservations in the permitting process**
  - FDEP - Kristine Morris
- **Single permitting model tool**
  - SFWMD - Steven Memberg
- **Permitting thresholds**
  - SFWMD - Steven Memberg
- **Permit conditions**
  - SWFWMD - Amy Brennan



# Topic Group Coordination

## Working with of CFWI Technical Teams to accomplish our goals:

- Hydrologic Analysis Team
  - Modeling tools
  - Permitting thresholds
- Environmental Measures Team
  - Definition of harmful to the water resources
  - MFLs in the permitting process
- Conservation Team
  - Uniform conservation requirements
  - Landscape irrigation restrictions



# Regulatory Team

## Upcoming

- Continued progress on regulatory topics
- Face to face meeting set for August 19<sup>th</sup>



Lake Maitland