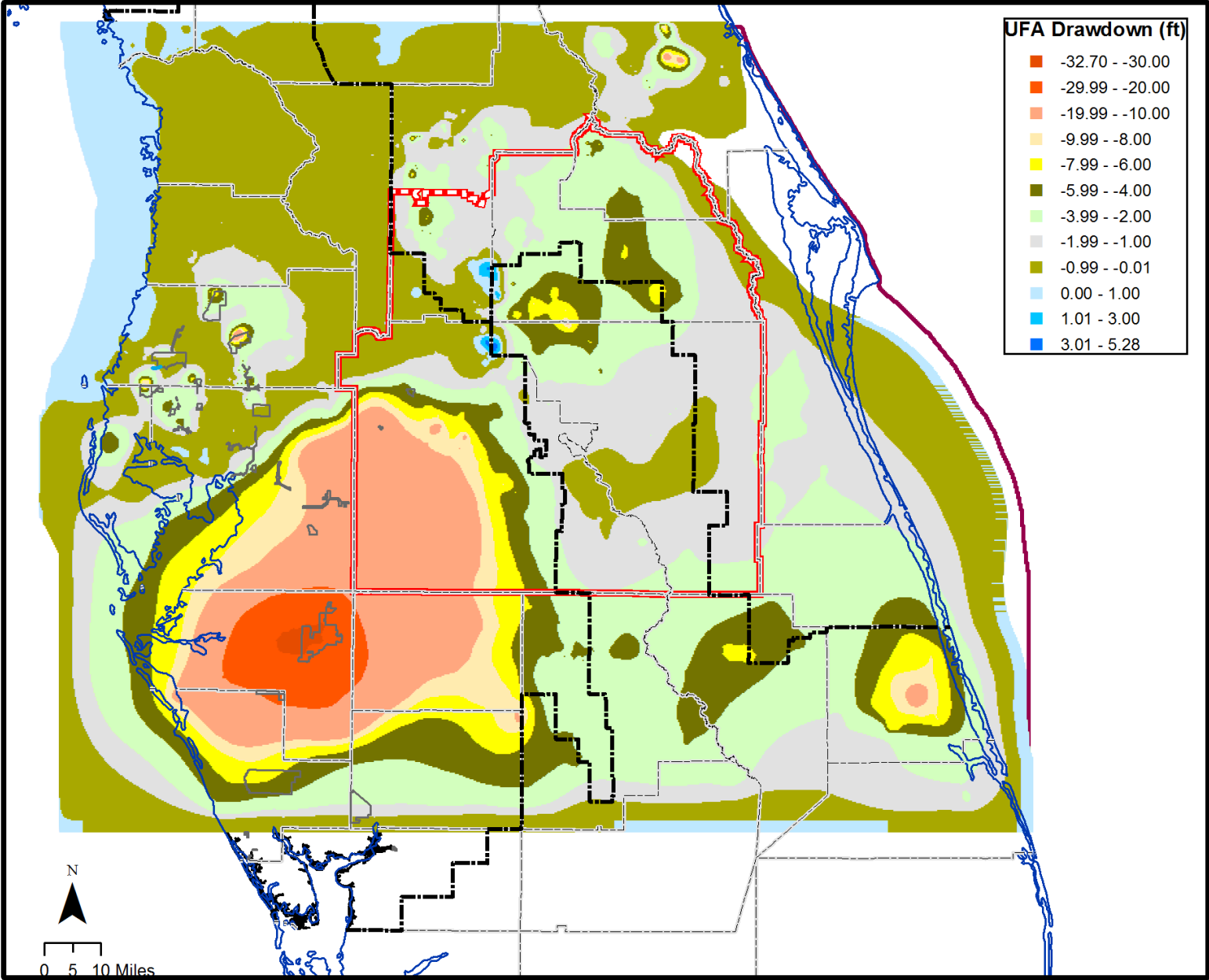


Extrapolated Total Head Change in the UFA (Avon Park) from Zero Pumping Condition to Avg 2010-2014 conditions



2003-2014 Period				extrpolated historical (50% x 2)	extrpolated historical (50% x 2)
	Base	25%	50%	flow change (cfs)	flow change (%)
LITHIA SPRING MAJOR	33.29	38.48	44.40	-22.23	-40.0
BUCKHORN MAIN SPRING	12.15	13.49	15.02	-5.73	-32.0
SULPHUR SPRING (HILLSBOROUGH)	35.35	35.29	35.82	-0.93	-2.6
CRYSTAL MAIN SPRING (PASCO)	46.41	46.64	47.84	-2.86	-5.8
WEEKI WACHEE SPRING	167.24	167.29	170.54	-6.61	-3.8
CHASSAHOWITZKA SPRING MAIN	59.16	59.22	59.99	-1.66	-2.7
HOMOSASSA SPRING #1	84.37	84.37	84.74	-0.74	-0.9
GUM SPRING MAIN	66.30	65.76	67.24	-1.88	-2.8
RAINBOW SPRING #1	73.88	73.88	73.92	-0.06	-0.1
APOPKA SPRING	24.41	24.47	26.48	-4.14	-14.5
SANLANDO SPRINGS	20.05	20.63	22.02	-3.93	-16.4
STARBUCK SPRING	12.65	12.93	13.59	-1.90	-13.0
WEKIWA SPRING (ORANGE)	64.79	65.57	67.59	-5.59	-7.9
BUGG SPRING (LAKE)	9.70	10.02	10.59	-1.78	-15.5
ROCK SPRINGS (ORANGE)	52.03	52.78	54.87	-5.69	-9.9
VOLUSIA BLUE SPRING	129.69	132.51	137.76	-16.13	-11.1
ALEXANDER SPRING	99.06	99.08	99.14	-0.17	-0.2
WEKIVA FALLS RESORT	12.36	12.66	13.19	-1.66	-11.9