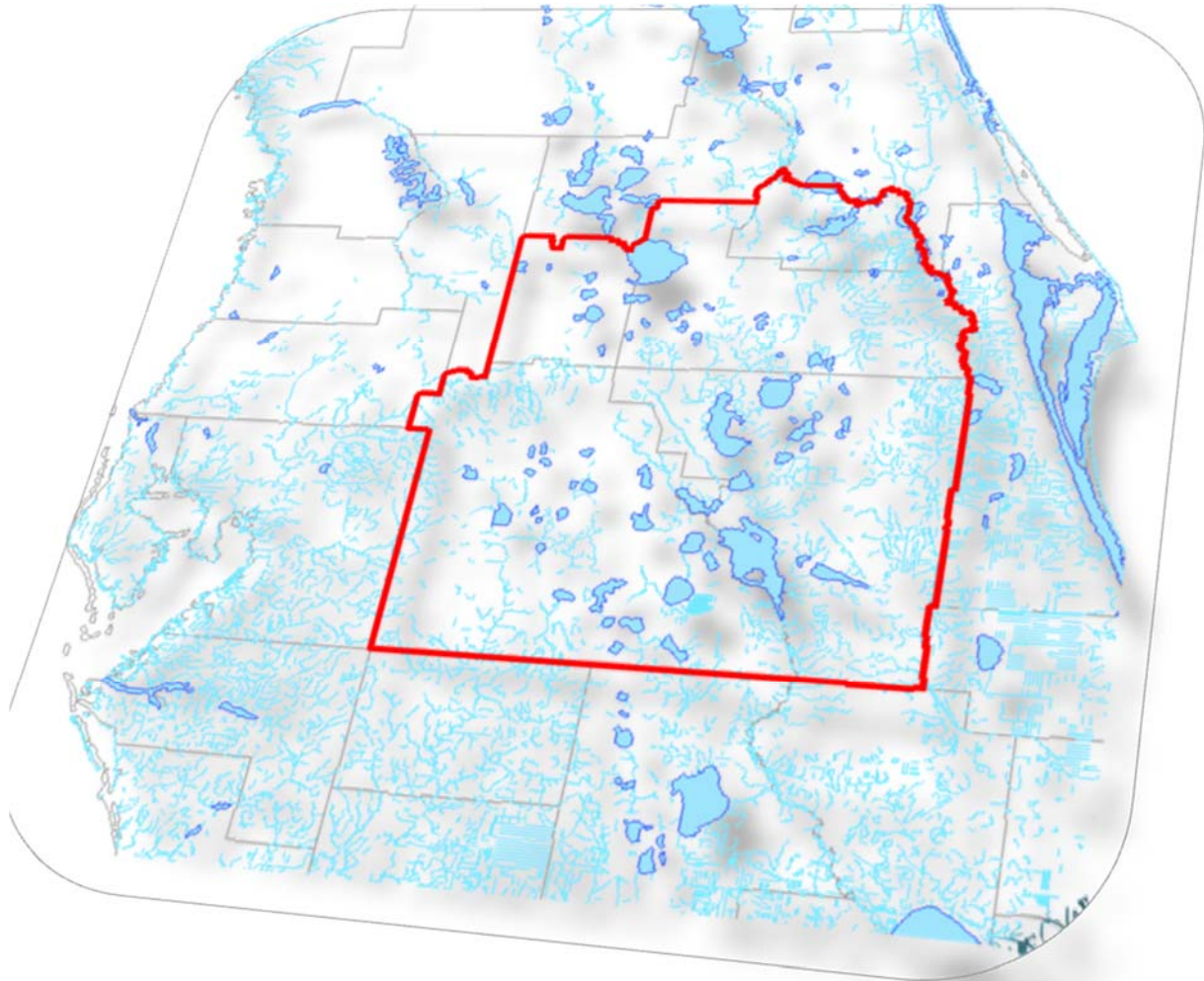


CENTRAL FLORIDA WATER INITIATIVE



... A collaborative regional water supply endeavor to protect, conserve and restore our water resources

The CFWI document is a constantly evolving document. It is intended to describe the collaborative process being implemented in Central Florida. As such, this version reflects the process underway as of the date shown. Through adaptive management principles it will be revised as appropriate under direction of the CFWI Steering Committee.

CENTRAL FLORIDA WATER INITIATIVE GUIDING DOCUMENT

Preface

To provide for more effective, consistent water resource planning, development and management, a new Central Florida Water Initiative (CFWI) is being developed. This new process replaces the schedule and activities established by the 2006 CFCA Action Plan but will incorporate many of the findings and activities of the previous efforts. The development of new rules, along with a timetable for rulemaking, will be deferred until the completion of the Recovery and Prevention Strategies described in this new initiative.

Background

The St. Johns River Water Management District (SJRWMD), South Florida Water Management District (SFWMD) and Southwest Florida Water Management District (SWFWMD) agreed in 2006 to a Central Florida Coordination Area (CFCA) Action Plan (Action Plan) to address the near-term and long-term development of water supplies in the central Florida region, including southern Lake, Orange, Osceola, Seminole and Polk counties.

In Phase I of the Action Plan, a framework was established to deal with the short-term water resource issues. Phase I concluded with interim water use regulation limiting groundwater withdrawals to projected 2013 demands and requiring development of alternative water supplies (AWS) for future needs. Because the SWFWMD had already adopted rules for its Southern Water Use Caution Area (SWUCA) that were as restrictive, if not more restrictive, as the CFCA rules, and Polk County has portions in both areas, only the portion of Polk County that is outside the SWUCA was subject to the CFCA rules (see Figure #1 in the Appendix). The interim CFCA rules sunset on December 31, 2012, and further rules specific to the CFCA area have not been promulgated to date for the reasons discussed below under “New Direction”. Each district currently relies on their existing water use regulatory criteria in review of consumptive use permit applications.

The Phase II process of the Action Plan was undertaken in 2009. Its initial objective was to establish new rules prior to the sunset date and to implement a long-term approach to water resource management in central Florida. This phase involved coordinated activities on a variety of issues including: regional water supply planning; investigations and development of traditional and Alternative Water Supply projects; assessment of environmental impacts and groundwater sustainability; and development of water use rules and permitting criteria. All the activities attempted to maximize and incorporate local government and public input.

New Direction

The primary planning tool for the Phase II process was the development and calibration of the necessary hydrologic models to determine the sustainability of the groundwater supplies. However, because of the complexity of the effort and the desire for consensus among the stakeholders, including the water management districts, the Phase II effort to meet the mandatory rulemaking deadlines prior to the interim rule sunset was not possible. Furthermore, because of the severe economic slowdown in Central Florida, the need for and use of the permitted 2013 water demands has been delayed at least two years (probably more) into the future so the need to fast track certain activities was no longer critical.

Rather than force decisions to be made with incomplete technical information to comply with the December 31, 2012, sunset date, the Executive Directors of the affected water management districts, in consultation with the public water suppliers, suspended the Phase II process until a more collaborative approach to resolving the technical issues could be developed. The need for a coordinated effort to protect, restore and maintain the water resources of Central Florida remains a priority.

To address the limitations of the 2006 Action Plan yet still fulfill the overarching water resource objectives in Central Florida outlined in that plan, a new Collaborative Process has been created. In addition to revising the implementation date for the new rules, Guiding Principles and Collaborative Process Goals have been established, and an executive level Steering Committee has been formed to direct the coordinated effort of the Central Florida Water Initiative.

The Collaborative Process

The new process to ensure more effective, consistent water resource development and management is called the Central Florida Water Initiative (CFWI).

Central Florida Water Initiative Guiding Principles

1. Identify the sustainable quantities of traditional groundwater sources available for water supply that can be used without causing unacceptable harm to the water resources and associated natural systems.
2. Develop strategies to meet water demands that are in excess of the sustainable yield of existing traditional groundwater sources. Strategies should include optimizing the use of existing groundwater sources, implementing demand management, and identifying alternative water supplies that can be permitted and will be implemented as demands approach the sustainable yield of existing sources.
3. Establish consistent rules and regulations for the three water management districts that meet the Collaborative Process Goals and implement the results of this Central Florida Water Initiative. Adoption of some rules and regulations are expected to require coordination with the statewide Consumptive Use Permitting Consistency initiative underway by the Department of Environmental Protection (DEP) and the state's five water management districts.

Central Florida Water Initiative Goals

1. One model
2. One uniform definition of harm
3. One reference condition
4. One process for permit reviews
5. One consistent process, where appropriate, to set MFLs and reservations
6. One coordinated regional water supply plan, including any needed recovery and prevention strategies

The process will provide flexibility for cases where Recovery Strategies have been adopted, such as for the Southern Water Use Caution Area in the SWFWMD.

Central Florida Water Initiative Governance

The relational hierarchy for the Central Florida Water Initiative is as follows (see Figure #2 in the Appendix):

Steering Committee

This is the primary oversight committee comprised of a cross section of water supply partners meeting regularly to guide a coordinated effort to fulfill the Guiding Principles and Collaborative Process Goals of the CFWI. The Steering Committee shall provide guidance and direction to the collaborative technical teams and technical oversight/management committees regarding the efforts of each of those groups.

The Steering Committee shall conduct its meetings in accordance with the requirements of Section 286.011, Florida Statutes (the "Sunshine Law"), and will operate by unanimity in its decisions. All meetings of the Steering Committee shall be open to the public at all times. The Steering Committee shall provide reasonable notice of all of its meetings in accordance with the Sunshine Law.

The Steering Committee shall be comprised of the following members:

- Utilities - A public water supply utilities representative
- WMDs - One designated Governing Board Member from each of the WMDs
- FDEP - One designated FDEP representative
- DACS - One designated DACS representative

The findings and recommendations of the Steering Committee will be presented for evaluation, assessment and initiation of rulemaking, as appropriate.

Technical Oversight/Management

This committee level provides regular oversight to technical teams to ensure a coordinated effort and is comprised of representatives of the executive management teams from each of the WMDs, FDEP and public water supply utilities. This oversight function is made up of two separate committees. One committee is for routine technical coordination between the teams. The other committee will only meet on an ad hoc basis as the need arises between meetings of the Steering Committee on issues of management and coordination. The Technical Oversight/Management Committees and technical teams will not operate as "Sunshine" committees, as their functions will be limited to fact finding and technical analysis. They will conduct fact-finding regarding the Guiding Principles and Collaborative Process Goals of the CFWI and provide options for implementation of the Guiding Principles and Collaborative Process Goals of the CFWI. They will not be making policy decisions or prioritizing options. The Technical Oversight/Management Committees and technical teams shall obtain instruction from the Steering Committee regarding any potential policy issues that may arise as a result of their investigations.

Technical Oversight

This is the primary committee that provides the routine technical coordination of the effort so that each technical team is able to fulfill their respective work plan and schedule. The design of the Collaborative process requires close attention to inter-group teamwork since many of the end products of the individual tasks will be utilized across the technical teams. The Process Goal of consistency begins at the fundamental technical level.

This committee consists of two members of each technical team (a WMD and Utility member), one representative from DACS to serve as the agriculture liaison and an FDEP representative who will serve to moderate issues amongst the Technical Oversight Committee:

- Moderator (Janet Llewellyn)
- Hydrologic Analysis (Peter Kwiatkowski, David MacIntyre)
- Environmental Measures (John Zahina, David MacIntyre)
- Minimum Flows and Levels and Reservations (Doug Leeper, Tony Janicki)
- Data, Monitoring, and Investigations (Mary Thomas, Chris Sweazy)
- Regional Water Supply Plan (Tom Bartol, Teresa Remundo Fries)
- Agriculture liaison (Camilo Gaitan)

Management Oversight

This committee will meet when necessary to identify and prepare a summary of consistency and policy issues that have evolved in the technical team efforts, so that such issues may be brought before the Steering Committee at its next scheduled meeting. Consistency issues that have their genesis in laws or rules will need to be clearly identified as such when brought before the Steering Committee. Final resolution of some of these issues may require Governing Board or Legislative resolution.

(WMD Deputy Directors, Utility Representative, FDEP Representative, DACS Representative)

- Len Lindahl, SFWMD
- Woody Boynton, SJRWMD
- Robert Beltran , SWFWMD
- Brian Wheeler, Utilities
- Tom Beck , FDEP
- Ray Scott, DACS

Public Input

A key objective of the Central Florida Water Initiative will be to seek input from other interested parties in a regularly scheduled open forum at each meeting of the Steering Committee.

Technical Collaborative Teams

To build the strong technical foundation necessary to achieve the Guiding Principles, several teams will work together collaboratively refining and developing the ongoing technical work that was started by the CFCA Action Plan and subsequent work efforts. The teams will not operate as “Sunshine” committees, as their functions will be limited to fact finding and technical analysis. They will conduct fact-finding regarding the Guiding Principles and Collaborative Process Goals of the CFWI and provide options for implementation of the Guiding Principles and Collaborative Process Goals of the CFWI. They will not be making policy decisions or recommendations or prioritizing options. The technical teams shall obtain instruction from the Steering Committee regarding any potential policy issues that may arise as a result of their investigations. The technical teams are shown below. The current list of individuals assigned to each team is shown on the CFWI website.

Each Technical Collaborative Team will have a work plan and schedule to accomplish their effort. Each team will be expected to present their progress at each Steering Committee meeting.

1. Hydrologic Analysis

Ensure that the most appropriate science is applied to the modeling and data analysis to support decision making for the CFWI and that the work completed is defensible, understood by the initiative participants and collaboratively developed.

2. Environmental Measures

Perform environmental assessments of wetlands and surface waters, and other related work in support of determining sustainable groundwater withdrawals in the CFWI.

3. Minimum Flows and Levels and Reservations

Evaluate compliance status of existing MFLs and reservations and develop collaborative measures (measuring sticks) to be applied consistently across the CFWI area to evaluate the effect of existing and proposed withdrawal scenarios. Coordinate with other technical teams to complete the initial assessments of groundwater availability in the CFWI.

4. Groundwater Availability

Develop planning level estimates of groundwater availability for consideration by the Steering Committee in addressing CFWI Guiding Principal #1.

5. CFWI Regional Water Supply Plan

Develop a regional water supply plan for the CFWI that ensures the protection of the water resources and related natural systems and identifies sustainable water supply for all water uses in the CFWI through the planning horizon.

6. Solutions Planning

Develop alternatives to meet water demands by optimizing the use of existing groundwater and by identifying viable conservation and other management strategies, viable alternative and non- traditional water supplies, areas that may require recovery or resource protection and areas where regulatory and water resource protection strategy consistency may be needed. The final work product of the SPT will be the findings to the Steering Committee in a “CFWI 2035 Water Resources Protection and Water Supply Strategies” document.

7. Regulatory

Develop options for consistent regulations as well as identify Legislative changes, as needed, to implement the solution strategies identified in the CFWI process, to assist with resource recovery strategies, and to provide for equitable and predictable review of consumptive use permit applications among the districts.

Hydrologic Analysis Team

- Team Leader- David MacIntyre

The Hydrologic Analysis Team is made up of representatives from the three water management districts and technical representatives of the public water supply utilities. The team is charged with developing the necessary modeling tools and data analysis to support the CFWI.

Team Goals

Ensure that the most appropriate science is applied to the modeling and data analysis to support decision making for the CFWI and that the work completed is defensible, understood by the initiative participants and collaboratively developed.

Team Approach

The team will work within a collaborative environment under the guidance and direction of the Steering Committee with open and full information sharing as well as joint responsibility and accountability for completing team assigned work products.

Team Objectives

Provide necessary modeling tools and data analysis and work collaboratively with other Initiative teams to:

- 1) Evaluate the current and future availability of groundwater;
- 2) Assess future water supply and management strategies;
- 3) Develop processes to assess the long-term effectiveness of the management strategies;
- 4) Support collaborative water supply planning;
- 5) Support future regulatory actions.

Team Scope of Work (A)

Modeling and Hydrologic Analysis Support (A)

There are a number of analyses utilized to support the assessment of groundwater availability in the Central Florida region. The principal groundwater modeling tool that will be used is an expansion of the East-Central Florida Transient Model (ECFT). This model extends the western boundary of the ECFT model close to the western boundary of Polk County and is being developed by the United States Geological Survey (USGS) in coordination with the staffs of the three water management districts and utility stakeholders.

A future phase of model development that is expected to begin in 2013 will further extend this boundary to the Gulf of Mexico so that one groundwater model can be used to address groundwater availability within the entire area. The model is a regionally based numerical groundwater flow model that will be used to make predictions of water level and flow conditions within the aquifers. Information developed from the Environmental Measures (EM) and Minimum Flows and Levels (MFLs) and Reservations teams will be incorporated in the model as environmental constraints to assess current and future groundwater availability. Additional hydrologic assessments that are ongoing include two statistical analysis efforts to characterize hydrologic trends and assess factors affecting long-term water level fluctuations in the region.

Key Components Model Calibration (A1)

The USGS model incorporates advanced modeling techniques to simulate recharge, evapotranspiration, and runoff processes and actively simulates lake levels and runoff. The model is being calibrated to observed hydrologic conditions for the period 1995 to 2006 using an iterative, two step approach. The first step is to calibrate the model to steady-state conditions observed in 1999 and 2003 and then to transient conditions observed for the period 1995 to 2006. This process will be repeated until an acceptable calibration is achieved. Calibration is accomplished through use of parameter estimation software (i.e., PEST). After the model has been calibrated, an analysis will be performed to identify the sensitivity of model predictions to the uncertainty that exists in the different model parameters and assumptions.

Statistical Trends in Hydrologic Data (A2)

This is a cooperative effort among the three districts to perform a systematic, regional analysis of long-term groundwater levels, lake levels, spring discharge, and rainfall within central Florida. The first phase of this work was completed in June 2010 and included evaluating statistical trends at 120 individual sites and using cluster analysis to identify correlations between these sites. The second phase of this work is developed to determine factors affecting the clustering of different sites. This includes correlating results of the trend and cluster analyses with supplementary data, such as hydrogeologic setting, land use changes, and water use, to describe the condition of water resources in central Florida. Results of this project will be used along with results of the environmental assessments and other analytical efforts to supplement and corroborate groundwater modeling results.

USGS Project to Quantify Factors Affecting Groundwater and Lake Levels in the Central Florida Area (A3)

This effort is being conducted by the USGS and will use Artificial Neural Networks (ANNs) models and data mining techniques to identify and quantify factors affecting historical groundwater and lake levels. ANNs use advanced statistical modeling methods to assess complex relationships between input and output variables and data mining uses statistical methods to search for valuable knowledge in massive volumes of data. Both techniques are used to evaluate cause and effect relationships. An important component of this project will be to compare water level changes predicted by the ANNs models with the groundwater flow model being developed by the USGS. Hydrologic relationships developed for this project will be used to supplement and corroborate groundwater modeling results.

Initial Model Scenarios (A4)

Following completion of the USGS groundwater model, the HAT will prepare initial water management scenarios to quantify effects of historic and projected levels of groundwater withdrawals. Together with results of the data analyses efforts, these simulations will

provide the framework for assessing impacts of withdrawals on natural systems in the area.

Documentation (A5)

The HAT will prepare documentation of work performed. The document will provide a description of the hydrology and hydrogeology of the area and a historical overview of trends in hydrologic and water use data. The report will also summarize the development of the USGS groundwater model and data analyses that are prepared, and describe the use of the different analyses to assess groundwater availability.

Team Schedule

See CFWI Schedule in the Appendix.

Environmental Measures Team

- Team Leader – John Zahina

The Environmental Measures Team consists of environmental scientists from the three water management districts as well as representatives of the public water supply utilities.

Team Goals

The Environmental Measures Team will perform environmental assessments of wetlands and surface waters, and other related work in support of determining sustainable groundwater withdrawals in the CFWI. The Team will also support options for development of definitions and methodologies for use by all three water management districts for implementing environmental review in water supply planning and consumptive use permitting.

Team Approach

The Environmental Measures Team will meet on a regular basis under the guidance and direction of the Steering Committee to complete its stated objectives and goals and will collaborate with and provide expertise on environmental issues to the Hydrologic Assessment Team, MFLs, Prevention/Recovery Strategies & Reservations Team, and other CFCA teams as appropriate.

Team Objectives

The Environmental Measures Team will:

- 1) Evaluate current environmental condition of wetlands and surface waters in the CFWI, and develop options for quantitative relationships to hydrologic conditions using appropriate scientific methods;
- 2) Apply model output to quantitative assessment relationships developed.

Team Scope of Work (B)

The Environmental Measures Team will examine scientific approaches and assessment techniques to evaluate potential harm to wetlands and surface waters that may result from groundwater pumping. The Environmental Measures Team will coordinate with the Hydrologic Analysis Team, Groundwater Availability Team and Minimum Flows and Levels and Reservations Teams to develop options for defining and identifying harm from hydrologic alterations for use by the three districts within the CFWI.

Evaluate Current Conditions (B1)

The Environmental Measures Team will evaluate the current ecological condition of selected wetlands and surface waters in the CFWI. The districts have conducted field assessments of the environmental condition of approximately 400 wetlands and lakes in the CFWI. This database will be used to identify specific sites for further analysis, relating ecological condition to the site's and the region's hydrology. Other sites will be added to the database as needed based on input from team members. Using a subset of surface water and wetland sites the Environmental Measures Team will develop the options for and apply methods to quantify the link between ecological condition and the historical or estimated record of water levels or flows. Time series will allow for the characterization of the dynamics in the hydrologic regime of a given water body. The analysis and methods development and testing will maximize the use of existing assessment information.

Relate Current Conditions Model (B2)

The hydrologic models will produce a time series of water levels or flows that can be direct inputs into the ecological condition assessment method. The Environmental Measures Team will evaluate the relationship between the hydrologic regime within surface waters and wetlands to the output of hydrologic models. Alternative analytical techniques may be necessary to link projected water levels to future environmental conditions. Working with the HAT, develop options for alternative analytical techniques to be utilized by the Groundwater Availability Team. This relationship will then be utilized by the Groundwater Availability Team for their analyses.

Team Schedule

See CFWI Schedule in the Appendix.

Minimum Flows and Levels and Reservations Team

- Team Leader – Doug Leeper

Team Goals

Evaluate compliance status of existing MFLs and reservations and develop collaborative measures (measuring sticks) to be applied consistently across the CFWI area to evaluate the effect of existing and proposed withdrawal scenarios. Coordinate with other technical teams to complete the initial assessments of groundwater availability in the CFWI.

Team Approach

The MFLs and Reservations Team will participate in a collaborative process with the Hydrologic Analysis, Environmental Measures, Data and Monitoring and Investigations, and Groundwater Availability teams, under the guidance and direction of the Steering Committee, to meet the goals of the CFWI. The approach will be a collaborative sharing of ideas, information, strategies, and responsibilities for achieving the CFWI's Guiding Principles and Goals through frequent and efficient interactions among our team members and other teams.

Team Objectives and Scope of Work

- 1) Review and understand the various approaches used by the WMDs to set MFLs/Reservations (C1);
- 2) Identify commonalities and differences in the approaches that have been used for existing MFLs/Reservations (C2);
- 3) Develop options for consistently evaluating compliance for MFLs in the CFWI area to provide to the MOC for consideration (C3);
- 4) Coordinate with the Regional Water Supply Team and provide a description of the status of adopted MFLs for the CFWI regional water supply plan (C4);
- 5) Evaluate current peer review process of each WMD in order to develop options for a standard procedure to peer review MFLs and Reservations within the CFWI (C5);
- 6) Develop and document "measuring sticks" to evaluate MFLs compliance and other resource considerations in the planning process, using output from ECFT model to assist GAT's determination of groundwater availability in the CFWI area (C6);
- 7) Document the existing processes used by each water management district for developing priority water body lists for MFLs and Reservations (C7); and

- 8) Coordinate with the Solutions Planning Team (SPT) and provide technical support in the form of evaluating MFL responses to “solution scenarios” generated by the SPT in order to assess effects on water bodies with MFLs (C8).

Team Schedule

See CFWI Schedule in the Appendix.

Data Monitoring and Investigations Team

- Team Leader – Mary Thomas

The Data Monitoring and Investigations Team is comprised of representatives from the three water management districts and technical representatives of public water supply utilities. The team is charged with developing an inventory to act as a single reference source for regional monitoring data to support CFWI technical activities and regulatory activities.

Team Goals

The primary goal of this team is to ensure that available hydrologic, environmental, and other pertinent data collected throughout the region is identified, inventoried, and accessible to support the CFWI technical initiatives and CFWI regulatory activities. Using the inventory of existing data collection activities, the team will collaborate with the other technical initiative teams to develop recommendations for future regional monitoring activities.

Team Approach

The team will work under the guidance and direction of the Steering Committee within a collaborative environment, with open and full information sharing, and with joint responsibility and accountability for completing team assigned work products.

Team Objectives

The team’s main objective is to provide a single reference point for available data and investigations. This team will work collaboratively with other Technical Initiative Teams and agencies to:

- 1) Develop and maintain an inventory of available hydrologic, environmental, and other pertinent data and investigations in the region;
- 2) If approved by the Steering Committee, investigate the feasibility of developing a web-based portal that enables users to access available data and investigation reports from the different sources responsible for collecting and producing this information in the CFWI;
- 3) Establish minimum standards for future CFWI data collection, including data collected to meet regulatory requirements;
- 4) Inventory investigations and data collected in support of the other Technical Initiative Teams;
- 5) Identify areas of insufficient or potentially redundant data collection.
- 6) Develop an implementation plan for improvements to the regional monitoring program.

Team Scope of Work (D)

The DMIT will work together to identify, review and organize available regional monitoring data such that a single inventory can be developed to support both the Technical Initiative Teams within the CFWI and future regulatory initiatives.

The DMIT will first collaborate to identify all existing monitoring data. The monitoring data is expected to include, but is not limited to:

- Surficial aquifer system water levels
- Upper Floridan aquifer water levels
- Lower Floridan aquifer water levels
- Lake stage data
- Rainfall data
- Vegetative and soil transect data
- Ecological investigations
- Physiographic data
- Water quality data
- Flow data
- Geological investigations
- Any other data supportive of the other technical initiatives

There currently exists a large amount of monitoring data across the region. However, data is available from numerous data sources and there is no single interface that enables a user to obtain a comprehensive snapshot of information available for any single location. The data is also available in varied formats with inconsistent periods of record. The WMDs, the United States Geological Survey (USGS), and the Florida Department of Environmental Protection (FDEP) are examples of entities that have collected or compiled historical monitoring data, but each entity maintains data in different ways. It is

necessary for all data available in a single location to be identified so that thorough, more effective analyses can be conducted.

Development of a single inventory and eventually an interface will serve the CFWI in a number of ways:

- 1) it will enable other CFWI Technical Initiatives to identify the availability of empirical data in a single location for use in model calibration;
- 2) it will serve as a quality control exercise, identifying opportunities for data collection agencies to modify their practices to develop uniform methods for future monitoring; and
- 3) It will assist regulatory agencies to avoid monitoring redundancy, as can often occur during the permitting process.

Development of a Standard Data Inventory Sheet (D1)

The DMIT will develop an inventory data form so that incoming data and sources can be categorized and sorted. A statistical analysis may also be conducted to determine if the types of data collected correlate with one another, making them redundant.

Each participating agency will be responsible for ensuring all data collected within their respective agencies are captured in the inventory. Non-participating agencies will be polled by the team, so that the list of available regional data is thorough. An initial screening may be conducted to identify areas in which data is absent.

As the other Technical Initiative Teams evolve, the collection of supplemental data to support their studies may occur. The DMIT will support these data collection efforts by retaining an inventory of the data sets in a single location for use by all Technical Initiative Teams.

Inter/intra Agency Investigations of Other Existing Data (D2)

The data collection phase of this initiative will enable the team to understand what data is available and what format it is in. A future phase would result in an interface that links a user to all available data so the user will be able to perform queries on a particular area of the region, and obtain a complete listing of available data in a consistent format. The interface links must be live, as data collection is an ongoing effort.

Further development of the interface will be determined by the Steering Committee. For example, a singular reporting feature that enables the user to print or save all available data from one location to a single file would be ideal. However, this feature is not critical to the intent of the CFWI.

Inventory Development (D3)

Data collection is an ongoing, region wide activity. Not only will data points for a single site or category be ever-expanding, so will the number and location of the individual data points. It may be determined by the Steering Committee or other CFWI Technical Initiatives Teams that specific monitoring data currently unavailable would be critical to validate their models. Should this occur, the DMIT will work closely with the other teams to determine how to initiate such data collection?

Collaboration with Other Technical Initiatives (D4) Expansion of the inventory over time will require a significant level of coordination with the agencies supplying the data. Not only will there need to be constant communication amongst the entities, but it will be desirable to establish a uniform reporting format for all agencies. This level of effort will be discussed and determined collaboratively by the team in partnership with the supplying agencies.

Establish Minimum Standards for Data Collection (D4)

In keeping with the CFWI Guiding Principles, the DMIT intends to initiate the development of minimum standards for data collection. The standards will initially target regulatory data collection conducted by water use permittees, but may expand to water management district resource data collection if requested by the Steering Committee.

Minimum standards for data collection will begin with the use of the Standard Inventory Sheet to formulate a standard data reporting method. The use of this sheet will encourage easier upkeep of the DMIT inventory. Minimum standards for data collection will also need to be established based on the type of data to be reported. Minimum quality control and reliability standards must be set so that all data collected by water use permittees is useful and beneficial.

If requested by the Steering Committee, the data collection standardization will be applied to WMD resource data and could evolve into a regional database.

Develop Recommendations for Regional Monitoring (D5)

The DMIT will collaborate with other CFWI teams to identify areas within the CFWI and recommend areas for additional data collection. There may also be areas identified within the CFWI with adequate or redundant monitoring which result in recommendations for decreased data collection. With the Steering Committee's approval, the DMIT may also develop an implementation plan for these modifications.

Team Schedule

An initial screening of available data has already been conducted by SFWMD agents. This data must be validated, inventoried, and standardized before an expansion can take place. See CFWI Schedule in the Appendix.

Groundwater Availability Team

- Team Leader – Mark Hammond

The Groundwater Availability Team will be comprised of select members of the Hydrologic Analysis, Environmental Measures, and MFLs teams. The work of this Team will begin after sufficient progress has been made by each of the aforementioned Teams with respect to their individual Team's scope of work.

Team Goals

Develop planning level estimates of groundwater availability for consideration by the Steering Committee in addressing CFWI Guiding Principal #1.

Team Approach

The Groundwater Availability Team will work in a collaborative environment with the Hydrologic Analysis, Environmental Measures, MFLs, and RWSP teams and under the overall direction of the Steering Committee.

Team Objectives

The Groundwater Availability team will:

- 1) Develop flowcharts describing the process to achieve the Team Goal;
- 2) Review and understand the products and deliverables from the Hydrologic Analysis, Environmental Measures, and MFLs teams;
- 3) Review and understand the water resource conditions within the CFWI area;
- 4) Provide the Steering Committee with planning level estimates of groundwater availability within the CFWI area under current and future conditions.

Team Scope of Work (E)

Identify evaluation methodologies (E1)

Collaboratively work with the Hydrologic Analysis, Environmental Measures, MFLs, and RWSP teams to review, understand, and identify the evaluation methodologies used to develop planning level estimates of groundwater availability. This includes the "measuring sticks" from the EMT and MFL teams and the model output and analysis from the HAT team.

Groundwater withdrawal impacts (E2)

Collaboratively work with the Hydrologic Analysis, Environmental Measures, MFLs, and RWSP teams and use the identified evaluation methodologies to determine:

- (1) Locations where current/permitted/planned withdrawals and water management activities are less than groundwater availability under current conditions
- (2) Locations where current/permitted/planned withdrawals and water management activities are in approximate balance with groundwater availability under current conditions
- (3) Locations where current/permitted/planned withdrawals appear to exceed groundwater availability under current conditions. For this case, current or permitted withdrawal reductions and other water management activities will be evaluated for reducing, eliminating, or managing areas of impact.

Develop Planning Level Estimates of Groundwater Availability (E3)

Maps of predicted hydrologic changes, statistical results, wetland assessment data, land use changes from historical times to present, and other information will be used to identify the locations where additional groundwater supplies may be accommodated and planning level estimates of the availability.

Team Schedule

See CFWI Schedule in the Appendix.

CFWI Regional Water Supply Plan Team

- Team Leader – Tom Bartol

Team Goal:

Develop a regional water supply plan for the CFWI that ensures the protection of the water resources and related natural systems and identifies sustainable water supply for all water uses in the CFWI through the planning horizon.

Team Approach:

The CFWI Regional Water Supply Team will participate in a collaborative process with the Groundwater Availability, Hydrologic Analysis Tools, Environmental Measures, MFLs and Reservations, and Data and Monitoring Strategy teams, under the guidance of the Steering Group and Management Oversight Committee, to meet the goals of the CFWI. Our approach will be a collaborative sharing of ideas, information, strategies, and responsibilities for achieving the CFWI's Guiding Principles and Goals through frequent and efficient interactions among our team members and other teams.

Team Objectives:

- 1) Develop and assimilate population and water demand projections
- 2) Review, understand and utilize resource protection criteria developed by the CFWI process
- 3) Develop water conservation component for the CFWI
- 4) Evaluate and assess water sources
- 5) Develop water supply development component options
- 6) Develop water resource development component options
- 7) Conduct workshops and public meetings on the Regional Water Supply Plan

Scope of Work (F):

The development of a CFWI Regional Water Supply Plan is dependent on several factors, such as, population and water demand projections, resource evaluation criteria, and water supply development options. Timely input from other technical collaborative teams is critical to ensure the CFWI Regional Water Supply Plan will be completed by the end of 2012.

The scope of work and schedule below takes into account the relation between this effort and those of the technical collaborative teams. An example of which is the availability of the East-Central Florida Transient Groundwater Flow Model being developed by the U.S. Geological Survey. Completion of the model is necessary for predicting changes to water resources due to projected water demands.

Develop and assimilate population and water demand projections (F1)

The CFWI Water Supply Team will utilize a consistent methodology for water demand projections. The population projections shall be performed based on the provisions of Subsection 373.709(2) (a) 1, F.S. The team will need to reach consensus on the methodology for projecting and distributing water demand in the CFWI.

Develop water conservation component for the CFWI (F2)

The CFWI Water Supply Team will utilize a consistent methodology for determining conservation potential in CFWI.

Evaluate and assess water sources provided by Groundwater Availability Team (F3)

Similar to Task F1, this task will require the CFWI Regional Water Supply Team to review water source evaluation methodologies used by the WMDs. The Team will need to reach consensus on the uniform metrics and a set of methods adaptable to specific water body types in various hydro-geologic settings within the CFWI. This will require coordination with the Groundwater Availability, Environmental Measures, Hydrologic Analysis, MFLs and Reservations, and Data Monitoring and Investigations Teams.

The Team will work in coordination with utilize tools developed by other CFWI Teams to assess water resources of the CFWI, such as, the East-Central Florida Transient Groundwater Flow Model (developed by the U.S. Geological Survey). This Task is highly dependent on the availability of tools.

Develop water supply development component options (F4)

The CFWI Water Supply Team will identify water supply development options, and reach consensus on a consistent methodology for water supply component project description, yield, cost estimates, source, water resource constraints (MFLs), supply entity (ies), feasibility and permissibility, funding analysis, and public interest. This will ensure the Plan complies with Subsection 373.709(2) (a) 3, F.S.

Develop water resource development component options (F5)

The CFWI Water Supply Team will identify water resource development options, and reach consensus on a consistent methodology for water resource development component project descriptions, water made available, and cost estimates. This will ensure the Plan complies with Subsection 373.709(2) (b), F.S.

Conduct public workshops and meetings on the Regional Water Supply Plan (F6)

The CFWI Water Supply Team will conduct public workshops and meetings to review methods used to develop the Regional Water Supply Plan, present the draft Plan and solicit public input on the Plan. The CFWI Water Supply Team will provide comments and recommendation to the CFWI Steering Committee.

Produce Draft Regional Water Supply Plan (F7)

The CFWI Water Supply Team will compile and produce a draft of the Regional Water Supply for review for the CFWI Steering Committee.

Team Schedule – See CFWI Schedule in Appendix.

Solutions Planning Team

- Team Leader – Robert Beltran

The Central Florida Water Initiative's (CFWI) primary focus is to provide for more effective, water resource planning, development and management procedures. The Solutions Planning Team (SPT) will build upon the results of the CFWI planning process and address future steps toward meeting the water supply needs of the region. The work of the SPT will begin after sufficient progress has been made by the RWSP Team in November 2013.

Team Goal

Background- After careful evaluation by the CFWI technical teams, it has been determined that for solutions team's planning purposes the sustainable quantities of traditional groundwater sources available for water supply that can be used without causing unacceptable harm to the water resources and associated natural systems is 850 MGD. An additional 75 MGD of groundwater may be available but environmental constraints and economic realities, along with regionally appropriate management and operational controls including additional local mitigation, will need to be carefully considered by the SPT. Therefore, alternative and non-traditional sources of water will need to be developed to meet a portion of the total projected regional water supply demands.

Goal- The CFWI SPT will develop alternatives to meet water demands by optimizing the use of existing groundwater and by identifying viable conservation and other management strategies, viable alternative and non- traditional water supplies, areas that may require recovery or resource protection and areas where regulatory and water resource protection strategy consistency may be needed. The final work product of the SPT will be the findings to the Steering Committee in a "CFWI 2035 Water Resources Protection and Water Supply Strategies" document.

Team Approach

The SPT is composed of senior management staff from the Florida Department of Environmental Protection (FDEP), Florida Department of Agriculture and Consumer Services (FDACS), and the South, Southwest, and St. Johns River water management districts (WMDs), together with public water supply utilities, agricultural land owners, environmental groups, regional leaders and business representatives. The SPT will work under the guidance of the Steering Committee (SC) and Management Oversight Committee (MOC) to fulfill the Guiding Principles of the CFWI. The SPT's approach will be a collaborative sharing of ideas, information, alternatives, and responsibilities.

Team Objectives

The Solutions Planning Team will:

1. Understand the products and deliverables from the Regional Water Supply Plan (RWSP), created through a collaborative effort with the Groundwater Availability, Environmental Measures, Hydrologic Analysis, MFLs and Reservations, and Data Monitoring and Investigations teams.
2. Present practical and cost-effective regional water supply projects and conservation measures identified by the RWSP Team and SPT sub teams
3. Identify alternatives for developing available groundwater from 850 MGD to an amount up to 925 MGD (with appropriate regional management and operational controls).
4. Identify regional water supply projects including cost-benefit analysis of yield , cost estimates, sources, water resource constraints, potential partnerships, additional pumping and transmission configurations, feasibility and permittability, and funding options. These projects should be regional, multi-jurisdictional solutions that serve more than one utility.
5. When appropriate, create Water Resource Development Sub-teams to refine specific regional projects or CFWI Alternative Water Supply (AWS) alternatives. CFWI AWS elements may include reuse of reclaimed water, conservation and other management strategies, surface or groundwater source assessment or any other regionally related component. This effort shall be coordinated with members of the Groundwater Availability, Environmental Measures, Hydrologic Analysis, MFLs and Reservations, and Data Monitoring, Investigations teams and other appropriate district activities.
6. Identify regional water supply project limitations or constraints resulting from the inconsistency of the rules of the three Districts in the CFWI area and report them to the MOC
7. Coordinate with the RWSP Team and appropriate stakeholders to develop future steps toward achieving sustainable, long-term, water supply alternatives.
8. Present the CFWI 2035 Water Resources Protection and Water Supply Strategies to other key stakeholders.
9. Present the CFWI 2035 Water Resources Protection and Water Supply Strategies to the three WMDs, FDEP and the FDACS for their consideration to amend the CFWI regional supply plan

Scope of Work (G)

The SPT will work to further the planning results of the CFWI Regional Water Supply Planning process to address the future water supply needs of the region. The region's population is expected to increase from 2.6 million in 2010 to 3.9 million by 2035 and the total water demand is projected to increase from 772 MGD in 2010 to 1,083 MGD by 2035.

The SPT will oversee the preparation of the CFWI 2035 Water Resources Protection and Water Supply Strategies document which will be incorporated by amendment into the CFWI RWSP. The RWSP should clearly define how the future demands could be met in the CFWI while protecting the environment. The amended regional water supply plan will provide relevant project information to further develop specific water supply projects through partnerships with water users including the necessary financing, cost estimates, potential sources, feasibility and permissibility, identification of governance structure options, and any potential recovery needs. Several Water Resource Development and Planning Sub-teams will be created to assist with technical aspects of document implementation, support partnerships, identify conjunctive use opportunities and maximize efficiencies.

G1: Develop a plan to achieve the SPT Goal and Objectives

The SPT will develop time schedules and flowcharts describing the process to achieve the SPT Goal and Objectives.

G2: Develop a strategy document

The SPT will develop the CFWI 2035 Water Resources Protection and Water Supply Strategies document. As part of the document development, the SPT will conduct the following subtasks:

- a. Review regional alternatives identified in the RWSP
- b. Identify largest water supply deficits and consider the timing of the needs
- c. Develop potential water supply and conservation project options from CFWI RWSP or other projects developed by sub teams
- d. Identify potential partnerships to encourage regional interconnects and maximize economies of scale and efficiencies
- e. Identify potential need for recovery and prevention in coordination with other district activities
- f. Develop a Comprehensive Water Resource Monitoring and Assessment Program in conjunction with the Data Monitoring and Investigation Team
- g. Assist in conducting workshops and public meetings to support the CFWI 2035 Water Resources Protection and Water Supply Strategies Plan
- h. Identify funding needs and potential sources for large regional projects

G3: Establish technical sub-teams

The SPT will establish and oversee several Water Resource Development and Planning Sub-teams to assist with all technical aspects of the CFWI 2035 Water Resources

Protection and Water Supply Strategies document implementation. The teams will be grouped by water sources or specific project needs;

- a. Surface Water (Dispersed storage and Reservoirs)
- b. Groundwater
- c. Reclaimed Water
- d. Conservation and Other Management Strategies (Agriculture and Urban Landscape)
- e. Recovery/Prevention Projects (Coordinated with other teams as needed)
- f. Other (Stormwater, etc...)

G4: Identify rule inconsistencies

The SPT will identify water supply project limitations resulting from the inconsistency of the varying rules of the three Districts in the CFWI area and report them to the MOC.

Schedule

- June 2013 - Formation of SPT
- July 2013 – Confirmation of SPT
- July – Dec 2013 – Review of RWSP
- Aug – Oct 2013 – SOW Development
- Oct 2013 – Confirmation of SOW
- Oct 2013 – Creation of Sub-team Leaders
- Nov 2013 – SPT Work Begins
- Future milestones based on further refinement of SOW

Regulatory Team

Team Leader: Lennart Lindahl

The Central Florida Water Initiative's (CFWI) primary focus is to provide for more effective water resource planning, development and management procedures. The Regulatory Team will build upon the results of the CFWI technical analysis and planning process as well as perform additional analysis as detailed below.

Background: After careful evaluation by the CFWI technical teams, it has been determined that the sustainable quantities of traditional groundwater sources available for water supply that can be used without causing unacceptable harm to the water resources and associated natural systems is 850 MGD. An additional 75 MGD of groundwater may be available through regional management activities but environmental constraints and economic realities, along with regionally appropriate management and operational controls including additional local mitigation, will need to be carefully considered. There is a need to ensure that appropriate management activities (regulatory and non-regulatory) reflect a balanced approach between public interest considerations, permitted water user rights and sustainability of the water

resources. In addition, the three water management district regulatory programs are not currently aligned to address the CFWI's unique water resource challenges. The Regulatory Team will address these issues by identifying options for consideration.

Goal: Guiding Principle three for the CFWI is to "establish consistent rules and regulations for the three water management district that meet the Collaborative Process Goals and implement the results of this Central Florida Water Initiative".

Team Approach:

The Regulatory Team is comprised of regulatory staff from the South, Southwest, and St. John's Water Management Districts (WMDs); a Florida Department of Environmental Protection (FDEP) representative, a Florida Department of Agriculture and Consumer Services (FDACS) representative; and public water supply utility and environmental group representatives. The Regulatory Team will work under the guidance of the Steering Committee (SC) and Management Oversight Committee (MOC) to fulfill the Guiding Principles of the CFWI. The Regulatory Team will interact with the other CFWI technical teams to evaluate regulatory options identified for ensuring sustainable water supplies. The Regulatory Team's approach will be a collaborative sharing of ideas, information, alternatives, and responsibilities.

Team Objectives:

The Regulatory Team will develop options for consistent regulations as well as identify Legislative changes, as needed, to implement the solution strategies identified in the CFWI process, to assist with resource recovery strategies, and to provide for equitable and predictable review of consumptive use permit applications among the districts.

Team Scope of Work (H):

H1- Report consumptive use program data

The WMDs will generate monthly WMD reports of consumptive use program data such as: pending applications, 10 year compliance reports, and anticipated renewal applications.

H2- Regulatory and statutory options

Understand the products and deliverables from the Regional Water Supply Plan (RWSP). Identify options to solve regulatory impediments to implementing Team(s) recommendations, including options for regulatory or statutory changes as needed.

H3- Develop sustainability, demands, and strategy options

Develop options for a consistent regulatory definition of sustainable water withdrawals and reasonable-beneficial demands in the CFWI region and associated implementation strategies.

H4- Review management activities

Review management activities associated with permitted uses to maximize yield and minimize environmental impacts to maximize use of traditional supplies.

H5- Regulatory alignment options

Identify options for alignment of regulatory programs to employ appropriate implementation strategies and management activities identified above.

H6- Regulatory alignment options

Identify a process to analyze implementation of CFWI strategies and provide for on-going consistency in implementation by the districts.

H7- Report findings

Present findings of the above evaluations to the Management Oversight Committee and Steering Committee.

H8- Reasonable-beneficial demands options

In coordination with the Regulatory Team's strategies and Solutions Planning Team's recommended projects, develop options, as needed, to better align permitted quantities with reasonable-beneficial demands over the term of the permit, consistent with State Water Policy concerning water conservation.

Team Schedule - TBD

APPENDICES

CFWI Schedule

(components shaded have been completed)

| Technical Collaborative Team | Key Components | Start | End |
|--|---|------------|------------|
| Hydrologic Analysis Team ----- Modeling and Tools Support (A) | Key Components Model Calibration (A1) | | 9/30/11 |
| | Technology Transfer Protocol (A1B) | 11/10/11 | 12/30/11 |
| | Statistical Trends in Hydrologic Data (A2) | | 2/28/12 |
| | USGS Project to Quantify Factors Affecting Groundwater and Lake Levels in the Central Florida Area (A3) | | 10/31/12 |
| | Initial Model Scenarios (A4) | | 1/31/13 |
| | Documentation (A5) | | 3/29/13 |
| Environmental Measures Team ----- (B) | Evaluate current conditions (B1) | | 3/31/12 |
| | Relate current conditions to output of hydrologic model (B2) | | 2/28/2013 |
| Minimum Flows and Levels and Reservations Team ----- (C) | Review and understand the various approaches used by the WMDs to set MFLs/Reservations (C1) | 6/22/2011 | 9/30/2011 |
| | Identify commonalities and differences in the approaches that have been used for existing MFLs/Reservations (C2) | 6/22/2011 | 11/30/2011 |
| | Develop options for consistently evaluating compliance for MFLs in the CFWI area to provide to the MOC for consideration (C3) | 12/12/2012 | 12/31/2013 |
| | Coordinate with the Regional Water Supply Team and provide a description of the status of adopted MFLs for the CFWI regional water supply plan (C4) | 1/30/2013 | 8/1/2013 |
| | Evaluate current peer review process of each WMD in order to develop options for a standard procedure to peer review MFLs and Reservations within the CFWI (C5) | 6/22/2011 | 1/31/2012 |
| | Develop and document "measuring sticks" to evaluate MFLs compliance and other resource considerations in the planning process, using output from ECFT model to assist GAT's determination of groundwater availability in the CFWI area (C6) | 1/12/2012 | 8/1/2013 |
| | Document the existing processes used by each water management district for developing priority water body lists for MFLs and Reservations (C7) | 12/19/2012 | 9/30/2013 |

| | | | |
|--|--|-----|-----|
| | Coordinate with the Solutions Planning Team (SPT) and provide technical support in the form of evaluating MFL responses to “solution scenarios” generated by the SPT in order to assess effects on water bodies with MFLs (C8) | TBD | TBD |
|--|--|-----|-----|

| | | | |
|--|--|------------|------------|
| Data Monitoring & Investigations Team ----- (D) | Standard data inventory sheet (D1) | | 8/31/2011 |
| | Intra-and inter-agency investigation of other existing data (D2) | | 10/31/2011 |
| | Inventory Development (D3) | | 1/31/2012 |
| | Establish Minimum Standards for Data Collection (D4) | | 12/31/2013 |
| | Develop Recommendations for Regional Monitoring (D5) | | 3/1/2014 |
| Groundwater Availability Team ----- (E) | Identify evaluation methodologies (E1) | 1/1/2012 | 5/31/2013 |
| | Groundwater Withdrawal Impacts (E2) | 5/18/2012 | 5/31/2013 |
| | Estimate of Groundwater Availability (E3) | 5/18/2012 | 5/31/2013 |
| CFWI Regional Water Supply Plan Team ----- (F) | Develop and assimilate population and water demand projections (F1) | 12/19/2011 | 9/29/2012 |
| | Develop water conservation component for the CFWI (F2) | 12/19/2011 | 9/29/2012 |
| | Evaluate and assess water sources by Groundwater availability team (F3) | 7/2/2012 | 5/31/2013 |
| | Develop water supply development component options (F4) | 2/1/2012 | 12/31/2012 |
| | Develop water resource development component options (F5) | 2/1/2012 | 4/30/2013 |
| | Conduct public workshops and meetings on the Regional Water Supply Plan (F6) | 3/30/2012 | 12/31/2014 |
| | Produce Draft Regional Water Supply Plan (F7) | 2/1/2012 | 4/30/2014 |
| Solutions Planning Team ----- (G) | Develop a plan to achieve the SPT Goal and Objectives (G1) | 8/1/2013 | 10/25/13 |
| | Develop a strategy document (G2) | 8/1/2013 | 12/31/2014 |
| | Establish technical sub-teams (G3) | 8/1/2013 | 12/31/2013 |
| | Identify rule inconsistencies (G4) | 1/1/2014 | 12/31/2014 |
| Regulatory Team ----- (H) | Report consumptive use program data (H1) | | |
| | Regulatory and statutory options (H2) | | |
| | Develop sustainability, demands, and strategy options (H3) | | |
| | Review management activities (H4) | | |

| | | | |
|--|--|--|--|
| | Regulatory alignment options (H5) | | |
| | Implementation consistency (H6) | | |
| | Report findings (H7) | | |
| | Reasonable-beneficial demands options (H8) | | |

Figure 1- County, WMD and SWUCA Boundaries

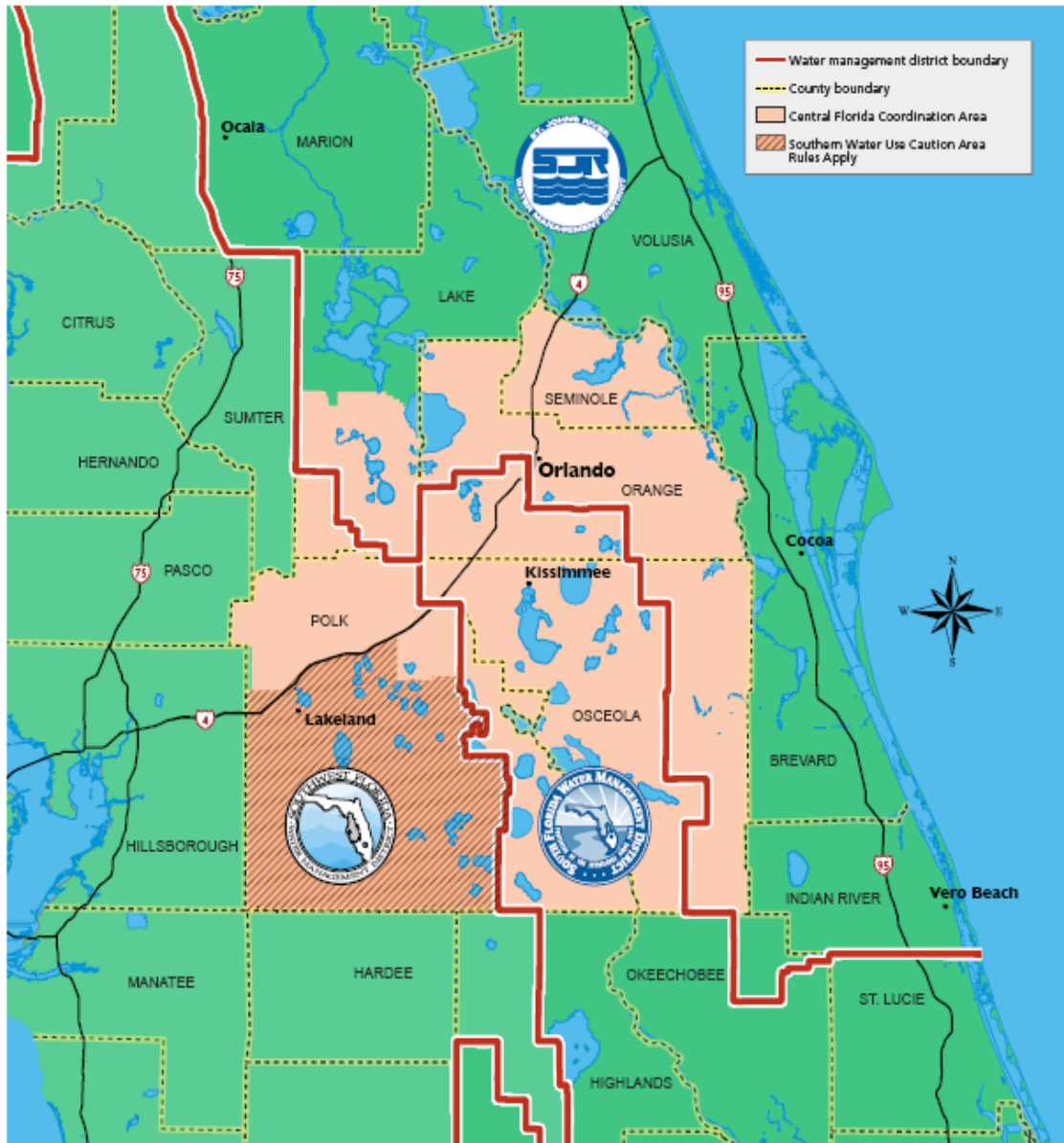
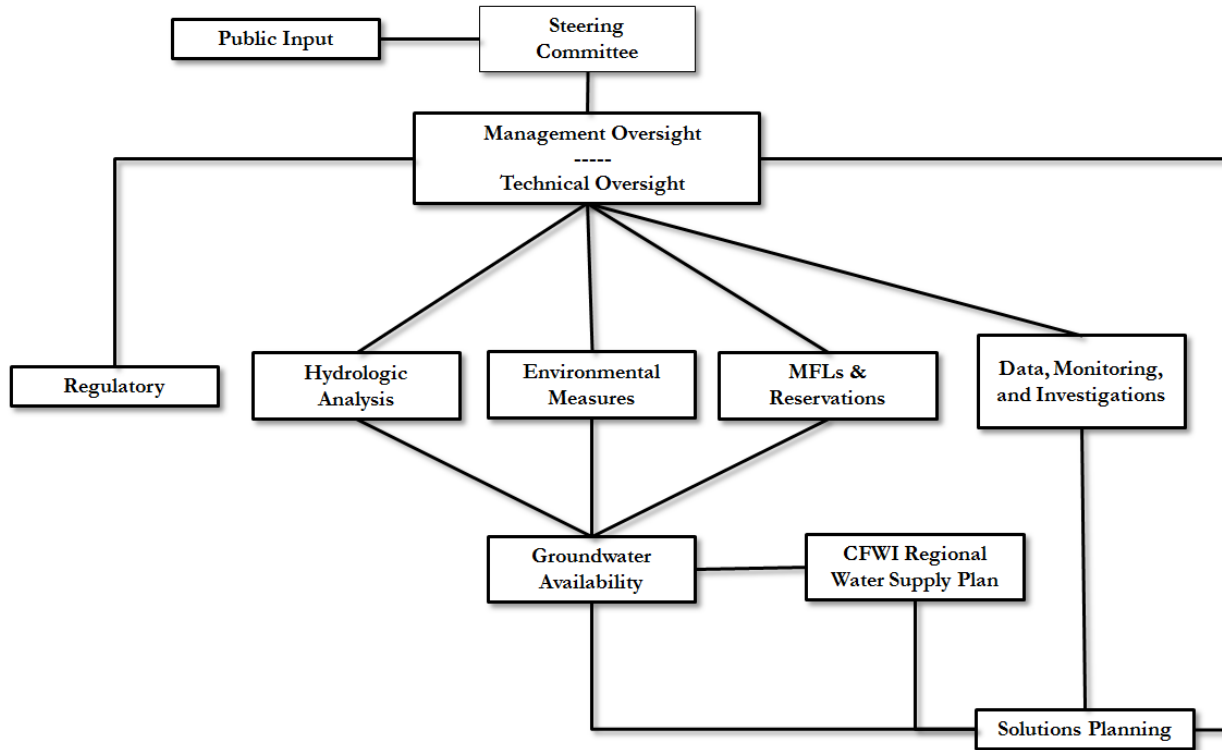


Figure 2- Central Florida Water Initiative Organization



Groundwater Availability will follow work conducted by the Hydrologic Analysis, Environmental Measures, and MFLs & Reservations Technical Teams

CFWI Regional Water Supply Plan will follow completion of the Groundwater Availability team and include: water supply planning, regulatory, mitigation/ augmentation projects, and development of Alternative Water Supplies (AWS), long-term monitoring, funding, and others

Solutions Planning Team will follow the completion of the DRAFT Regional Water Supply Plan and include a broader cross section of community stakeholders and interest groups in addition to the Water Management Districts and FDEP. The Team will oversee the preparation of the CFWI 2035 Water Resources Protection and Water Supply Strategies document which will be incorporated by amendment into the CFWI RWSP

Regulatory Team- Develop options for consistent regulations as well as identify Legislative changes, as needed, to implement the solution strategies identified in the CFWI process, to assist with resource recovery strategies, and to provide for equitable and predictable review of consumptive use permit applications among the districts.

CFWI Steering Committee

This is the primary oversight Committee comprised of a cross section of water supply partners meeting regularly to guide a coordinated effort to fulfill the Guiding Principles and Collaborative Process Goals of the CFWI.

| Utility | Representative |
|---|---|
| TOHO Water Authority | Brian Wheeler bwheeler@tohowater.com |
| Water Management Districts | |
| SFWMD | Dan O'Keefe Dokeefe@shutts.com |
| SWFWMD | Carlos Beruff carlosb@medallionhome.com |
| SJRMWD | John Miklos john@btc-inc.com |
| Deputy Secretary, Water Policy and Ecosystem Restoration | |
| FDEP | Drew Bartlett Drew.Bartlett@dep.state.fl.us |
| Director, Office of Agricultural Water Policy | |
| DACS | Rich Budell Rich.Budell@freshfromflorida.com |

OPERATIONAL PROCEDURES
CENTRAL FLORIDA WATER INITIATIVE
STEERING COMMITTEE

I. COMPOSITION

The composition of the Central Florida Water Initiative (CFWI) Steering Committee (SC) is described in the Central Florida Water Initiative Guiding Document to which this document is attached as an appendix. A member of the SC may provide one alternate for his or her seat on the SC upon written notice to the SC.

II. COORDINATION

- A. A Coordinator shall be selected from among the SC members by unanimous vote of the SC.
- B. The Coordinator is the presiding officer at meetings of the SC, and is to execute all documents authorized by the SC that may require his or her signature.
- C. The Coordinator may designate a SC member to serve as the meeting Moderator.

III. MEETINGS

- A. All meetings of the SC are subject to the Florida Sunshine Law. The public shall be allowed to comment on matters coming before the SC at appropriate times as determined by the Coordinator. The SC reserves the right to limit the public comment time to a specific length of time and to require speakers to fill out speaker cards. All meeting sites shall meet accessibility standards for public meetings.
- B. The SC shall meet at least quarterly or more frequently at the call of the Coordinator.
- C. An agenda for the meeting shall be prepared by the Coordinator or his or her designee and made available to the public in a manner consistent with the requirements of the Sunshine Law.
- D. The SC shall publish notice of its meetings in the Florida Administrative Weekly in a manner consistent with the requirements of the Sunshine Law. The contents of the notice shall conform to the template attached to these procedures.

IV. ACTIONS

Actions of the SC are to be recorded by the Coordinator in meeting minutes.

V. INSPECTION AND COPYING OF PUBLIC RECORDS

The inspection and copying of the SC public records will be in accordance with the Florida Public Records Law. CFWI and SC records shall be maintained and available for public inspection and copying at the offices of the Florida Department of Environmental Protection, 3900 Commonwealth Blvd, MS 23 Tallahassee, Florida 32399.

VI. AMENDMENT

These operational procedures may be amended at any time at a meeting by a unanimous vote of the SC members.

NOTICE TEMPLATE

The Central Florida Water Initiative (CFWI) Steering Committee consisting of a Governing Board member from each of the South Florida Water Management District, the Southwest Florida Water Management District, and the St. Johns River Water Management District, and a representative from each of the Florida Department of Environmental Protection, the Florida Department of Agricultural and Consumer Services and the Tohopekaliga (Toho) Water Authority, representing public water supply utilities within the Central Florida Coordination Area, announces a public meeting to which all persons are invited.

DATE AND TIME:

PLACE:

GENERAL SUBJECT MATTER TO BE CONSIDERED: The CFWI Steering Committee is a collaborative effort among government agencies formed to address water resource issues in the area known as the Central Florida Coordination Area. The CFWI Steering Committee will consider matters appearing on the agenda for the meeting or matters added to the agenda as determined by the Chairman of the Committee. Additional information about this effort may be found at: cfwiwater.com.

A copy of the agenda may be obtained by contacting: _____, or at <http://cfwiwater.com/> seven days prior to the meeting.

Pursuant to the provisions of the Americans with Disabilities Act, any person requiring special accommodations to participate in this workshop/meeting is asked to advise the agency at least 5 hours before the workshop/meeting by contacting: South Florida Water Management District Clerk, (800) 432-2045, ext. 2087 or (561) 682-2087. If you are hearing or speech impaired, please contact the agency using the Florida Relay Service, 1(800)955-8771 (TDD) or 1(800)955-8770 (Voice).

For more information, you may contact: _____, St. Johns River Water Management District, P.O. Box 1429, Palatka, Florida 32178-1429, 386/329- _____, _____@sjrwmd.com;

_____, Southwest Florida Water Management District, 2379 Broad Street, Brooksville, Florida 34604-6899, 352/796 _____, _____@swfwmd.state.fl.us;

_____, South Florida Water Management District, 3301 Gun Club Road, West Palm Beach, Florida 33406, 561/682-_____, _____@sfwmd.gov; John Shearer: Shearer Consulting Inc., 1917 Wingfield Drive, Longwood, Florida 32779, 321/297-7372, johnshearer@cfl.rr.com